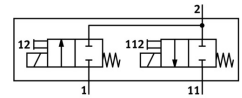
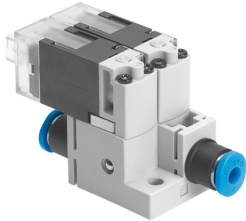



Vacuum valve

MHA1-2X2/2G-1,5-3-3-3

Part number: 562051

FESTO



 General operating condition

Data sheet

Feature	Value
Valve function	2x2/2-way, monostable, closed
Type of actuation	Electric
Construction width	20 mm
Standard nominal flow rate	30 l/min
pneumatic working port	QS-3
Operating voltage	24V DC
Operating pressure	0 bar ... 1.5 bar
Type of reset	Mechanical spring
Degree of protection	IP40
CE mark (see declaration of conformity)	To EU EMC Directive In accordance with EU RoHS Directive
CE marking (see declaration of conformity)	To UK instructions for EMC To UK RoHS instructions
Nominal size	1.5 mm
Grid dimension	20 mm
Exhaust-air function	Without flow control option
Sealing principle	Soft
Mounting position	optional
Manual override	Non-detenting
Type of piloting	Direct
Flow direction	Non-reversible
Symbol	00992254
Signal status display	LED
Operating pressure, reversible	-0.95 bar ... 0 bar
Suitability for vacuum	yes
Standard flow rate	30 l/min
Max. switching frequency	10 Hz
Switching time off	6 ms
Switching time on	6 ms
Duty cycle	100%
Characteristic coil data	24 V DC: low-current phase 0.7 W, high-current phase 3.0 W
Permissible voltage fluctuations	+/- 10 %
Operating medium	Compressed air to ISO 8573-1:2010 [7:4:4]
Note on operating and pilot medium	Lubricated operation possible (in which case lubricated operation will always be required)
Vibration resistance	Transport application test with severity level 2 to FN 942017-4 and EN 60068-2-6

Feature	Value
Shock resistance	Shock test with severity level 2 to FN 942017-5 and EN 60068-2-27
Corrosion resistance class CRC	2 - Moderate corrosion stress
LABS (PWIS) conformity	VDMA24364-B2-L
Storage temperature	-20 °C ... 60 °C
Media temperature	-5 °C ... 50 °C
Ambient temperature	-5 °C ... 50 °C
Product weight	30.6 g
Max. cable length	30 m
Electrical connection	Plug KMH
Type of mounting	With through-hole
Pneumatic connection, port 1	QS-3
Pneumatic connection, port 11	QS-3
Pneumatic connection, port 2	QS-3
Note on materials	RoHS-compliant
Material seals	FPM HNBR NBR
Material housing	PA-reinforced PPS reinforced
Material screws	Steel