



**The Timken Company**

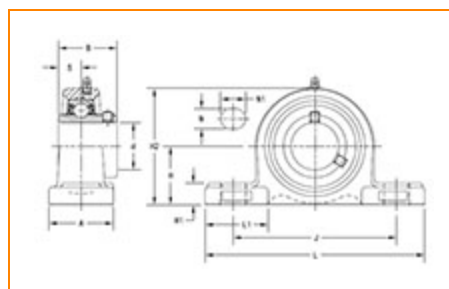
4500 Mt Pleasant St. NW

N. Canton, OH 44720

**Phone:** (234) 262-3000

**E-Mail:** [CustomerCAD@timken.com](mailto:CustomerCAD@timken.com) • **Web site:** [www.timken.com](http://www.timken.com)

## Part Number UCP317, UCP 300 Pillow Block Mounted Bearings - Set Screw Locking



[Specifications](#) | [Dimensions](#) | [Basic Load Ratings](#)

### Specifications

<b>Bearing Number</b>	UC317
<b>Shaft Size d</b>	85 mm
<b>Locking Style</b>	Set Screw Locking
<b>Housing Construction</b>	Two-Bolt Pillow Block

### Dimensions

<b>Base to Center Height H</b>	112 mm 4.409 in
<b>Total Length L</b>	420 mm 16.535 in
<b>Housing Width A</b>	110 mm 4.331 in
<b>Bolt Hole Spacing J</b>	320 mm 12.598 in



<b>Bolt Hole Size N</b>	33 mm 1.299 in
<b>Bolt Hole Length N1</b>	45 mm 1.772 in
<b>Foot Height H1</b>	40 mm
<b>Total Height H2</b>	220 mm 8.661 in
<b>Dimension L1</b>	120 mm 4.724 in
<b>Inner Ring Width B</b>	96 mm 3.780 in
<b>Center of Bearing from End S</b>	40 mm 1.575 in

### Basic Load Ratings

<b>Static Load Rating</b>	96800 N 21762 lbf
<b>Dynamic Load Rating</b>	133000 N 29900 lbf

