



The Timken Company

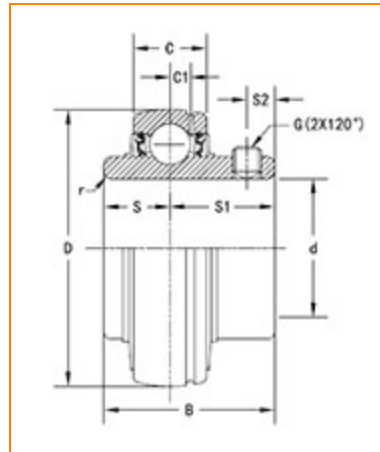
4500 Mt Pleasant St. NW

N. Canton, OH 44720

Phone: (234) 262-3000

E-Mail: CustomerCAD@timken.com • **Web site:** www.timken.com

Part Number UC321, UC 300 Wide Inner Ring Ball Bearings - Set Screw Locking



[Specifications](#) | [Dimensions](#) | [Basic Load Ratings](#)

Specifications

Bore Type	Cylindrical bore
Bearing Type	Ball Bearing
Shaft Size d	105 mm
Material	Bearing Steel
Locking Device	Set Screw Locking

Dimensions

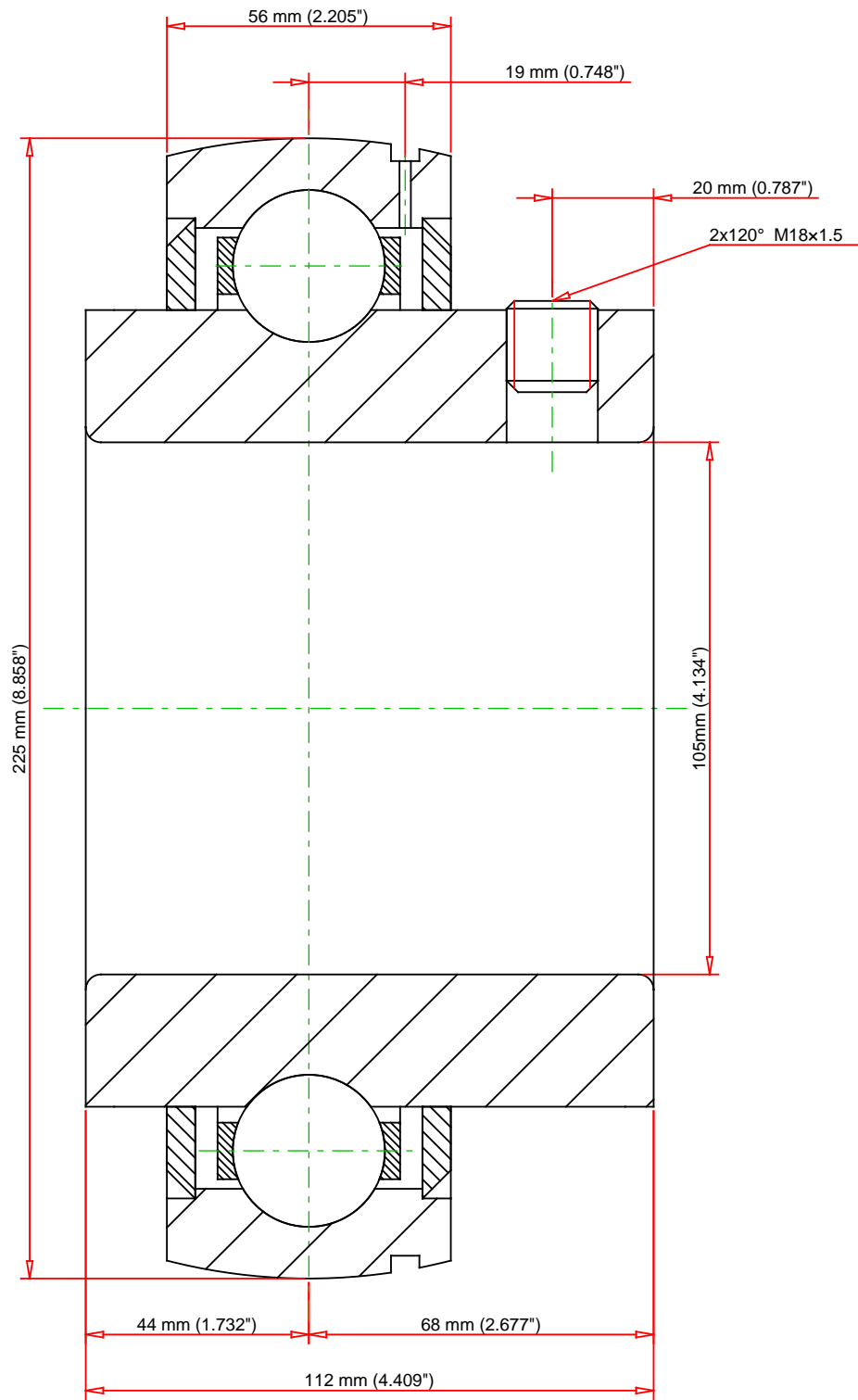
Outside Diameter D	225 mm
Outside Ring Width C	56 mm
Radius r	3 mm
Groove Position C1	19 mm



Center of Bearing from End S	44 mm
Dimension S1	68 mm
Set Screw Distance S2	20 mm
Set Screw Size	M18×1.5
Number of Set Screws	2
Angle between Set Screws	120 °

Basic Load Ratings

Static Load Rating	153000 N
Dynamic Load Rating	184000 N



Weight	12.7 lb	5.8 kg	<div>TIMKEN®</div> <div>THE TIMKEN COMPANY NORTH CANTON, OHIO USA</div>	<div>UC321</div> <div>UC 300 Wide Inner Ring Ball Bearings - Set Screw Locking</div>		
				<div>Basic Load Ratings - C_r</div> <div>41365 lbf184000 N</div> <div>Load Ratings - C_{0r}</div> <div>34396 lbf153000 N</div>		
Every reasonable effort has been made to ensure the accuracy of the information contained in this writing, but no liability is accepted for errors, omissions or for any other reason.				FOR DISCUSSION ONLY		