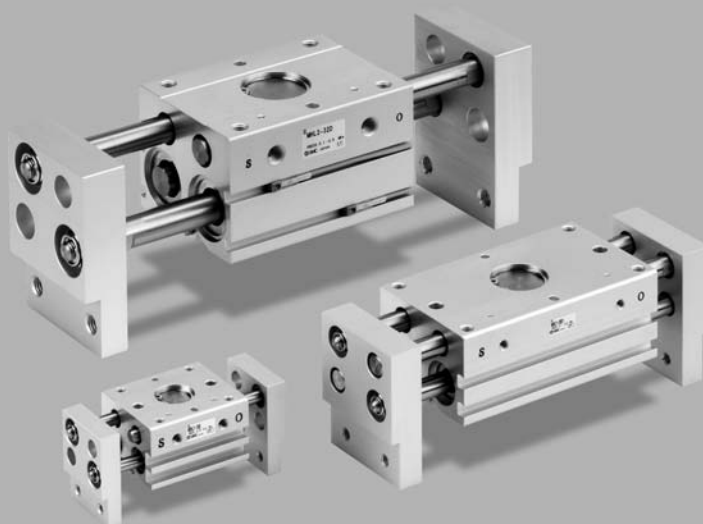


Parallel Style Air Gripper: Wide Type

Series MHL2

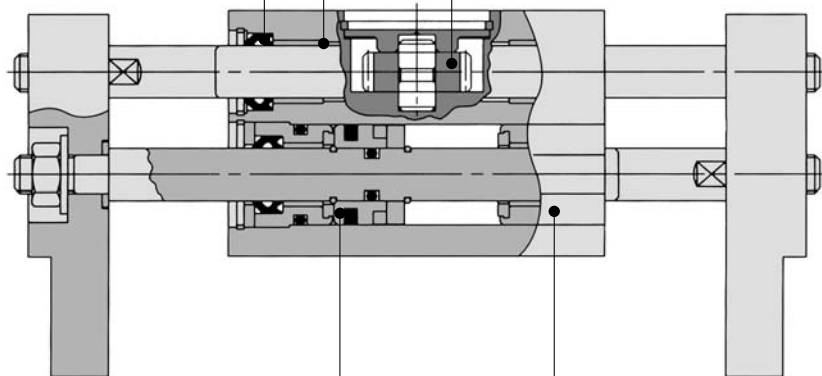


Built-in dust-protection mechanism

A scraper with a dust lip is adopted for all rod rotating parts.

Double-end type oil-impregnated resin bearings with a metal backing are used for all shafts.

Fingers synchronized by a rack and pinion mechanism.



A large amount of gripping force is provided through the use of a double piston mechanism, while maintaining a compact design.

Smaller auto switch mountable

An auto switch can be mounted at 4 locations.

Stroke Variation

Model	Bore size mm			
	10	16	20	25
MHL2-□D	20	30	40	50
MHL2-□D1	40	60	80	100
MHL2-□D2	60	80	100	120

* Values of opening/closing strokes (mm)



MHZ

MHF

MHL

MHR

MHK

MHS

MHC

MHT

MHY

MHW

-X□

MRHQ

MA

D-□

Parallel Style Air Gripper: Wide Type

Series MHL2

ø10, ø16, ø20, ø25, ø32, ø40

How to Order

MHL 2-16 D -M9BW

Wide opening

Number of fingers

2	2 fingers
---	-----------

Bore size

10	10mm
16	16mm
20	20mm
25	25mm
32	32mm
40	40mm

Thread type

Symbol	Type	Cylinder bore
Nil	M thread	ø10 to 25
	Rc	ø32 to ø40
TN	NPT	
TF	G	

Action

D	Double acting
---	---------------

Made to Order
Refer to page 475 for details.

Number of auto switches

Nil	2 pcs.
S	1 pc.
n	"n" pcs.

Auto switch

Nil	Without auto switch (Built-in magnet)
-----	---------------------------------------

* For the applicable auto switch model, refer to the table below.

Opening/Closing stroke (mm)

Symbol	ø10	ø16	ø20	ø25	ø32	ø40
Nil	20	30	40	50	70	100
1	40	60	80	100	120	160
2	60	80	100	120	160	200

Applicable Auto Switch/Refer to pages 761 to 809 for further information on the auto switches.

Type	Special function	Electrical entry	Indicator light	Wiring (Output)	Load voltage			Auto switch model		Lead wire length (m) *				Pre-wired connector	Applicable load	
								Electrical entry direction		0.5 (Nil)	1 (M)	3 (L)	5 (Z)			
					DC	AC	Perpendicular	In-line								
Solid state switch	—	Grommet	Yes	3-wire (NPN)	5V,12V	—	M9NV	M9N	●	●	●	○	○	IC circuit	Relay, PLC	
				3-wire (PNP)			M9PV	M9P	●	●	●	○	○			
	2-wire			12V	M9BV		M9B	●	●	●	○	○	—			
	3-wire (NPN)			5V,12V	M9NWV		M9NW	●	●	●	○	○	IC circuit			
	3-wire (PNP)				M9PWV		M9PW	●	●	●	○	○				
	2-wire			12V	M9BWV		M9BW	●	●	●	○	○	—			
	3-wire (NPN)			5V,12V	M9NAV		M9NA	○	○	●	○	○	IC circuit			
	3-wire (PNP)				M9PAV		M9PA	○	○	●	○	○				
	2-wire			12V	M9BAV		M9BA	○	○	●	○	○	—			

* Lead wire length symbols: 0.5 m Nil (Example) M9NW
 1 m M (Example) M9NWM
 3 m L (Example) M9NWL
 5 m Z (Example) M9NWZ

* Solid state auto switches marked with "○" are produced upon receipt of order.

• Take note of hysteresis with 2-color indication type switches. Refer to "Auto Switch Hysteresis" on page 487.



Series MHL Specific Product Precautions

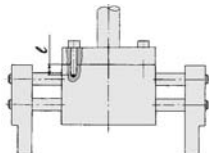
Be sure to read before handling.

Mounting Air Grippers/Series MHL2

Possible to mount from 2 directions.

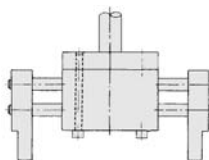
Axial Mounting

- Body tapped



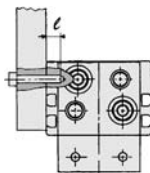
Model	Applicable bolts	Max. tightening torque (N·m)	Max. screw-in depth (mm)
MHL2-10D□	M4 x 0.7	2.1	8
MHL2-16D□	M5 x 0.8	4.3	10
MHL2-20D□	M6 x 1	7.3	12
MHL2-25D□	M8 x 1.25	17.7	16
MHL2-32D□	M8 x 1.25	18	16
MHL2-40D□	M10 x 1.5	36	20

- Body $\varnothing 10$ to $\varnothing 25$



Model	Applicable bolts	Max. tightening torque (N·m)
MHL2-10D□	M4 x 0.7	2.1
MHL2-16D□	M5 x 0.8	4.3
MHL2-20D□	M6 x 1	7.3
MHL2-25D□	M8 x 1.25	17.7

Lateral mounting



Model	Applicable bolts	Max. tightening torque (N·m)	Max. screw-in depth (mm)
MHL2-10D□	M4 x 0.7	1.4	5
MHL2-16D□	M5 x 0.8	2.8	7
MHL2-20D□	M6 x 1	4.8	7
MHL2-25D□	M8 x 1.25	12.0	7
MHL2-32D□	M8 x 1.25	12.0	11
MHL2-40D□	M10 x 1.5	24.0	12

How to Mount the Attachment to the Finger

- (1) Make sure that the piston rod is retracted so as not to apply undue strain on the piston rod while an attachment is being mounted to the finger.
- (2) Do not scratch or dent the sliding portion of the piston rod. Damage to the bearings or seals may cause air leaks or faulty operation.
- (3) Refer to the table below for the proper tightening torque on the bolt used for securing the attachment to the finger.

Model	Applicable bolts	Max. tightening torque (N·m)
MHL2-10D□	M4 x 0.7	1.4
MHL2-16D□	M5 x 0.8	2.8
MHL2-20D□	M6 x 1	4.8
MHL2-25D□	M8 x 1.25	12.0
MHL2-32D□	M10 x 1.5	24.0
MHL2-40D□	M12 x 1.75	42.2

