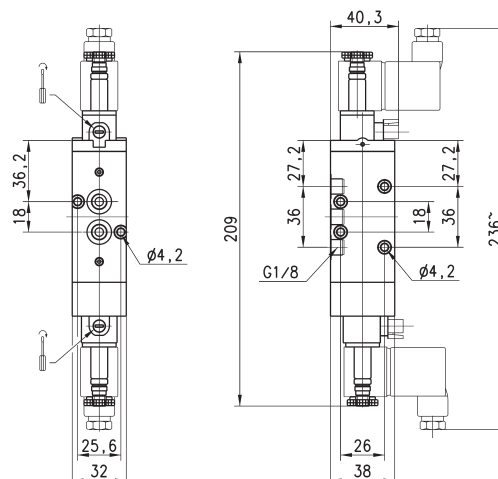
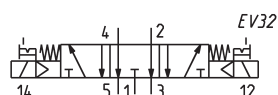
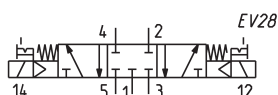


5/3-way solenoid valve, G1/8 - Mod. 468-011... and 478-011...



CC = Centres Closed
CO = Centres Open

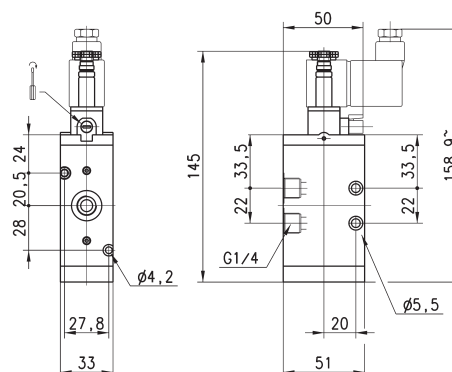
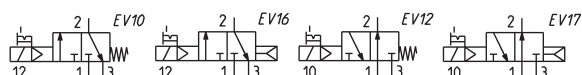


Mod.	Function	Flow rate Qn (l/min)	Operating pressure (bar)	Symbol
468-011-22	5/3 CC	600	2.5 ÷ 10	EV28
478-011-22	5/3 CO	600	2.5 ÷ 10	EV32

3/2-way solenoid valve, G1/4, monostable Mod. 434 and Mod. 444



These solenoid valves, which have electropneumatic actuation and spring return, are available in the NC (closed) or NO (open) version.



Mod.	Function	Flow rate Qn (l/min)	Operating pressure (bar)	Symbol
434-015-22	3/2 NC	1250	2.5 ÷ 10	EV10
434-016-22	3/2 NC	1250	2.5 ÷ 10	EV16
444-015-22	3/2 NO	1250	2.5 ÷ 10	EV12
444-016-22	3/2 NO	1250	2.5 ÷ 10	EV17