





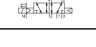
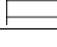
5/2-directional valve, Series HF02-LG

- For series : HF02-LG, CL03
- 5/2
- $Q_n = 1.42 \text{ Cv}$
- Pilot valve width : 16 mm
- Plate connection
- Manual override : without detent
- single solenoid double solenoid
- Pilot : External, Internal



Type	Spool valve, positive overlapping
Activation	Electrically
Pilot	External, Internal
Sealing principle	Soft sealing
Blocking principle	Single base plate principle
Certificates	UR (Underwriters Laboratories)
Working pressure min./max.	-13 ... 145 psi
Control pressure min./max.	37 ... 145 psi
Ambient temperature min./max.	32 ... 122 °F
Medium temperature min./max.	32 ... 122 °F
Medium	Compressed air
Max. particle size	5 μm
Oil content of compressed air	0 ... 5 mg/m ³
Nominal flow Q_n	1.42 Cv
Pilot control exhaust	With collective pilot air exhaust
Protection class with connection	IP65
Protective circuit	Z-diode
Reverse polarity protection	Protected against polarity reversal
LED status display	Yellow
Duty cycle	100 %
mounting screws	cross recessed DIN EN ISO 4757-Z2
Mounting screw tightening torque	0.96 ft./lbs.
Weight	0.317 lbs

Technical data

Part No.		MO	Operational voltage	Voltage tolerance
			DC	DC
0820056052			24 V	-15% / +20%
0820056502			24 V	-15% / +20%
0820056002			24 V	-15% / +20%

Part No.	Power consumption	Flow conductance	Flow conductance	Typ. switch-on time
	DC	b	C-value	
0820056052	0.35 W	0.38	6.13 l/(s*bar)	13 ms
0820056502	0.35 W	0.38	6.13 l/(s*bar)	13 ms
0820056002	0.35 W	0.38	6.13 l/(s*bar)	19 ms

Part No.	Typ. switch-off time
0820056052	40 ms
0820056502	15 ms
0820056002	30 ms

Nominal flow Q_n at 87 psi and Δp = 14.5 psi, MO = Manual override

Technical information

The min. control pressure must be adhered to, since otherwise faulty switching and valve failure may result!

The pressure dew point must be at least 27 °F under ambient and medium temperature and may not exceed 5.4 °F .

The oil content of compressed air must remain constant during the life cycle.

Use only the approved oils from AVENTICS. Further information can be found in the "Technical information" document (available in the MediaCentre).

The pilot type (external/internal) is not implemented in the valve, but in the end plate of the valve system.

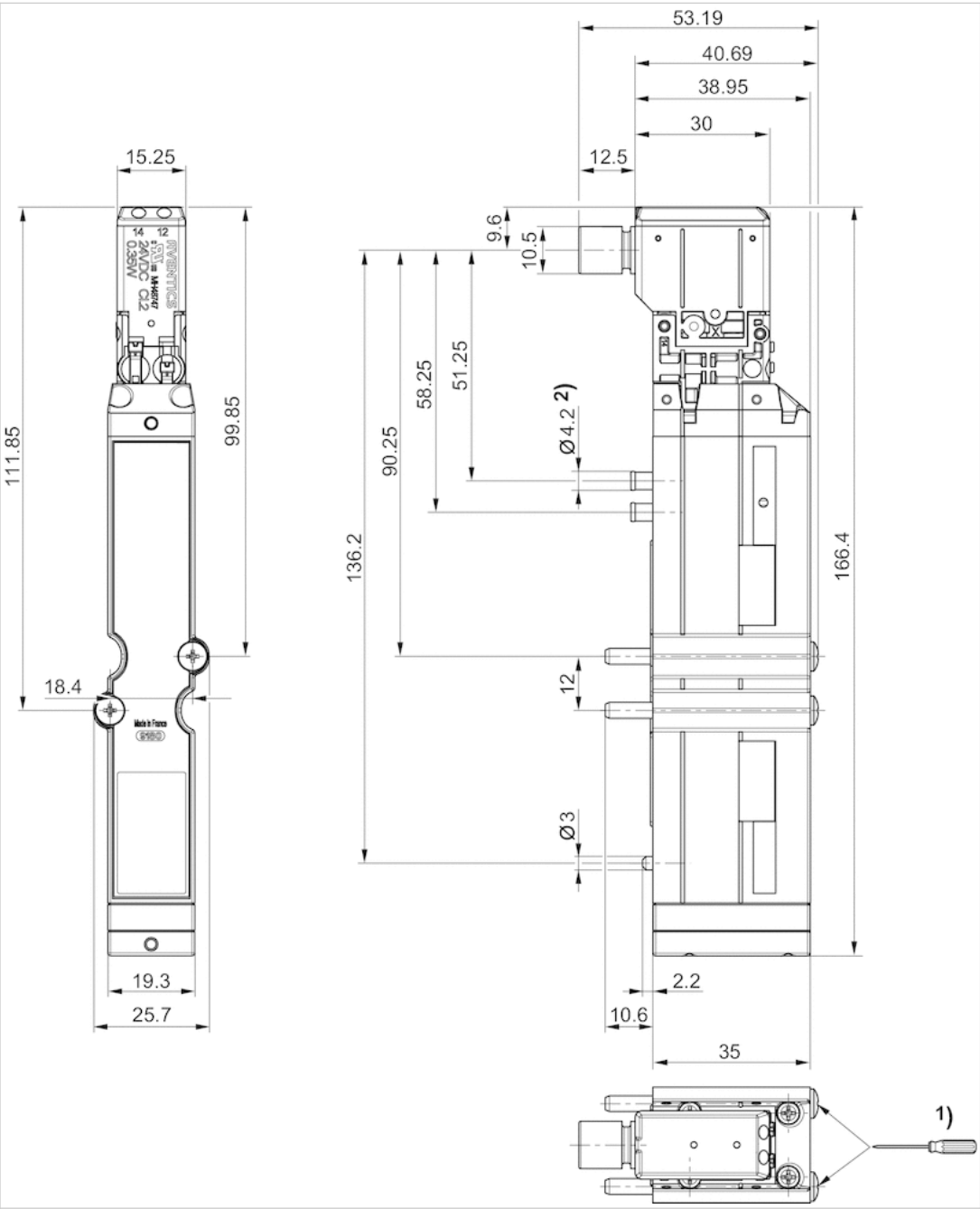
The pilot valve is UL (Underwriters Laboratories) certified.

Technical information

Material	
Housing	Polyamide
Seals	Acrylonitrile butadiene rubber Hydrogenated acrylonitrile butadiene rubber

Dimensions

Dimensions



1) =1.1Nm 800tr/min. max.