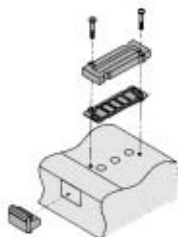


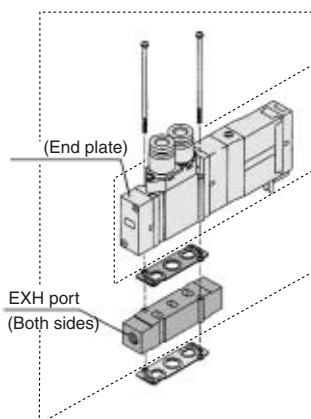
## Manifold Option

### ■ Blanking plate assembly



Series	Assembly part no.
<b>SX3000</b>	SY3000-26-10A
<b>SX5000</b>	SY5000-26-21A
<b>SX7000</b>	SY7000-26-23A

### ■ Individual EXH spacer assembly



Series	Assembly part no.	Port size
<b>SX3000</b>	SX3000-39-20A	M5 x 0.8
<b>SX5000</b>	SX5000-39-1□A	1/8
<b>SX7000</b>	SX7000-39-1□A	1/4

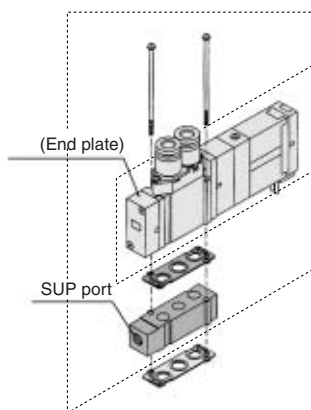
Note) For protection of the wiring unit section from drain, it should be piped at the EA port so that it will not be directly exposed to exhaust from the valve.

### ⚠ Caution

#### Mounting screw tightening torques

M2: 0.17 N·m  
M3: 0.8 N·m  
M4: 1.4 N·m

### ■ Individual SUP spacer assembly



Series	Assembly part no.	Port size
<b>SX3000</b>	SX3000-38-20A	M5 x 0.8
<b>SX5000</b>	SX5000-38-1□A	1/8
<b>SX7000</b>	SX7000-38-1□A	1/4

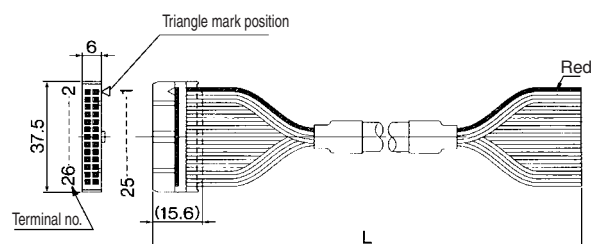
Note) The SUP port may be either on the lead wire side or on the end plate side (Factory assembled spacer will be shipped with the orientation shown in the figure.)

#### \* Thread type

Nil	Rc
F	G
N	NPT
T	NPTF

### ■ Cable assembly

**AXT100-FC26-**  
1 to 3



### Connector Assembly for Flat Ribbon Cable

Cable length (L)	Assembly part no.	Note
1.5 m	AXT100-FC26-1	Cable 26 cores x 28AWG
3 m	AXT100-FC26-2	
5 m	AXT100-FC26-3	



\* For other commercial connectors, use a 26 pins type with strain relief conforming to MIL-C-83503.

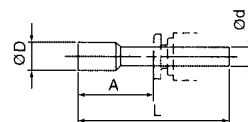
### Connector manufacturers' example

- Hirose Electric Co., Ltd.
- Japan Aviation Electronics Industry, Ltd.
- Sumitomo 3M Limited
- J.S.T. Mfg. Co., Ltd.
- Fujitsu Limited

### ■ Plug

These are inserted in cylinder ports or SUP/EXH ports which are not being used.

Purchasing order is available in units of 10 pieces.



### Dimensions

Applicable fittings fitting ød	Model	A	L	D
4	<b>KQ2P-04</b>	16	32	6
6	<b>KQ2P-06</b>	18	35	8
8	<b>KQ2P-08</b>	20.5	39	10
10	<b>KQ2P-10</b>	22	43	12
5/32"	<b>KQ2P-03</b>	16	32	6
1/4"	<b>KQ2P-07</b>	18	35	8.5
5/16"	<b>KQ2P-09</b>	20.5	39	10
3/8"	<b>KQ2P-11</b>	22	43	11.5

### ⚠ Warning

When mounting a valve or spacer on the manifold base or sub-plate, etc., those mounting directions are determined. If mounted in the wrong direction, the equipment to be connected may cause malfunction. Refer to external dimensions in pages 1-6-51 to 1-6-53, and then mount it.