

Cylinder: Standard/Non-rotating Type Double Acting, Single/Double Rod

Series C76

ø32, ø40

How to Order

Double acting Single rod

Double acting Double rod

Built-in magnet

| | |
|-----|-----------------|
| Nil | None |
| D | Built-in magnet |

Type

| | |
|-----|--|
| Nil | Standard |
| K | Non-rotating rod (Rubber cushion only) |

Mounting style

| Symbol | Mounting |
|--------|-------------------------|
| E* | Double end |
| F** | Front nose |
| Y** | Front nose in line port |

* Double acting, Double rod type: Only double end type. (E)
** Except air cushion type.

Auto switch mounting type

| | |
|---|---------------|
| A | Rail mounting |
| B | Band mounting |

Applicable auto switches and bands are shown on pages 6-10-45 to 6-10-46. Please order auto switches and bands separately.

Option

| | |
|----|--|
| R | Stainless steel piston rod, rod end nut and mounting nut |
| R2 | Stainless steel piston rod and rod end nut |

Note) Please refer to page 6-10-46 for additional options. Only one option can be selected.

Rod boot

| | |
|-----|-------------------------------------|
| Nil | Without rod boot |
| J | Nylon tarpaulin one side |
| K | Heat resistant tarpaulin one side |
| JJ* | Nylon tarpaulin both sides |
| KK* | Heat resistant tarpaulin both sides |

* In the case of double acting/double rod.

Cushion

| | |
|-----|----------------------------------|
| Nil | Rubber cushion (Standard) |
| C | Air cushion (Only "E" execution) |

Bore size

| Bore size (mm) | Standard stroke (mm) | Max. stroke (mm) |
|----------------|--------------------------|------------------|
| 32 | 10, 25, 40, 50, 80, 100, | 1000 |
| 40 | 125, 160, 200, 250, 300 | |

Mounting Bracket Part No.

| Bore size (mm) | | 32 | 40 |
|------------------|---|-------------|-------------|
| Mounting bracket | Flange, Foot (1 pc.) | C76F32A | C76F40A |
| | Flange, Foot (2 pcs. with mounting nut 1 pc.) | C76F32B | C76F40B |
| | Trunnion | C76T32 | C76T40 |
| | Clevis | C76C32 | C76C40 |
| Accessory | Single knuckle joint | KJ10DA | KJ12DA |
| | Double knuckle joint | GKM10-20A | GKM12-24A |
| | Floating joint | JA25-10-150 | JA40-12-175 |

Replacement Parts

| Bore size (mm) | Part no. | | Note |
|----------------|----------|--------------|--|
| | Standard | Non-rotating | |
| 32 | C76-32PS | C76K-32PS | Every set includes: 1 rod seal 1 seal retaining washer 1 retaining ring |
| 40 | C76-40PS | C76K-40PS | |

Suitable also C76 series

Example of How to Order

- Cylinder without auto switch, Bore size: 32, Stroke: 100, Double acting/Single rod and Double end type.
C76E32-100 1 pc. Cylinder
- Cylinder without auto switch, Bore size: 32, Stroke: 50, Double acting/Double rod type and Rod and head foot mounting.
C76WE32-50 1 pc. Cylinder
C76F32B 2 pcs. Foot bracket
- Cylinder with auto switch (Band mounted type, 2 pcs.), Bore size: 40, Stroke: 100, Double acting/Single rod, Front nose in line port type and Flange mounting.
CD76Y40-100-B 1 pc. Cylinder
C76F40A 1 pc. Flange mounting
D-C73L 2 pcs. Auto switch
BM2-040 2 pcs. For auto switch mounting band
- Cylinder with auto switch (Rail mounted type, 2 pcs.), Bore size: 40, Stroke: 50, Single acting/Spring return, Front nose type and Trunnion mounting.
CD76F40-50S-A 1 pc. Cylinder
C76T40 1 pc. Trunnion mounting
D-A73L 2 pcs. Auto switch
- Non-rotating: Cylinder without auto switch, Bore size: 32, Stroke: 100, Double acting/Single rod and Double end type.
C76KE32-100 1 pc. Cylinder

CJ1

CJP

CJ2

CM2

CG1

MB

MB1

CA2

CS1

C76

C85

C95

CP95

NCM

NCA

D-

-X

20-

Data

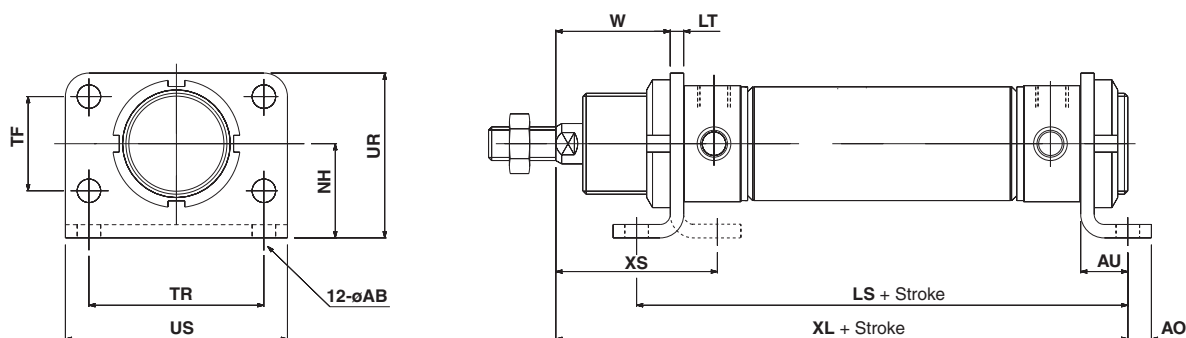
Series C76

Dimensions with Mounting Bracket

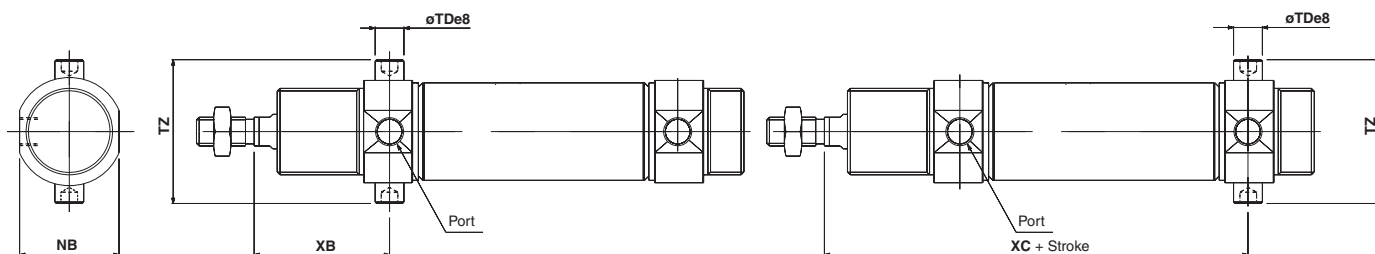
[First angle projection]

Double acting: Single rod

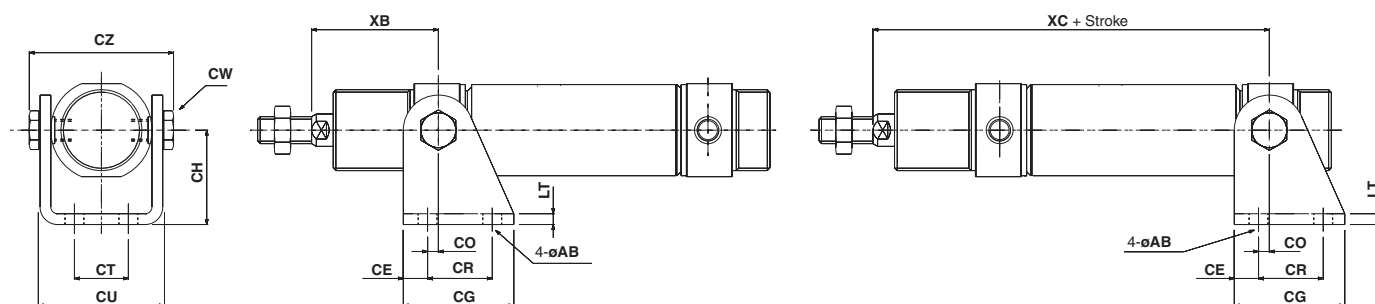
Rod foot (Flange), Rod and head foot: C76F32^A, C76F40^B



Rod trunnion, Head trunnion: C76T32, C76T40



Rod clevis, Head clevis: C76C32, C75C40



(mm)

| Bore | Rod foot (Flange) | | | | | | | | | | | | | Rod/Head trunnion | | | | Rod clevis, Head clevis | | | | | | | | | | | | | |
|------|-------------------|----|----|-----|----|----|----|----|----|----|----|-----|----|-------------------|--|------|----|-------------------------|-----|----|----|----|----|----|----|------|----|------|----|----|-----|
| | øAB | AO | AU | LS | LT | NH | TF | TR | UR | US | W | XL | XS | NB | øTDe8 | TZ | XB | XC | øAB | CE | CG | CH | CO | CR | CT | CU | CW | CZ | LT | XB | XC |
| 32 | 7 | 7 | 14 | 96 | 4 | 28 | 28 | 52 | 49 | 66 | 34 | 120 | 48 | 34.5 | 10 ^{-0.025} _{-0.047} | 47.9 | 47 | 97 | 7 | 9 | 41 | 35 | 4 | 24 | 20 | 46.8 | 13 | 57.9 | 4 | 47 | 97 |
| 40 | 9 | 10 | 20 | 129 | 5 | 33 | 30 | 60 | 58 | 80 | 40 | 154 | 60 | 42.5 | 12 ^{-0.032} _{-0.059} | 59.3 | 57 | 122 | 9 | 12 | 52 | 40 | 3 | 30 | 28 | 58.2 | 17 | 72.3 | 5 | 57 | 122 |