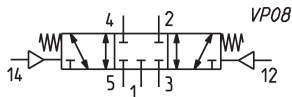
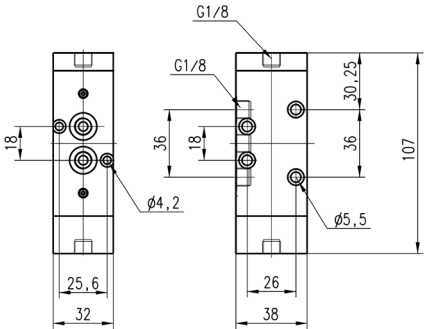


5/3-way C.C. valve, G1/8, monostable, with central stable position



CC = Centres Closed

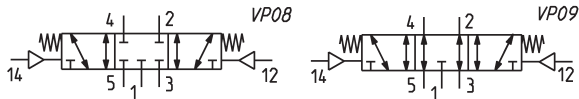
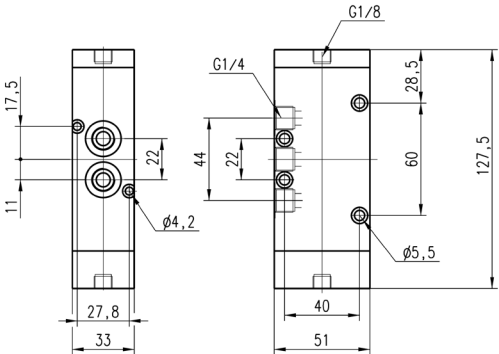


Mod.	Mounting	Function	Flow rate Qn (NL/min)	min. pilot Pressure (bar)	Working pressure (bar)
468-33	in-line/on manifold	5/3 CC	700	2.5	-0.9 ÷ 10

5/3-way CC CO valve, G1/4, monostable, central stable position



CC = Centres Closed
CO = Centres Open



Mod.	Mounting	Function	Flow rate Qn (NL/min)	min. pilot Pressure (bar)	Working pressure (bar)	Symbol
464-33	in-line/on manifold	5/3 CC	1250	2.5	-0.9 ÷ 10	VP08
474-33	in-line/on manifold	5/3 CO	1200	2.5	-0.9 ÷ 10	VP09