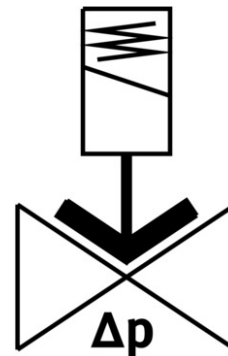



# Solenoid valve VZWM-L-M22C-G114-F5-R1

Part number: 546167

FESTO



 General operating condition

## Data sheet

| Feature                                  | Value   |
|--|---|
| Design                                   | Diaphragm valve<br>servo-controlled   |
| Type of actuation                        | Electric  |
| Sealing principle                        | Soft  |
| Mounting position                        | Preferably vertical   |
| Type of mounting                         | In-line installation  |
| Connection Process valve                 | G1 1/4  |
| Electrical connection                    | Solenoid coil type MH-..., coil can be ordered as an accessory                      |
| Nominal size                             | 40 mm   |
| Valve function                           | 2/2-way, closed, monostable   |
| Flow direction                           | Non-reversible  |
| Medium                                   | Compressed air to ISO 8573-1:2010 [7:4:4]<br>Inert gases<br>Water<br>Neutral fluids |
| Medium pressure, valve for liquid media  | 0.7 bar ... 6 bar   |
| Medium pressure, valve for gaseous media | 0.7 bar ... 10 bar  |
| Pressure difference                      | 0.7 bar   |
| Type of piloting                         | Pilot actuated  |
| Symbol                                   | 00995681  |
| Max. viscosity                           | 22 mm <sup>2</sup> /s   |
| Media temperature                        | -10 °C ... 60 °C  |
| Media temperature for fluids             | 5 °C ... 50 °C  |
| Ambient temperature                      | -10 °C ... 60 °C  |
| Flow rate Kv                             | 21.3 m <sup>3</sup> /h  |
| Standard nominal flow rate               | 24000 l/min   |
| Switching time on                        | 26 ms   |
| Switch-on time for fluids                | 1400 ms   |
| Switching time off                       | 20 ms   |
| Switch-off time for fluids               | 1900 ms   |

| Feature                                      | Value  |
|--|--|
| b value                                      | 0.6  |
| C value                                      | 75 l/sbar  |
| Note on materials                            | RoHS-compliant                                     |
| LABS (PWIS) conformity                       | VDMA24364 zone III                                 |
| Material housing                             | Stainless steel casting                            |
| Material number housing                      | 1.4581   |
| Material seals                               | NBR  |
| Material plunger tube                        | High-alloy steel                                   |
| Product weight                               | 2650 g   |
| CE mark (see declaration of conformity)      | In accordance with EU Pressure Equipment Directive |
| CE marking (see declaration of conformity)   | to UK Pressure Equipment Regulations               |
| Corrosion resistance class CRC               | 3 - high corrosion stress                          |
| Max. tightening torque for cover screw       | 30 Nm  |
| Max. tightening torque for connecting thread | 450 Nm   |
| Max. tightening torque for coil fastening    | 2 Nm   |