



The Timken Company

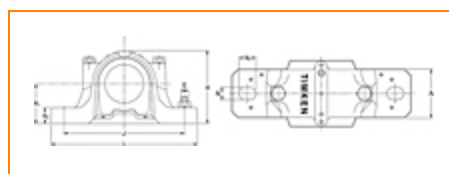
4500 Mt Pleasant St. NW

N. Canton, OH 44720

Phone: (234) 262-3000

E-Mail: CustomerCAD@timken.com • **Web site:** www.timken.com

Housing – Bearing – Seal SNTD 518-615 - 22315K - VR615, SNT Taper Bore Plummer Block Housed Units



[Types of Components](#) | [Housing](#) | [Bearing](#) | [Dimensions](#) | [Specifications](#)

Types of Components

Housing	SNTD 518-615
Bearing	22315K
Locating Rings (width x OD)	SR160X5
Seal Type	V-ring
Seal	VR615
Adapter Sleeve ¹	H2315
Locknut	KM15
Lockwasher	MB15
End Cover ²	EC518-615

Housing

Material	Ductile iron
Housing Mass	13.1 Kg
Bolt Qty	2

Bearing

Cage Type	EJ
C1 Dynamic Load Rating	471
C0 Static Load Rating	510
Max Oil Speed	3900
Max Grease Speed	3300

Dimensions

Shaft Diameter d	65 mm
A	140.00 mm
A1	100 mm
G	M20
H	194 mm
H1	100.0 mm
H2	35.0 mm
J	290.00 mm
Jmax	295 mm
Jmin	285 mm
L	345.00 mm
N	22 mm

N1

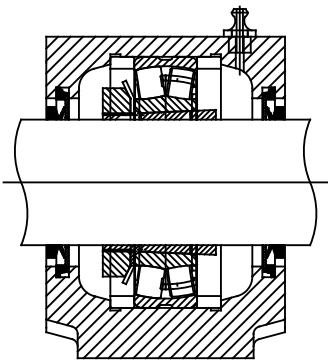
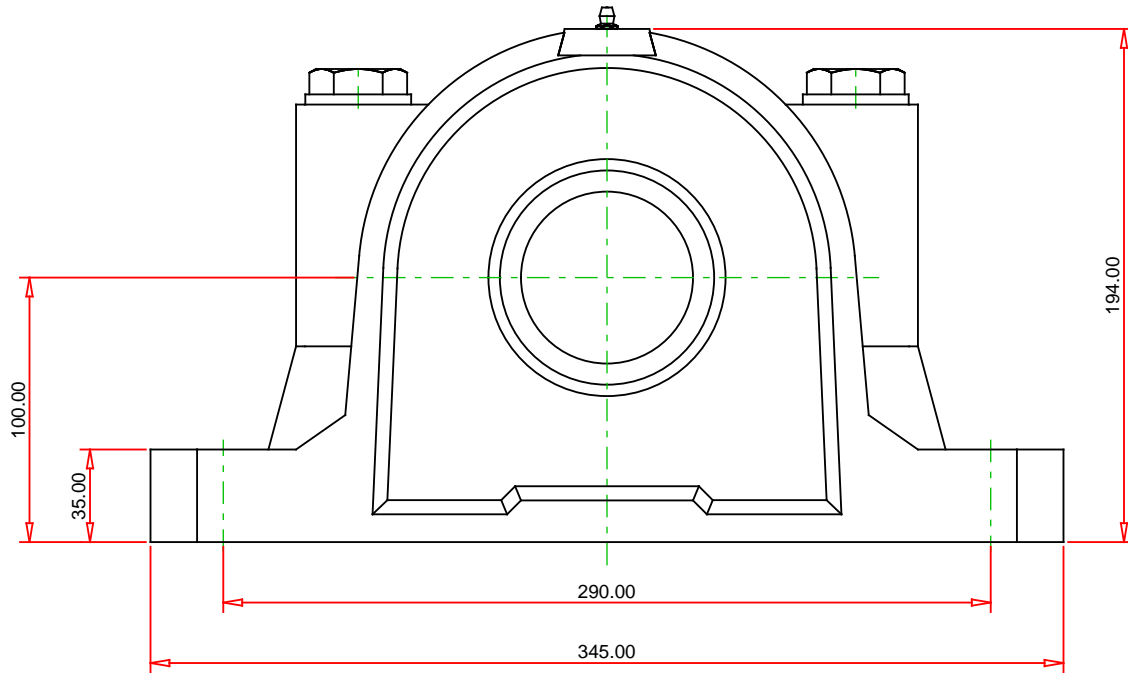
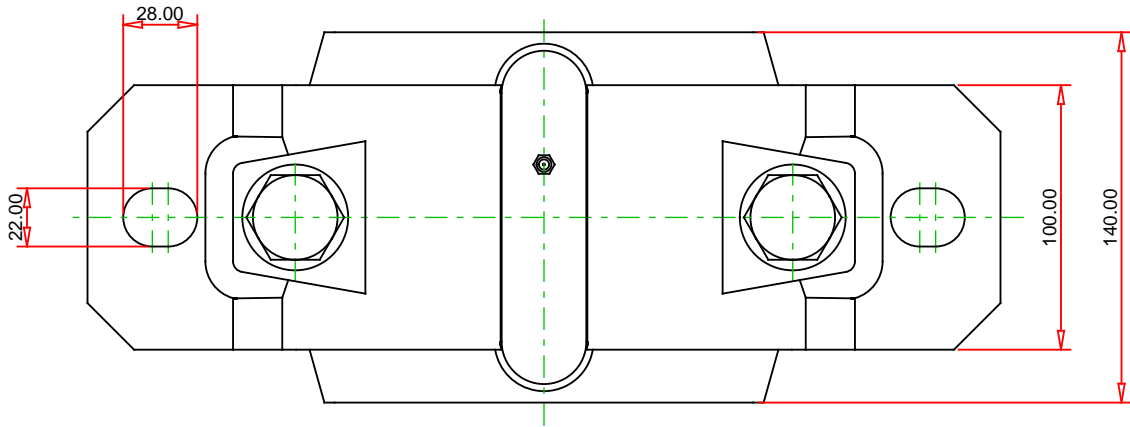
28 mm

Specifications

UPC Code	999999999
Alternate Part Name	SNTD518-615 - 22315K - VR615

¹ Purchase the Adapter Sleeve separately

² Two seals are required for a thru shaft application. One end cover can be used if application is not a thru shaft design. In this case, only one seal is required.



Note: Section View not to Scale

METRIC UNITS

Housing	SNTD 518-615
Bearing	22315K
Seal (Quantity 2)	VR615
Seal Type	V-ring
Locating Ring (Quantity 2)	SR160X5
Adapter Sleeve	H2315
(includes 1 sleeve, 1 locknut and 1 lockwasher)	

TIMKEN®

THE TIMKEN COMPANY
NORTH CANTON, OHIO USA

SNTD 518-615 - 22315K - VR615 SNT Taper Bore Plummer Block Housing Units

C1 Dynamic Load Rating (2 rows)	471 kN
C0 Static Load Rating	510 kN
Max Oil Speed	3900 RPM
Max Grease Speed	3300 RPM
Material	Ductile iron

Every reasonable effort has been made to ensure the accuracy of the information contained in this writing, but no liability is accepted for errors, omissions or for any other reason.

FOR DISCUSSION ONLY