

Compact Cylinder: Plate Type Double Acting, Single Rod

CQU Series

Size: 20, 25, 32, 40

How to Order

CQU B 20 - 30 - M9BW

Mounting	
B	Through-hole/Both ends tapped common (Standard)
L	Vertical foot
M	Lateral foot
D	Double clevis

- * Support brackets are shipped together, (but not assembled).
- * Cylinder mounting bolt is not included.
- Order it separately from "Mounting Bolt for CQU" on page 1025.

Number of auto switches

Nil	2 pcs.
S	1 pc.
n	"n" pcs.

Auto switch

Nil	Without auto switch (Built-in magnet)
------------	---------------------------------------

- * For applicable auto switch models, refer to the table below.

Size

20	Piston area equivalent to 20 mm
25	Piston area equivalent to 25 mm
32	Piston area equivalent to 32 mm
40	Piston area equivalent to 40 mm

Rod end thread

Nil	Rod end female thread
M	Rod end male thread

Cylinder stroke (mm)

Size	Stroke
20, 25	5, 10, 15, 20, 25, 30, 35, 40, 45, 50
32, 40	5, 10, 15, 20, 25, 30, 35, 40, 45, 50, 75, 100

Applicable Auto Switches

Refer to pages 1575 through to 1701 for further information on auto switches.

Type	Special function	Electrical entry	Indicator light	Wiring (Output)	Load voltage		Auto switch model		Lead wire length (m)			Pre-wired connector	Applicable load					
					DC	AC	Perpendicular	In-line	0.5 (Nil)	1 (M)	3 (L)		5 (Z)					
Solid state auto switch	—	Grommet	Yes	3-wire (NPN)	24 V	5 V, 12 V	—	M9NV	M9N	●	●	○	○	IC circuit	Relay, PLC			
				3-wire (PNP)				M9PV	M9P	●	●	○	○					
				2-wire				M9BV	M9B	●	●	○	○					
				3-wire (NPN)				M9NWW	M9NW	●	●	○	○					
	Diagnostic indication (2-color indicator)			3-wire (PNP)	M9PWW	M9PW	●	●	○	○	IC circuit							
				2-wire	M9BWW	M9BW	●	●	○	○	—							
	Water resistant (2-color indicator)			3-wire (NPN)	M9NAV*1	M9NA*1	○	○	○	○	IC circuit							
				3-wire (PNP)	M9PAV*1	M9PA*1	○	○	○	○	—							
	Reed auto switch	—		Grommet	No	3-wire (NPN equivalent)	24 V	12 V	100 V 100 V or less	A96V	A96	●	—	—		—	IC circuit	—
						A93V*2				A93	●	●	●	—		—	Relay, PLC	
A90V			A90			●				—	—	—	—	IC circuit				

- *1 The water resistant improved D-M9□A and M9□AV type can be mounted, but cylinders are not designed to be water resistant improved construction.
- *2 1 m type lead wire is only applicable to D-A93.

- * Lead wire length symbols: 0.5 m Nil (Example) M9NV
1 m M (Example) M9NWM
3 m L (Example) M9NWL
5 m Z (Example) M9NWX
- * Solid state switches marked with "○" are produced upon receipt of order.

- * For details about the auto switch with pre-wired connector, refer to pages 1648 and 1649.

- * Auto switches are shipped together, (but not assembled).

Note) The D-M9□V, M9□WV, M9□AV, and A9□V type cannot be mounted on the port surface depending on the cylinder's stroke and the fitting size for piping. Please confirm SMC separately.

CJU

CU

CQS

JCQ

CQ2

RQ

CQM

CQU

MU

D-□

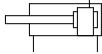
-X□

Technical Data



Symbol

Rubber bumper (Non-circular piston)



Specifications

Equivalent bore size (mm)	20	25	32	40
Action	Double acting, Single rod			
Fluid	Air			
Proof pressure	1.0 MPa			
Maximum operating pressure	0.7 MPa			
Minimum operating pressure	0.08 MPa	0.05 MPa		
Ambient and fluid temperature	Without auto switch: -10 to 70°C (No freezing)			
	With auto switch: -10 to 60°C (No freezing)			
Cushion	Rubber bumper			
Rod end thread	Female thread, Male thread			
Stroke length tolerance	$^{+1.4}_0$			
Mounting	Through-hole/Both ends tapped common			
Piston speed	50 to 500 mm/s			

* The stroke length tolerance does not include the changed amount of the rubber bumper due to compression.

Theoretical Output

Size	Rod size (mm)	Operating direction	Piston area (mm ²)	Operating pressure (MPa)			Unit (N)
				0.3	0.5	0.7	
20	10	IN	236	71	118	165	
		OUT	314	94	157	220	
25	10	IN	412	124	206	288	
		OUT	491	147	246	344	
32	14	IN	650	195	325	455	
		OUT	804	241	402	563	
40	14	IN	1103	331	552	772	
		OUT	1256	377	628	879	

Standard Stroke

Size	Standard stroke	Unit (mm)
20, 25	5, 10, 15, 20, 25, 30, 35, 40, 45, 50	
32, 40	5, 10, 15, 20, 25, 30, 35, 40, 45, 50, 75, 100	

* Other intermediate strokes can be manufactured upon receipt of order. Please contact SMC.

Support Bracket Part No.

Size	Vertical foot ^{Note 1)}		Lateral foot		Double clevis
	Rod end	Head end	Rod end	Head end	
20	CQU-LR20	CQU-LH20	CQU-MR20	CQU-MH20	CQU-D20
25	CQU-L25		CQU-M25		CQU-D25
32	CQU-L32		CQU-M32		CQU-D32
40	CQU-L40		CQU-M40		CQU-D40

Note 1) When ordering a foot bracket of size 20, check which end, rod end or head end, it will be on. For other sizes, the part number is common to both ends.

Note 2) Parts belonging to each bracket are as follows.

Vertical foot, Lateral foot: Body mounting bolt

Double clevis: Clevis pin, C-type retaining ring for shaft, Body mounting bolt

Weight

Unit (g)

Size	Cylinder stroke (mm)											
	5	10	15	20	25	30	35	40	45	50	75	100
20	105	115	125	134	144	153	163	173	182	192	—	—
25	127	138	148	159	169	180	190	201	211	222	—	—
32	199	214	228	243	257	272	286	301	315	330	402	475
40	264	282	299	316	333	351	368	385	403	420	506	593

Additional Weight

Unit (g)

Size		20	25	32	40
Rod end male thread	Male thread	19	19	32	32
	Nut	4	4	10	10
Vertical foot (Including mounting bolt)		84	91	122	162
Lateral foot (Including mounting bolt)		105	113	145	203
Double clevis (Including pin, retaining ring, mounting bolt)		60	76	149	266

How to Calculate

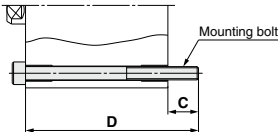
(Example) **CQUD32-50M**

- Basic weight: CQUB32-50.....330 g
 - Additional weight: Rod end male thread..... 42 g
 - Double clevis 149 g
-
- 521 g

Mounting Bolt for CQU

How to Mount: Use this bolt for mounting into a through-hole.
Refer to the following for ordering procedures.
Order the actual number of bolts that will be used.

Example) CQ-M5 x 55L 2 pcs.



Cylinder model	C	D	Mounting bolt part no.
CQUB20-5	7.5	55	CQ-M5 x 55L
-10		60	x 60L
-15		65	x 65L
-20		70	x 70L
-25		75	x 75L
-30		80	x 80L
-35		85	x 85L
-40		90	x 90L
-45		95	x 95L
-50		100	x 100L

Cylinder model	C	D	Mounting bolt part no.
CQUB32-5	10.5	65	CQ-M5 x 65L
-10		70	x 70L
-15		75	x 75L
-20		80	x 80L
-25		85	x 85L
-30		90	x 90L
-35		95	x 95L
-40		100	x 100L
-45		105	x 105L
-50		110	x 110L
-75		135	x 135L
-100		160	x 160L

Cylinder model	C	D	Mounting bolt part no.
CQUB25-5	7.5	55	CQ-M5 x 55L
-10		60	x 60L
-15		65	x 65L
-20		70	x 70L
-25		75	x 75L
-30		80	x 80L
-35		85	x 85L
-40		90	x 90L
-45		95	x 95L
-50		100	x 100L

Cylinder model	C	D	Mounting bolt part no.
CQUB40-5	10.5	65	CQ-M5 x 65L
-10		70	x 70L
-15		75	x 75L
-20		80	x 80L
-25		85	x 85L
-30		90	x 90L
-35		95	x 95L
-40		100	x 100L
-45		105	x 105L
-50		110	x 110L
-75		135	x 135L
-100		160	x 160L

Material: Chromium molybdenum steel Surface treatment: Zinc chromated

CQU

CU

CQS

JCQ

CQ2

RQ

CQM

CQU

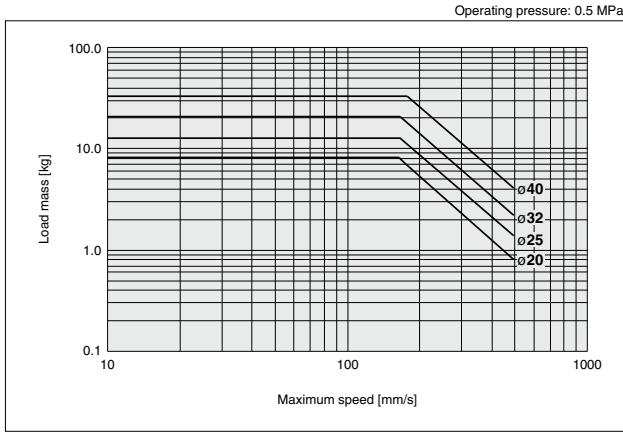
MU

D-□

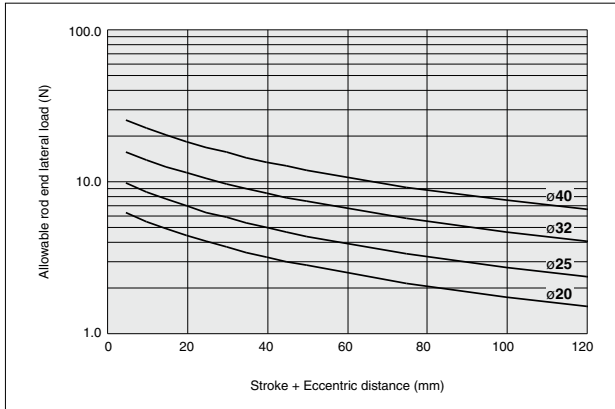
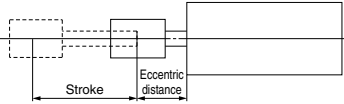
-X□

Technical Data

Allowable Kinetic Energy

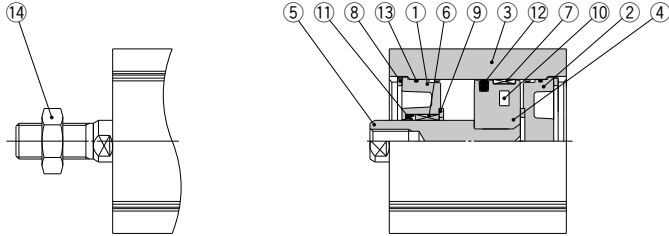


Allowable Rod End Lateral Load



Allowable rod end lateral load can be found from the above graph. Do not apply a load beyond the line on the graph.

Construction



Rod end male thread

Component Parts

No.	Description	Material	Note
1	Rod cover	Aluminum die-casted	Chromated
2	Head cover	Aluminum die-casted	Chromated
3	Cylinder tube	Aluminum alloy	Hard anodized
4	Piston	Aluminum die-casted	Chromated
5	Piston rod	Stainless steel	ø20, ø25
		Carbon steel	ø32, ø40, Hard chrome plated
6	Bushing	Bearing alloy	
7	Wear ring	Fluoropolymer	
8*	N-type retaining ring	Carbon tool steel	Phosphate treatment
9	Bumper	Urethane	
10	Magnet	—	
11*	Rod seal	NBR	
12*	Piston seal	NBR	
13*	O-ring	NBR	
14	Rod end nut	Carbon steel	Chromated

Replacement Parts: Seal Kit

Size	Kit no.	Contents
20	CQUB20-PS	Set of component parts ⑧, ⑪, ⑫, ⑬
25	CQUB25-PS	
32	CQUB32-PS	
40	CQUB40-PS	

* Seal kit includes ⑧, ⑪, ⑫, ⑬. Order the seal kit, based on each size.

* Seal kit does not include a grease package. Order it separately.

* Grease package part number: GR-S-010 (10 g)

CUJ

CU

CQS

JCQ

CQ2

RQ

CQM

CQU

MU

D-□

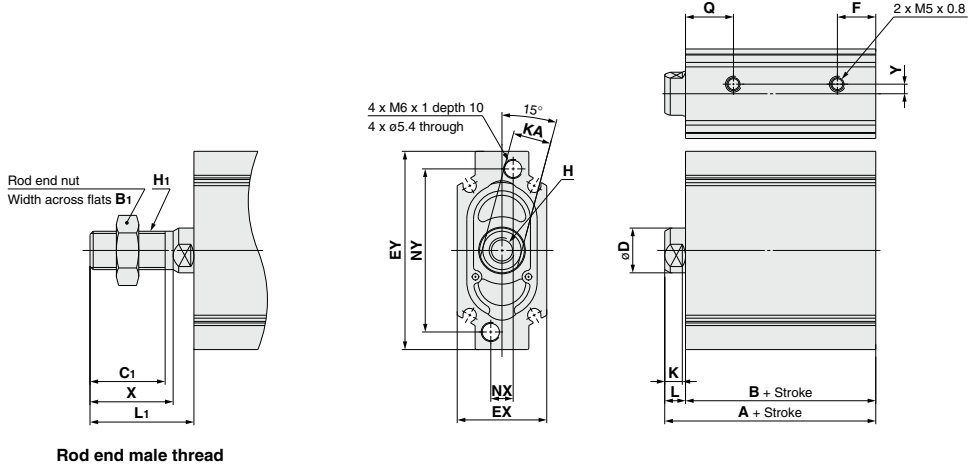
-X□

Technical
Data

Dimensions

* For auto switch mounting position and its mounting height, refer to page 1031.

Basic (Through-hole/Both ends tapped common): CQUB



Rod end male thread

Basic

(mm)

Size	Stroke range (mm)	A	B	D	EX	EY	F	H	K	KA	L	NX	NY	Q	Y
20	5 to 50	49	42.5	10	22	47	11.5	M5 x 0.8 depth 8	5	8	6.5	5.5	36	15	3
25	5 to 50	49	42.5	10	24	53	11	M5 x 0.8 depth 8	5	8	6.5	5	41	14.5	4
32	5 to 100	56	49.5	14	28	62	12	M8 x 1.25 depth 13	6	12	6.5	7	51	15	3
40	5 to 100	56	49.5	14	31	80	12	M8 x 1.25 depth 13	6	12	6.5	7	69	15	3

Rod End Male Thread

(mm)

Size	X	C1	B1	L1	H1
20	18	15.5	13	24.5	M8 x 1.25
25	18	15.5	13	24.5	M8 x 1.25
32	26	23.5	19	32.5	M12 x 1.25
40	26	23.5	19	32.5	M12 x 1.25

* For details about the rod end nut, refer to page 1030.