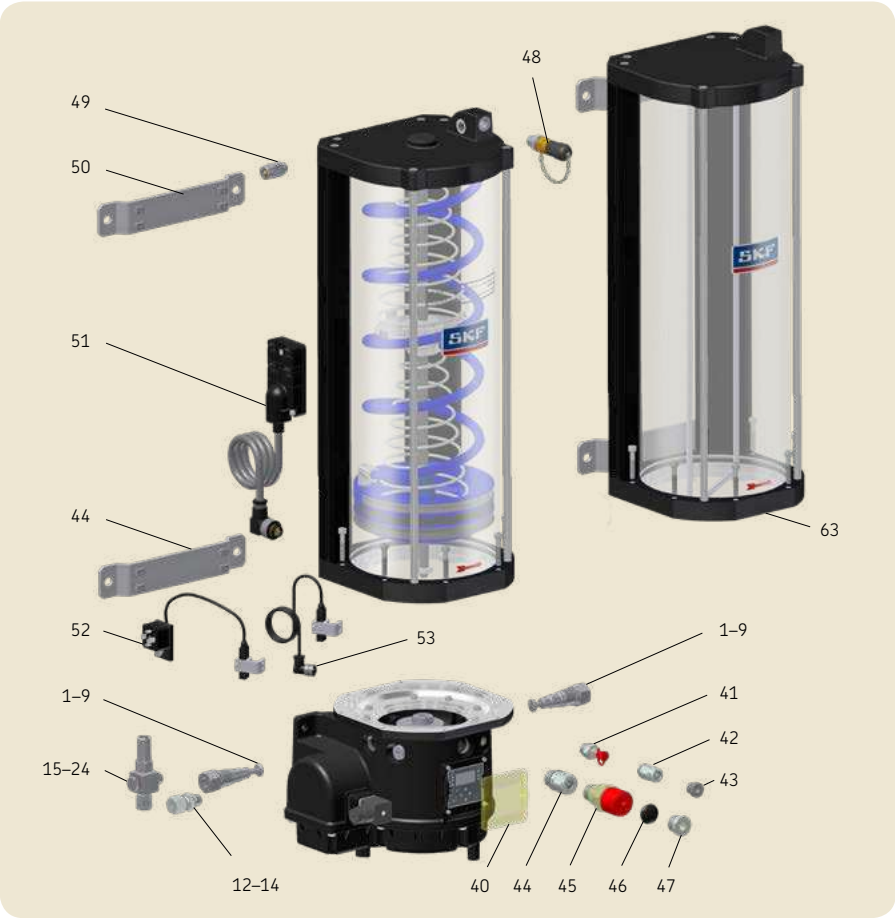


KFG piston pump unit

Exploded-view and spare parts drawings



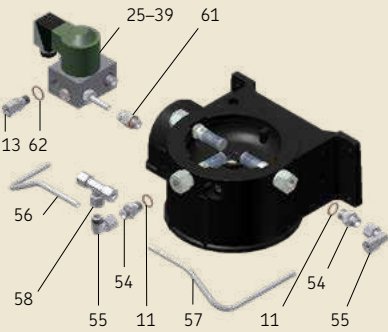
! Only original spare parts from SKF Lubrication Systems Germany GmbH may be used.

Unauthorized alterations to products and the use of non-original spare parts and accessories are not permitted.

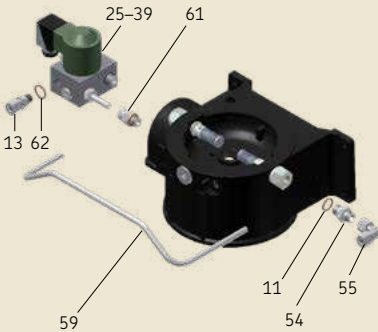
! Dismantling of the product or individual parts thereof within the statutory warranty period is not permitted and voids any claims.

! Repair work may only be performed by the Service department of SKF Lubrication Systems Germany GmbH. In the event of questions in reference to installation or maintenance, please contact SKF Lubrication Systems Germany GmbH or a an SKF-authorized dealer or service partner.

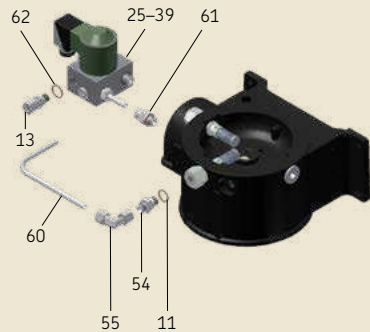
SKF MonoFlex layout A with three pump elements



SKF MonoFlex layout B with two pump elements



SKF MonoFlex layout C with two pump elements



Wearing parts

Pos.	Order number	ID used in configurator	Description
1	KFG1.U0	E	Pump element with spring-return piston 5,0 cm ³ /min
2	KFG1.U1	A	Pump element with spring-return piston 2,5 cm ³ /min
3	KFG1.U2	B	Pump element with spring-return piston 1,8 cm ³ /min
4	KFG1.U3	C	Pump element with spring-return piston 1,3 cm ³ /min
5	KFG1.U4	D	Pump element with spring-return piston 0,8 cm ³ /min
6	KFG1.U0-E	L	Pump element with positively driven piston 5,0 cm ³ /min
7	KFG1.U1-E	G	Pump element with positively driven piston 2,5 cm ³ /min
8	KFG1.U2-E	H	Pump element with positively driven piston 1,8 cm ³ /min
9	KFG1.U3-E	J	Pump element with positively driven piston 1,3 cm ³ /min