



The Timken Company

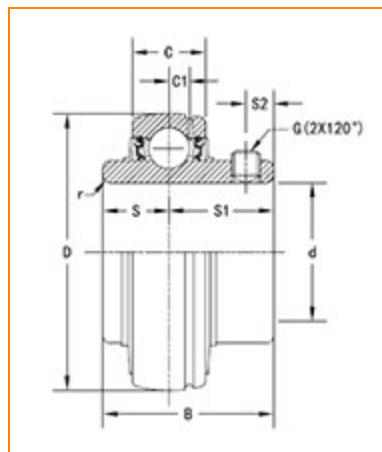
4500 Mt Pleasant St. NW

N. Canton, OH 44720

Phone: (234) 262-3000

E-Mail: CustomerCAD@timken.com • **Web site:** www.timken.com

Part Number UC317, UC 300 Wide Inner Ring Ball Bearings - Set Screw Locking



[Specifications](#) | [Dimensions](#) | [Basic Load Ratings](#)

Specifications

Bore Type	Cylindrical bore
Bearing Type	Ball Bearing
Shaft Size d	85 mm
Material	Bearing Steel
Locking Device	Set Screw Locking

Dimensions

Outside Diameter D	180 mm 7.087 in
---------------------------	--------------------



Outside Ring Width C 46 mm
1.8110 in

Radius r 3 mm
0.118 in

Groove Position C1 15 mm
0.591 in

Center of Bearing from End S 40 mm
1.575 in

Dimension S1 56 mm
2.205 in

Set Screw Distance S2 16 mm
0.630 in

Set Screw Size M16×1.5

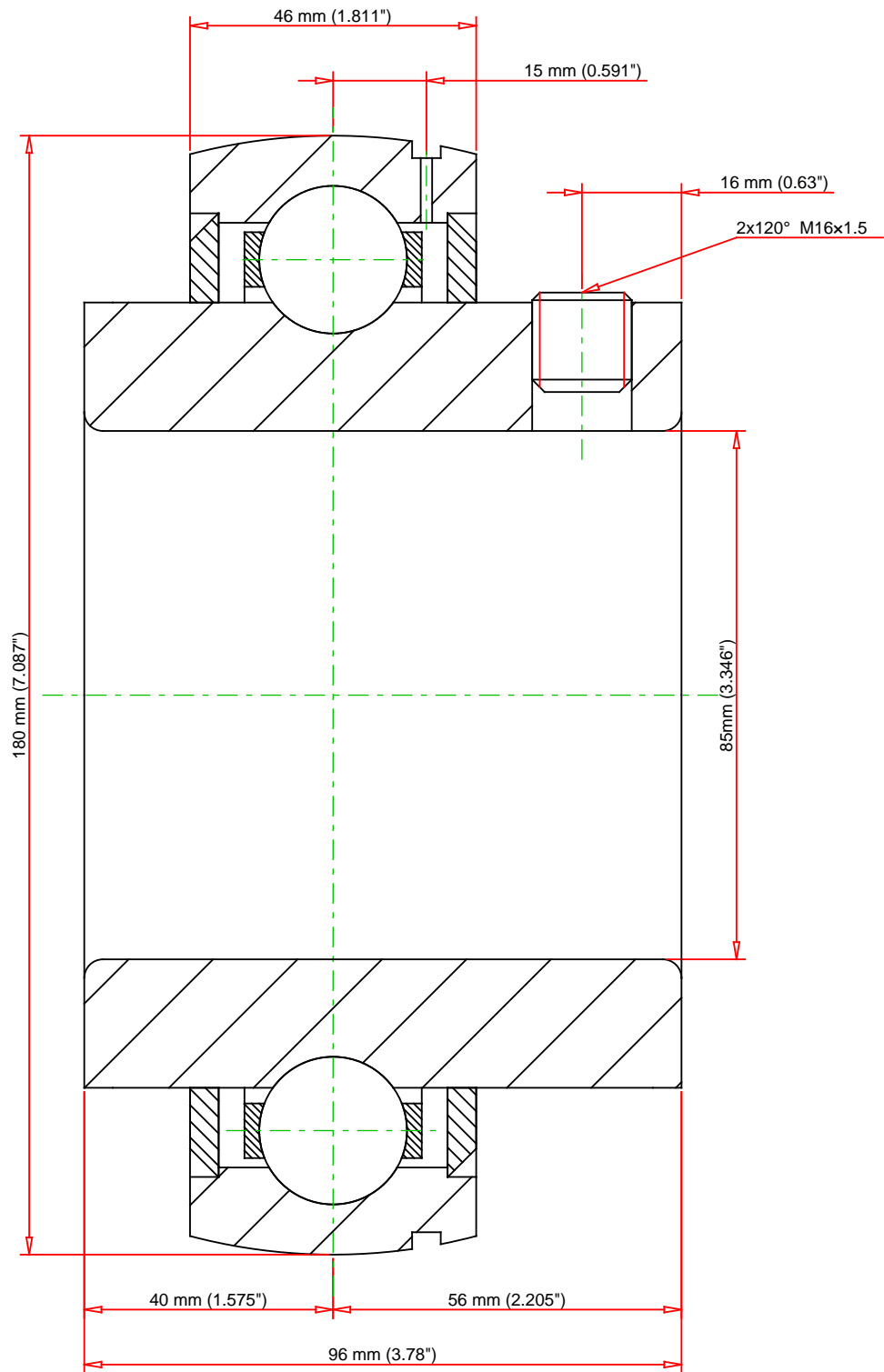
Number of Set Screws 2


Angle between Set Screws 120 °

Basic Load Ratings

Static Load Rating 96800 N
21762 lbf

Dynamic Load Rating 133000 N
29900 lbf



Weight	6.9 lb	3.1 kg		<div>UC317</div> <div>UC 300 Wide Inner Ring Ball Bearings - Set Screw Locking</div>	
					<div>THE TIMKEN COMPANY</div> <div>NORTH CANTON, OHIO USA</div>
			<div>Basic Load Ratings - C_r</div>		
			<div>Load Ratings - C_{0r}</div>	21762 lbf	96800 N
<div>Every reasonable effort has been made to ensure the accuracy of the information contained in this writing, but no liability is accepted for errors, omissions or for any other reason.</div>				<div>FOR DISCUSSION ONLY</div>	