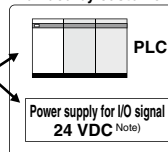


System Construction/General Purpose I/O

●Electric actuator/ Rod type



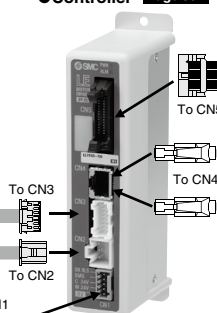
Provided by customer



●I/O cable Pages 384, 397

Controller type	Part no.
LECP6/LECA6	LEC-CN5-□
LECP1 (Programless)	LEC-CK4-□

●Controller* Page 367



Provided by customer

Power supply for controller
24 VDC (Note)

Note) When conformity to UL is required, the electric actuator and controller should be used with a UL1310 Class 2 power supply.

●Power supply plug Page 376 (Accessory) <Applicable cable size> AWG20 (0.5 mm²)

Programless type

LECP1

Page 391

Note) The teaching box, controller setting kit and Touch Operator Interface cannot be connected.

●Touch Operator Interface (Provided by customer)

GP4501T/GP3500T

Manufactured by Digital Electronics Corp.



Cockpit parts can be downloaded free via the Pro-face website. Using cockpit parts makes adjustment from the Touch Operator Interface possible.

●Actuator cable* Pages 382, 396

Controller type	Standard cable	Robotic cable
LECP6 (Step data input type)	LE-CP-□-S	LE-CP-□
LECA6 (Step data input type)	—	LE-CA-□
LECP1 (Programless type)	LE-CP-□-S	LE-CP-□

The * mark: Can be included in the "How to Order" for the actuator.

Option

●Teaching box Page 386

(With 3 m cable)

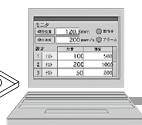
Part no.: LEC-T1-3JG□



●Controller setting kit Page 385

Controller setting kit
(Communication cable, conversion unit and USB cable are included.)
Part no.: LEC-W2

Communication cable● (3 m)



●USB cable (A-miniB type) (0.3 m)

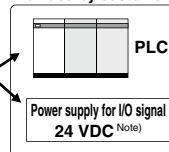
Note) Cannot be used with the programless type (LECP1).

System Construction/Pulse Signal

●Electric actuator/ Rod type

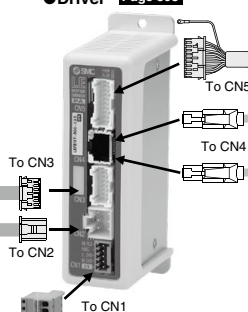


Provided by customer



Note) When conformity to UL is required, the electric actuator and driver should be used with a UL1310 Class 2 power supply.

●Driver* Page 398



●I/O cable Page 404

Driver type	Part no.
LECPA	LEC-CL5-□

Provided by customer

Power supply for driver
24 VDC (Note)

Note) When conformity to UL is required, the electric actuator and driver should be used with a UL1310 Class 2 power supply.

●Power supply plug (Accessory) <Applicable cable size> AWG20 (0.5 mm²)

●Actuator cable* Page 403

Driver type	Standard cable	Robotic cable
LECPA (Pulse input type)	LE-CP-□-S	LE-CP-□

The * mark: Can be included in the "How to Order" for the actuator.

Option

●Teaching box Page 406

(With 3 m cable)
Part no.: LEC-T1-3JG□



●Controller setting software Page 405

Communication cable (With conversion unit) and USB cable are included.
Part no.: LEC-W2



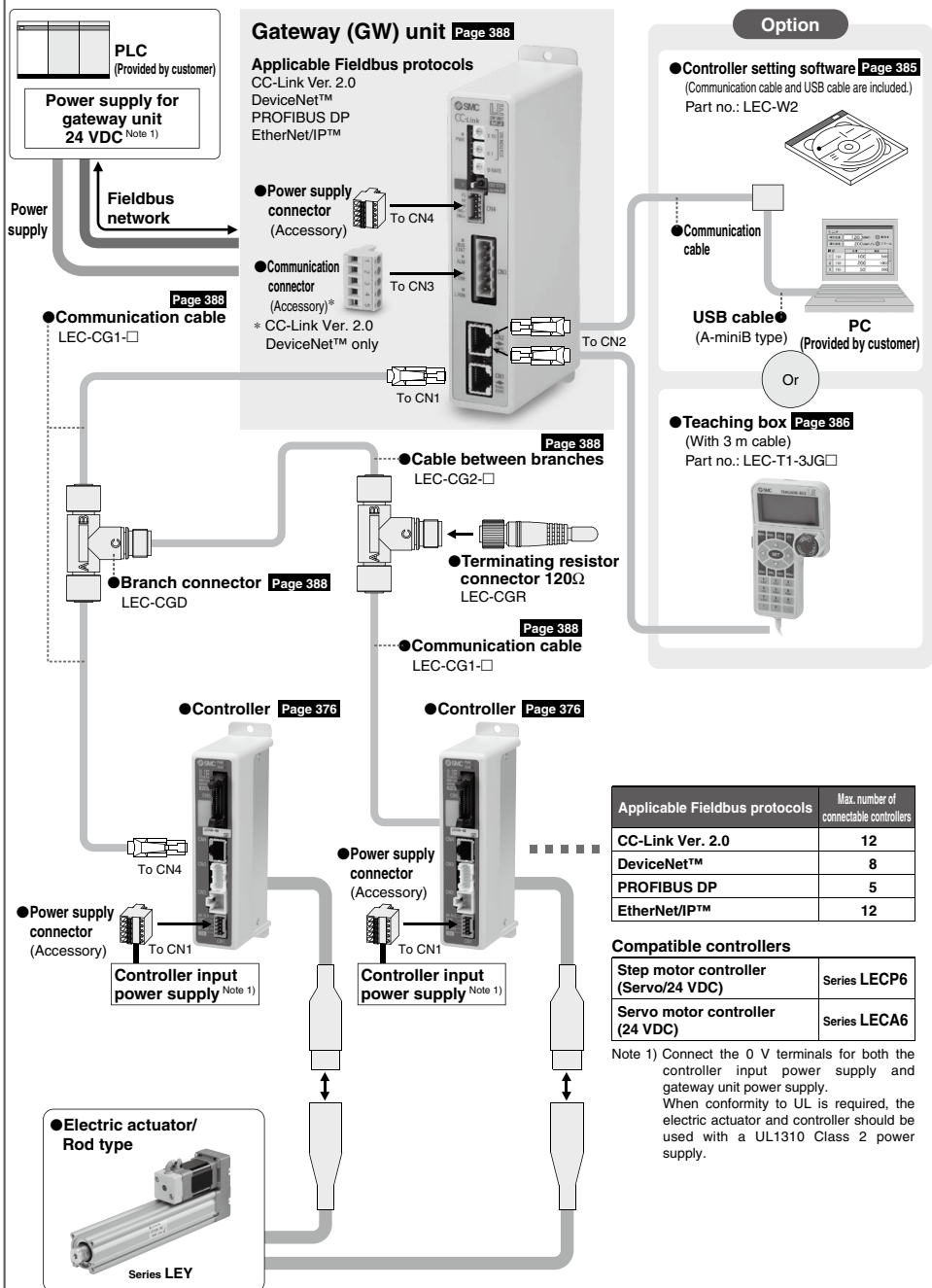
Communication cable●



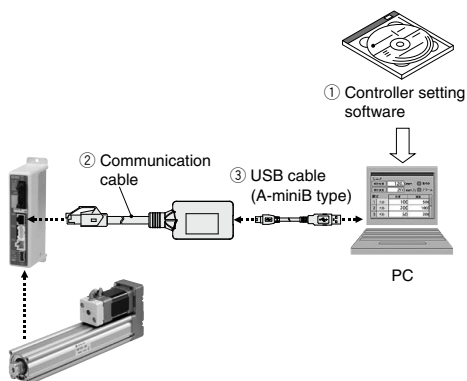
PC

●USB cable
(A-miniB type)

System Construction/Fieldbus Network



Controller Setting Kit/LEC-W2



How to Order

LEC-W2

Controller setting kit
(Japanese and English are available.)

Contents

- ① Controller setting software (CD-ROM)
- ② Communication cable
- ③ USB cable
(Cable between the PC and the conversion unit)

Compatible Controllers/Driver

Step motor controller (Servo/24 VDC)	Series LEC66
Servo motor controller (24 VDC)	Series LECA6
Step motor driver (Pulse input type)	Series LEC6A

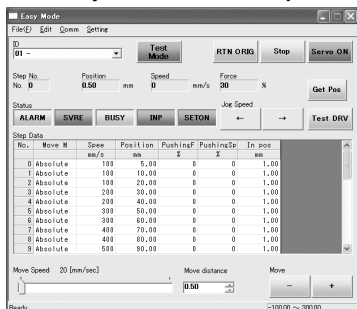
Hardware Requirements

OS	IBM PC/AT compatible machine running Windows®XP (32-bit), Windows®7 (32-bit and 64-bit).
Communication interface	USB 1.1 or USB 2.0 ports
Display	XGA (1024 x 768) or more

* Windows® and Windows®7 are registered trademarks of Microsoft Corporation in the United States.
* Refer to SMC website for version update information, <http://www.smcworld.com>

Screen Example

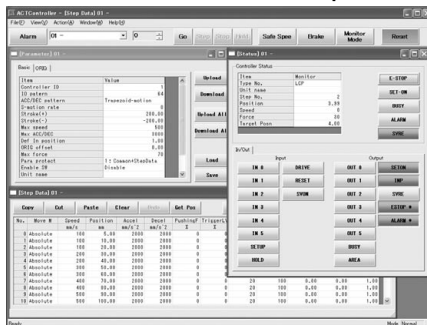
Easy mode screen example



Easy operation and simple setting

- Allowing to set and display actuator step data such as position, speed, force, etc.
- Setting of step data and testing of the drive can be performed on the same page.
- Can be used to jog and move at a constant rate.

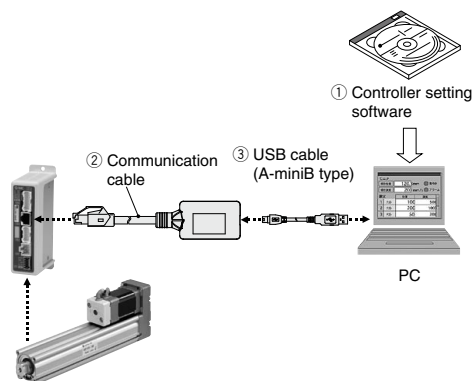
Normal mode screen example



Detailed setting

- Step data can be set in detail.
- Signals and terminal status can be monitored.
- Parameters can be set.
- JOG and constant rate movement, return to origin, test operation and testing of forced output can be performed.

Controller Setting Kit/LEC-W2



How to Order

LEC-W2

Controller setting kit
(Japanese and English are available.)

Contents

- ① Controller setting software (CD-ROM)
- ② Communication cable
- ③ USB cable
(Cable between the PC and the conversion unit)

Compatible Controllers/Driver

Step motor controller (Servo/24 VDC)	Series LECP6
Servo motor controller (24 VDC)	Series LECA6
Step motor driver (Pulse input type)	Series LECPA

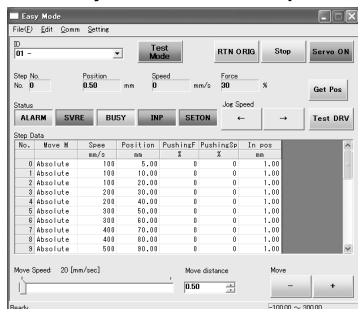
Hardware Requirements

OS	IBM PC/AT compatible machine running Windows®XP (32-bit), Windows®7 (32-bit and 64-bit).
Communication interface	USB 1.1 or USB 2.0 ports
Display	XGA (1024 x 768) or more

* Windows® and Windows®7 are registered trademarks of Microsoft Corporation in the United States.
* Refer to SMC website for version update information, <http://www.smcworld.com>

Screen Example

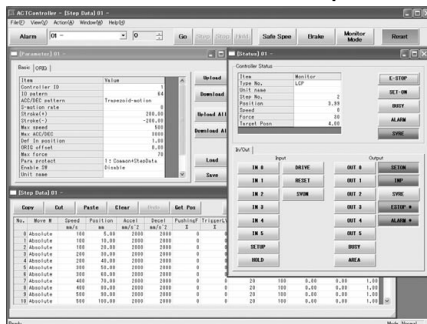
Easy mode screen example



Easy operation and simple setting

- Allowing to set and display actuator step data such as position, speed, force, etc.
- Setting of step data and testing of the drive can be performed on the same page.
- Can be used to jog and move at a constant rate.

Normal mode screen example



Detailed setting

- Step data can be set in detail.
- Signals and terminal status can be monitored.
- Parameters can be set.
- JOG and constant rate movement, return to origin, test operation and testing of forced output can be performed.