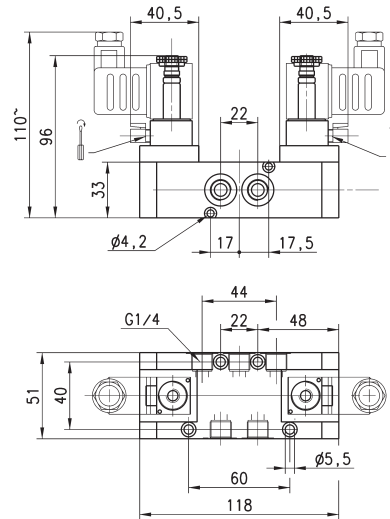
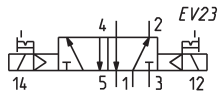


5/2-way solenoid valve, G1/4, bistable - Mod. 454-V11...



These solenoid valves, which have electropneumatic actuation and return, are suitable for operating double-acting cylinders.

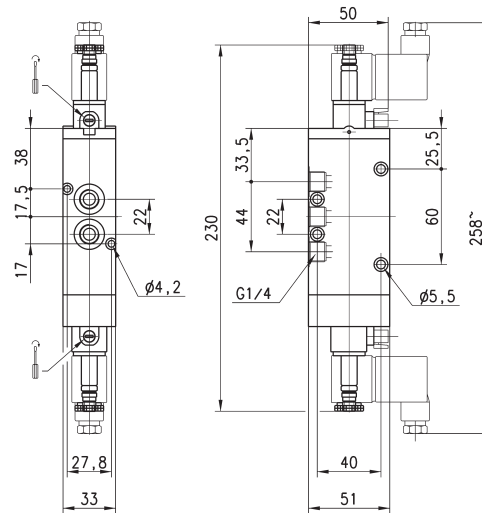
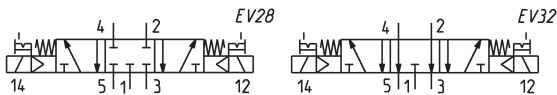


Mod.	Function	Flow rate Qn (l/min)	Operating pressure (bar)
454-V11-22	5/2	1250	2 ÷ 10

5/3-way solenoid valve, G1/4 - Mod. 464-011... e 474-011...



CC = Centres Closed
CO = Centres Open



Mod.	Function	Flow rate Qn (l/min)	Operating pressure (bar)	Symbol
464-011-22	5/3 CC	1250	2.5 ÷ 10	EV28
474-011-22	5/3 CO	1250	2.5 ÷ 10	EV32