

# Pin Cylinder: Single Acting, Spring Return

## Series CJP

ø4, ø6, ø10, ø15

### A short stroke miniature cylinder with a shorter overall length.

The installation space can be significantly reduced because this cylinder can be recessed directly into a machine body or installed on a panel. Thus, the machine can be made more compact.

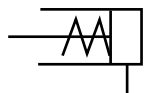


Embedded type

Panel mount type

#### JIS Symbol

Single acting, Spring return

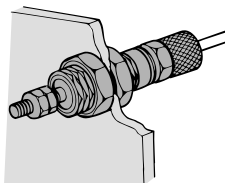


**Made to Order (ø6 to ø15)**  
(For details, refer to page 1459, 1462.)

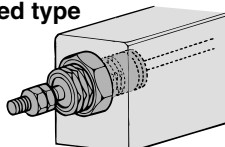
Symbol	Specifications
XC17	Pin cylinder with rod quenched
XC22	Fluororubber seals

### Mounting

#### Panel mount type



#### Embedded type



### How to Order

**CJP B 10 - 15 H4 -**

**Pin cylinder**

**Mounting**

B	Panel mount type
S	Embedded type

**Bore size**

4	4 mm
6	6 mm
10	10 mm
15	15 mm

**Cylinder standard stroke (mm)**

ø4, ø6, ø10, ø15	5, 10, 15
------------------	-----------

**Made to Order**  
Refer to the table below.

**Rod end thread**

Nil	With thread
B	Without thread

**Hose nipple**  
(Applicable to the mounting type B panel mount type (ø6 to ø15) only.)  
(Hose nipple is not attached to embedded style.)

Nil	Without hose nipple *
H4	For ø4/ø2.5 tubing
H6	For ø6/ø4 tubing

\* Refer to caution on piping on page 38.

### Specifications

<b>Action</b>		Single acting, Spring return	
<b>Maximum operating pressure</b>		0.7 MPa	
<b>Minimum operating pressure</b>	ø4	0.3 MPa	
	ø6	0.2 MPa	
	ø10, ø15	0.15 MPa	
<b>Proof pressure</b>		1 MPa	
<b>Ambient and fluid temperature</b>		-10 to 70°C (No freezing)	
<b>Lubrication</b>		Not required (Non-lube)	
<b>Piston speed</b>		50 to 500 mm/s	
<b>Cushion</b>		None	
<b>Stroke length tolerance</b>		+1.0 0	
<b>Rod end style</b>		With thread/Without thread	
<b>Mounting</b>		Panel mount type	Embedded type
<b>Accessory (Standard equipment)</b>	<b>Standard equipment</b>	Mounting nut (2) Rod end nut (2) *	Mounting nut (1) Gasket (1) Rod end nut (2) *
	<b>Option</b>	Hose nipple (Except ø4)	—

\* When rod end is threaded.

### Application Examples

