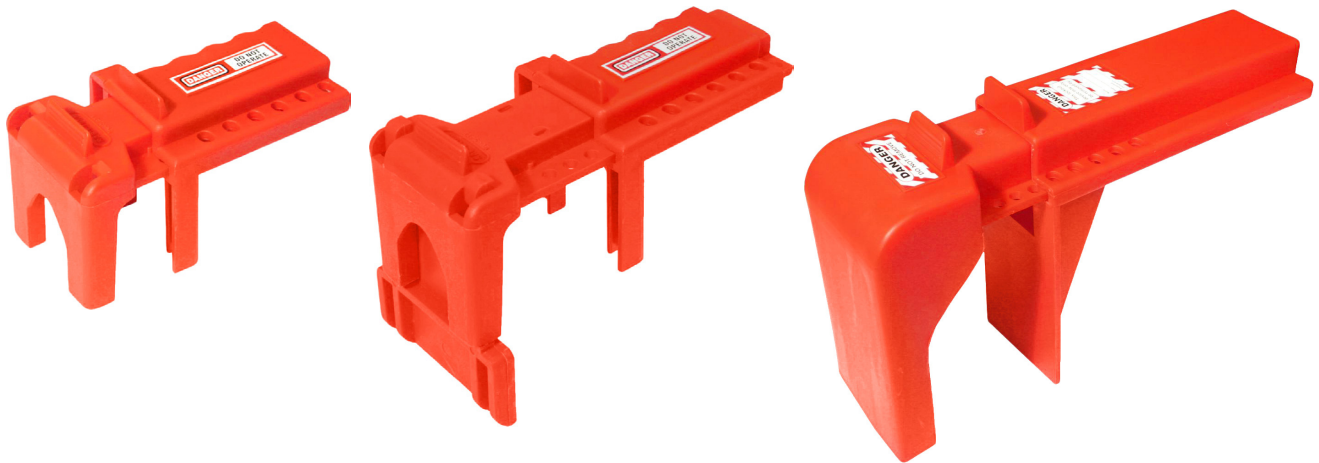


# BALL VALVE LOCKOUT TECHNICAL DATA SHEET

# Spartex



This Lockout device is placed over the top of the ball valve to prevent the valve handle from being turned. Once in the correct isolated position, the handle of the valve is trapped within the body of the Lockout, preventing the handle from being operated.

## Benefits of Ball Valve Lockouts:

- Resistant to cracking & abrasion
- Di-electric properties
- Adjustable
- Resistant to extreme temperatures
- Suitable for hasps and padlocks
- Available in 3 sizes

## Product Specification

Description: Ball Valve Lockout  
Colours: Red

Size:

| Millimetres | Code   |
|-------------|--------|
| 9.5 - 31mm  | LOK023 |
| 32 - 63mm   | LOK024 |
| 50 - 203mm  | LOK025 |

## How To Use



**Step 1:** Turn the valve handle to the correct position - either on or off.



**Step 2:** Lockout the device by placing the main body over the top of the valve handle. Ensure the valve handle sits inside channel.



**Step 3:** Move slider section down the shaft of the Lockout until tight against the valve body.



**Step 4:** Insert a padlock or hasp through the most appropriate hole which keeps the slider secure.

## Alternate products:

Contact us for more Lockout Tagout products.



Retractable Cable Lockout |



Retractable Cable Lockout | LOK018

SPARTEX, exclusively available from Rubix, Europe's largest supplier of industrial products.  
All your essentials covered with guaranteed availability for any European site, at a quality that gets the job done.  
With branches nationwide we're just down the road.

Call **0870 240 2100** from a landline to be transferred to your nearest branch  
or visit **uk.rubix.com** to search for your nearest branch and their contact details