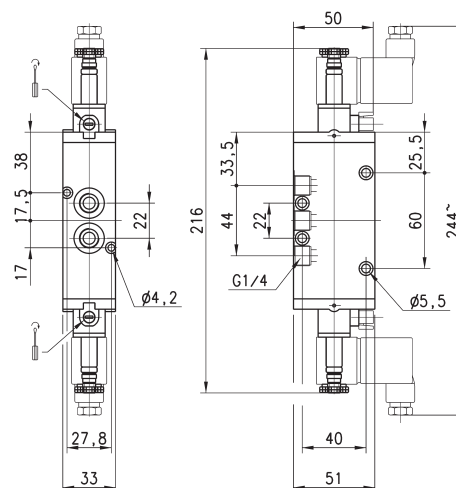
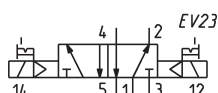


5/2-way solenoid valve, G1/4, bistable - Mod. 454-011...



These solenoid valves, which have electropneumatic actuation and return, are suitable for operating double-acting cylinders.

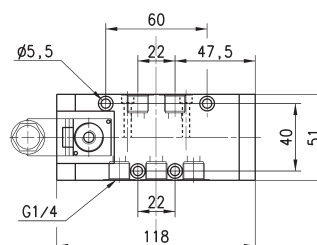
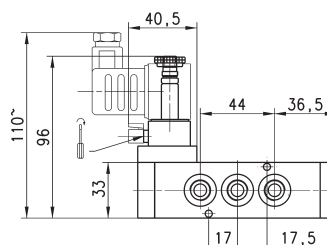


Mod.	Function	Flow rate Qn (l/min)	Operating pressure (bar)
454-011-22	5/2	1250	2 ÷ 10

5/2-way solenoid valve, G1/4, monostable - Mod. 454-V...



These solenoid valves, which have electropneumatic actuation and spring or pneumatic spring return are suitable for operating double-acting cylinders.



Mod.	Function	Flow rate Qn (l/min)	Operating pressure (bar)	Symbol
454-V15-22	5/2	1250	2.5 ÷ 10	EV18
454-V16-22	5/2	1250	2.5 ÷ 10	EV21