

CLASSIC RANGE

IMPACT CYLINDERS Martonair M/3000

Double Acting – 2 ... 6" diameter



High energy output

Ideally suited to a wide range of marking, piercing and light presswork applications

Rugged, corrosion-resistant construction

TECHNICAL DATA

Operating pressure:

2,7 ... 10 bar

Operating temperature:

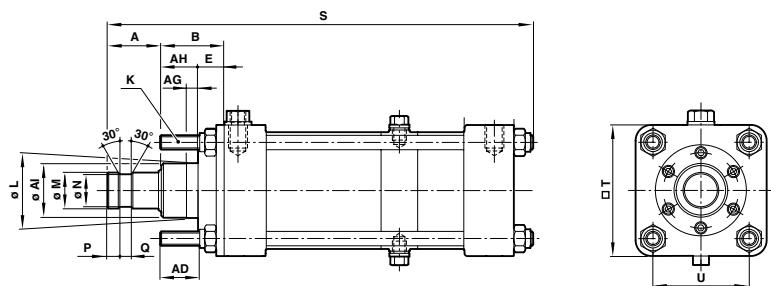
-20°C ... +80°C

For use below +5°C consult IMI Precision Engineering technical sales.

Mounting position:

Vertical

For all applications complete guarding must be incorporated, either fixed or interlocked with the control circuit. For further information consult IMI Precision Engineering technical sales. An Impact Cylinder gives an output rated in energy i.e. thrust x distance. This energy is achieved by rapidly accelerating the piston rod and tool assembly over a free stroke of approximately 65 mm, before contacting the work. The rapid acceleration is produced by the differential area arrangement which quickly exposes the full area of the piston to high pressure air built up in the reservoir at rear end of the cylinder.



Dimensions

Dia. Ø	A	AD	Ø AI	AG	AH	B	E	K	Ø L	Ø M	Ø N	P	Q	S	T	U
2"	37,5	17	31,5	8	20,5	35	14,3	M 8	31,72/31,67	20	17,5	9,5	6	461	63,5	48
3"	37,5	27,5	37,5	8	25,5	38	12,7	M 10	38,07/38,02	25	23	9	8	506	89	67
4"	44,5	34,5	44	8	31,5	44,5	12,7	M 11	44,42/44,37	32	28,5	11	9,5	516	114	89
6"	63,5	48	69,5	9,5	35	68	15,9	M 16	69,82/69,75	44,5	40,5	19	12,5	587	167	129

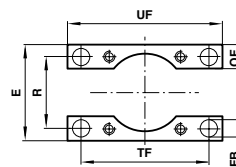
Models

Accessories

Model	Dia. Ø	Energy joules at 5,5 bar	Max. Cycle rate/min	Max. tool weight to be carried	Port size	Piston rod dia. Ø	Straight fitting	Elbow fitting	Service kit
M/3020M	2"	24,5	60	3,6kg	G 1/4	20,0	C02250628	C02470628	QM/3020/00
M/3030M	3"	63,0	50	9,0kg	G 3/8	25,0	C02250838	C02470838	QM/3030/00
M/3040M	4"	125,5	40	15,8kg	G 3/8	32,0	C02251038	C02471038	QM/3040/00
M/3060	6"	253,0	35	36,2kg	G 1/2	44,5	C02251248	C02471248	QM/3060/00



Mountings



Dimensions

Dia. Ø	B, G	Dia. Ø	E	FB	OF	R	TF	UF
2"	QM/871	2"	64	9	16	47,5	86	104
3"	QM/984	3"	114	11	25	66,5	112	134
4"	QM/987	4"	121	14	32	89	146	178
6"	QM/990	6"	114	17	40	128,5	204	242

For further information, visit store.norgren.com and use the new improved search function. If you cannot see the option you require contact your Express Team.