

Rotary Actuator with Angle Adjuster Free-Mounting Type


Series CRBU2WU

Sizes: 10, 15, 20, 30, 40

How to Order

Standard

CRBU2 W U **10** — **180** **S**



With auto switch
Sizes: 10, 15

CDRBU2 W U **10** — **180** **S** — **90** [] []

With auto switch
Sizes: 20, 30, 40

CDRBU2 W U **20** — **180** **S** — **R73** [] []

With auto switch
(With switch unit)

Free-mounting

With angle adjuster

Rotation

Number of auto switches

S	1 pc.*
Nil	2 pcs.

* Right-hand auto switch will be used for actuators with 1 auto switch.

Electrical entry/Lead wire length

Nil	Grommet, Lead wire: 0.5m
L	Grommet, Lead wire: 3m
C	Grommet, Lead wire: 0.5m
CL	Grommet, Lead wire: 3m
CN	Grommet, Without lead wire

Notes) Connectors are available only for auto switch types D-R73, D-R80, D-T79.

Part numbers for lead wires with connectors, and their respective wire length in (), are: D-LC05 (0.5m); D-LC30 (3m); D-LC50 (5m)

Vane type

S	Single vane
D	Double vane

Auto switch type

Nil	Without auto switch
-----	---------------------

* Select applicable auto switches from the table below.

Vane type

Vane type	Symbol	Rotation
Single vane	90	90°
	180	180°
	270	270°
Double vane	90	90°
	100	100°

Size

10
15
20
30
40

Size

10
15

Size

20
30
40

Auto switch specifications: Refer to page 91 for detailed auto switch specifications.

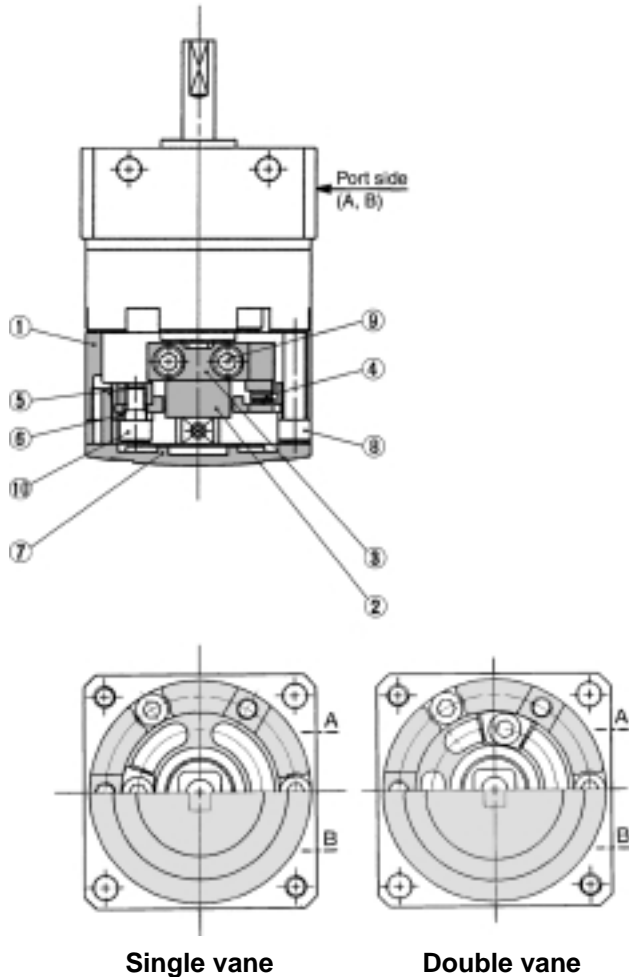
Applicable size	Type	Electrical entry	Indicator light	Wiring (output)	Load voltage		Auto switch part no.	Lead wire type	Lead wire length (m)*				Applicable loads						
					DC	AC			0.5 (Nil)	3 (L)	5 (Z)	None (N)							
For 10 and 15	Reed	Grommet	No	2-wire	24V	5V, 12V	5V, 12V, 24V	90	Parallel cord	●	●	●	—	IC circuit	Relay PLC				
						5V, 12V, 100V	5V, 12V, 24V, 100V	90A	Heavy-duty cord	●	●	●	—						
					Solid state	Grommet	Yes	3-wire (NPN)	24V	—	100V	93A	Heavy-duty cord	●		●	●	—	IC circuit
											—	T99		●		●	—	—	
	Solid state	Grommet	Yes	3-wire (PNP)	24V	—	5V, 12V	T99V	Heavy-duty cord	●	●	—	—	IC circuit					
								S99		●	●	—	—						
								S99V		●	●	—	—						
								S9P		●	●	—	—						
								S9PV		●	●	—	—						
								R73		●	●	—	—						
For 20, 30, and 40	Reed	Grommet	Yes	2-wire	24V	—	100V	Heavy-duty cord	●	●	—	—	IC circuit	Relay PLC					
							48V, 100V		24V, 48V, 100V	R80	●	●			—	—			
							—		—	R80C	●	●			●	●			
							—		—	T79	●	●			—	—			
	Solid state	Grommet	Yes	3-wire (NPN)	24V	—	5V, 12V	T79C	Heavy-duty cord	●	●	●	●		IC circuit				
								S79		●	●	—	—						
								S7P		●	●	—	—						
								—		—	—	—	—						

* Lead wire length symbol 0.5m Nil (Example) R73C 5mZ (Example) R73CZ
3m L (Example) R73CL NoneN (Example) R73CN

Construction: 10, 15, 20, 30, 40

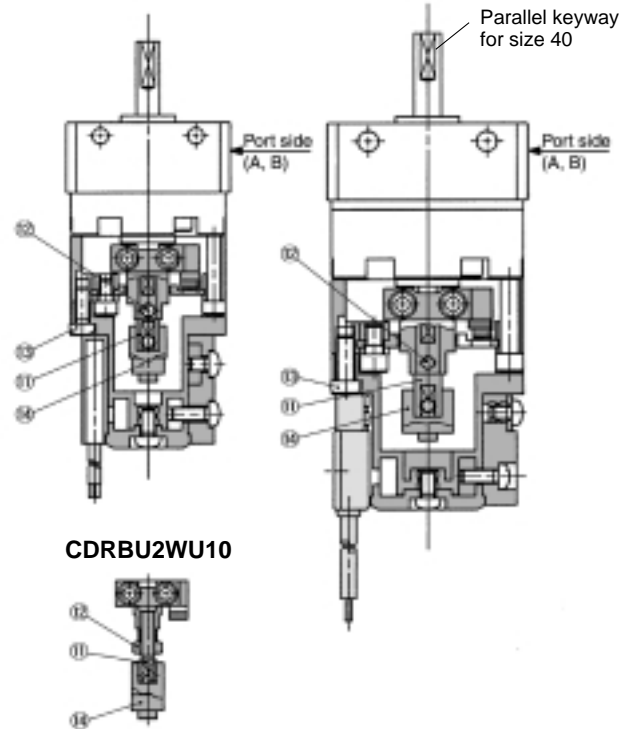
Single vane/Double vane type
With angle adjuster

CRBU2W10, 15, 20, 30, 40-□ $\frac{S}{D}$



With angle adjuster + Auto switch unit

CDRBU2WU10, 15-□ $\frac{S}{D}$ CDRBU2WU20, 30, 40-□ $\frac{S}{D}$



Parts list

No.	Description	Material	Note
1	Stopper ring	Die-cast aluminum	
2	Stopper lever	Carbon steel	
3	Lever retainer	Carbon steel	Zinc chromated
4	Rubber bumper	NBR	
5	Stopper block	Carbon steel	Zinc chromated
6	Block retainer	Carbon steel	Zinc chromated
7	Cap	Resin	
8	Hexagon socket head cap screw	Stainless steel	Special screw
9	Hexagon socket head cap screw	Stainless steel	Special screw
10	Hexagon socket head cap screw	Stainless steel	Special screw
11	Joint	Aluminum alloy	See note below.
12	Hexagon socket head set screw	Stainless steel	Hexagon nut will be used for CDRBU2W10 only.
	Hexagon nut	Stainless steel	
13	Round head Phillips screw	Stainless steel	See note below.
14	Magnet lever	—	See note below.

Note) These items (No. 11, 13, and 14) consist of auto switch unit and angle adjuster. Refer to pages 84 and 85 for detailed specifications.
Stainless steel is used for size 10 only.

- **For single vane type:**
Illustrations above show actuators for 90° and 180° when B port is pressurized.
- **For double vane type:**
Illustrations above show the intermediate rotation position when A or B port is pressurized.

⚠ Specific Product Precautions

Be sure to read before handling.
Refer to pages 104 through 110 for safety instructions, actuator precautions, and auto switch precautions.

Angle Adjuster

⚠ Caution

1. Since the maximum angle of the rotation adjustment range will be limited by the rotation of the rotary actuator itself, make sure to take this into consideration when ordering.

Rotation of the rotary actuator	Rotation adjustment range
270° ⁺⁴ ₀	0° to 230° (Sizes: 10, 40)*
	0° to 240° (Sizes: 15, 20, 30)
180° ⁺⁴ ₀	0° to 175°
90° ⁺⁴ ₀	0° to 85°

* The maximum adjustment angle of the angle adjuster for size 10 and 40 is 230°.

2. Connecting ports are side ports only.
3. The allowable kinetic energy is the same as the specifications of the rotary actuator by itself (i.e., without angle adjuster).
4. Use a 100° rotary actuator if you desire to adjust the angle to 90° using a double vane type.

Free-Mounting Type
CRBU2
CRB1