

40013050. - cubio cupboard

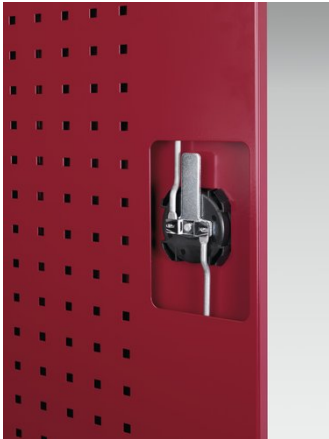
Short Description

cubio cupboard with perfo doors & 3 shelves

WxDxH: 1050x525x1600mm

Product Images





Additional Information

Description	cubio shelf cupboard. Featuring a heavy duty, reinforced steel housing with up to 1 tonne total capacity with double, perfo panel lined, reinforced high doors with 3 adjustable height, galvanised steel shelves (100kg U.D.L.). Finished in durable powder coat paint. WxDxH: 1050x525x1600mm.
Width	1050
Depth	525
Height	1000
Customs tariff number	94032080
Product material	Sheet steel
Product surface	Powder coated
Door type	Perfo
Number of shelves	3

Product Options

Colour:	Anthracite grey
	Crimson red
	Gentian blue
	Light grey