



**The Timken Company**

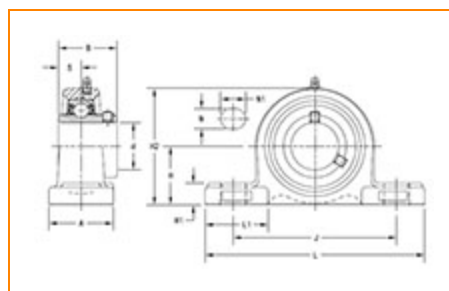
4500 Mt Pleasant St. NW

N. Canton, OH 44720

**Phone:** (234) 262-3000

**E-Mail:** [CustomerCAD@timken.com](mailto:CustomerCAD@timken.com) • **Web site:** [www.timken.com](http://www.timken.com)

## Part Number UCP309, UCP 300 Pillow Block Mounted Bearings - Set Screw Locking



[Specifications](#) | [Dimensions](#) | [Basic Load Ratings](#)

### Specifications

<b>Bearing Number</b>	UC309
<b>Shaft Size d</b>	45 mm
<b>Locking Style</b>	Set Screw Locking
<b>Housing Construction</b>	Two-Bolt Pillow Block

### Dimensions

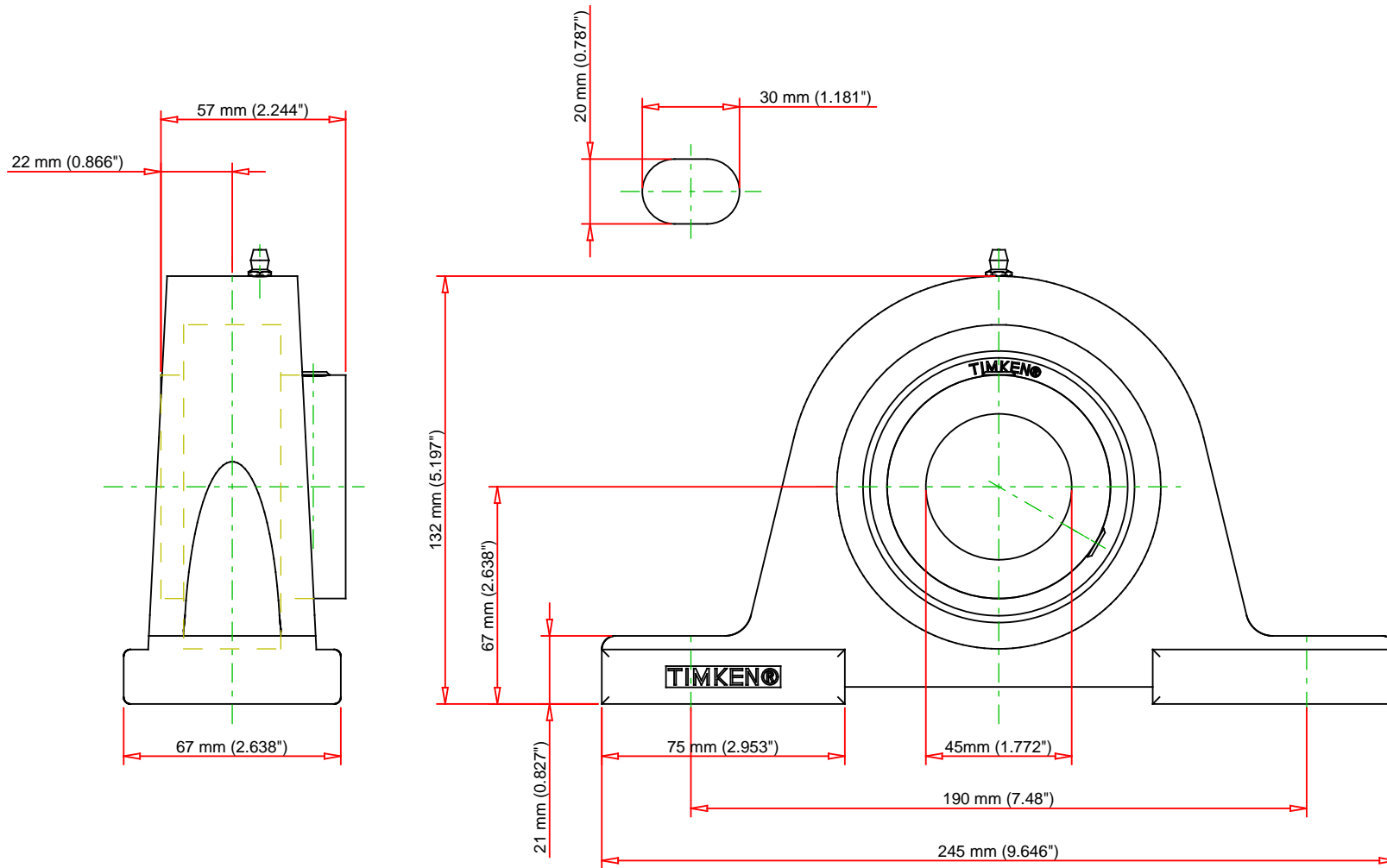
<b>Base to Center Height H</b>	67 mm 2.638 in
<b>Total Length L</b>	245 mm 9.646 in
<b>Housing Width A</b>	67 mm 2.638 in
<b>Bolt Hole Spacing J</b>	190 mm 7.48 in



<b>Bolt Hole Size N</b>	20 mm 0.787 in
<b>Bolt Hole Length N1</b>	30 mm 1.181 in
<b>Foot Height H1</b>	21 mm
<b>Total Height H2</b>	132 mm 5.197 in
<b>Dimension L1</b>	75 mm 2.953 in
<b>Inner Ring Width B</b>	57 mm 2.244 in
<b>Center of Bearing from End S</b>	22 mm 0.866 in

## Basic Load Ratings

<b>Static Load Rating</b>	29500 N 6632 lbf
<b>Dynamic Load Rating</b>	48900 N 10993 lbf



Bearing Number	UC309			
Load Ratings - C <sub>r</sub>	10993	lbf	48900	N
Load Ratings - C <sub>0r</sub>	6632	lbf	29500	N
Weight	10.8	lb	4.9	kg
Bolt Size	M14			

**TIMKEN**

THE TIMKEN COMPANY  
NORTH CANTON, OHIO USA

**UCP309**

UCP 300 Pillow Block Mounted Bearings -  
Set Screw Locking

Every reasonable effort has been made to ensure the accuracy of the information contained in this writing, but no liability is accepted for errors, omissions or for any other reason.

**FOR DISCUSSION ONLY**