



The Timken Company

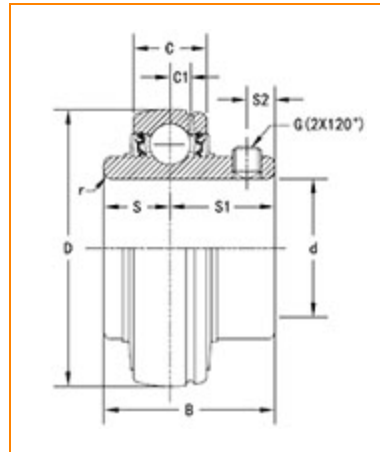
4500 Mt Pleasant St. NW

N. Canton, OH 44720

Phone: (234) 262-3000

E-Mail: CustomerCAD@timken.com • **Web site:** www.timken.com

Part Number UC314, UC 300 Wide Inner Ring Ball Bearings - Set Screw Locking



[Specifications](#) | [Dimensions](#) | [Basic Load Ratings](#)

Specifications

Bore Type	Cylindrical bore
Bearing Type	Ball Bearing
Shaft Size d	70 mm
Material	Bearing Steel
Locking Device	Set Screw Locking

Dimensions

Outside Diameter D	150 mm 5.906 in
---------------------------	--------------------



Outside Ring Width C 40 mm
1.575 in

Radius r 2.1 mm
0.083 in

Groove Position C1 12.5 mm
0.492 in

Center of Bearing from End S 33 mm
1.299 in

Dimension S1 45 mm
1.772 in

Set Screw Distance S2 12 mm
0.472 in

Set Screw Size M12×1.5

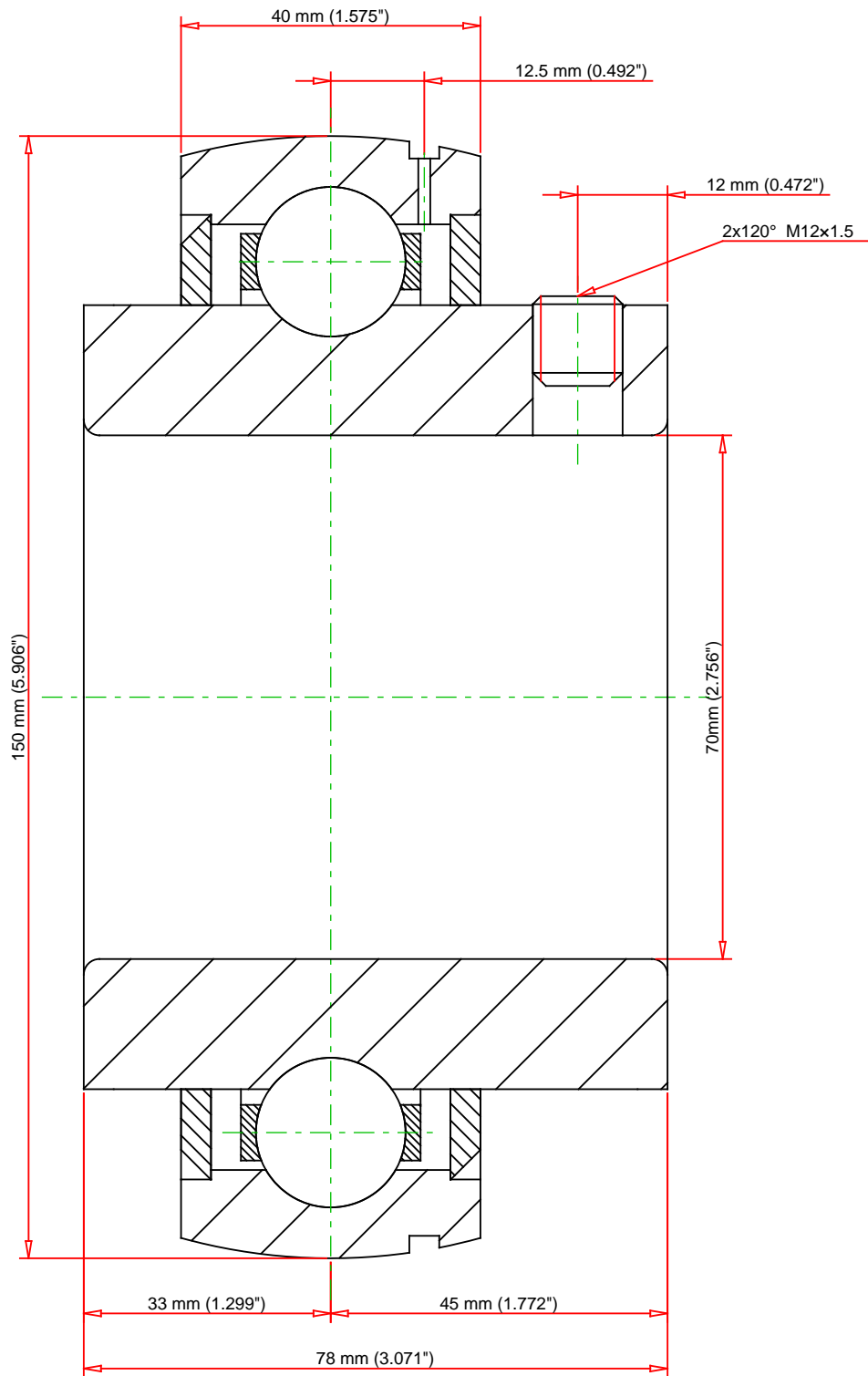
Number of Set Screws 2

Angle between Set Screws 120 °

Basic Load Ratings

Static Load Rating 68200 N
15332 lbf

Dynamic Load Rating 104000 N
23380 lbf



Weight	3.9 lb	1.8 kg	<div>TIMKEN®</div> <div>THE TIMKEN COMPANY</div> <div>NORTH CANTON, OHIO USA</div>			<div>UC314</div> <div>UC 300 Wide Inner Ring Ball Bearings - Set Screw Locking</div>		
						Basic Load Ratings - C _r		23380 lbf
			Load Ratings - C _{0r}		15332 lbf	68200 N		
Every reasonable effort has been made to ensure the accuracy of the information contained in this writing, but no liability is accepted for errors, omissions or for any other reason.						FOR DISCUSSION ONLY		