

Double-throttle check valves from the Parker series FM are in sandwich design for easy configuration of stack systems. Throttle and check valves are located in ports A and B.

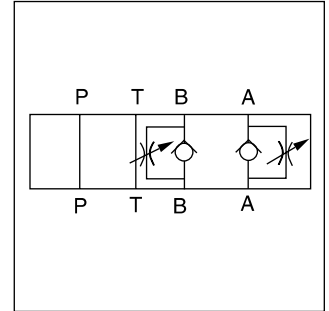
FM2 and FM3 can be used as meter-in or meter-out throttle by changing the mounting position.

FM4 can be selected by ordering code as meter-in or meter-out throttle. FM6 is only available as meter-out control.

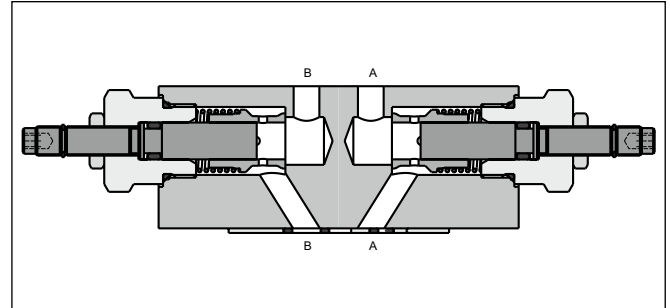
The throttle check valve can also be used to influence the switching time of pilot operated directional valves. In this case, the valve is positioned between the pilot stage (CETOP 03, NG06) and the main stage (CETOP 05, NG10 up to CETOP 10, NG32).

Features

- The metering needle design allows a very wide range of flows to be suitable for all applications, from very sensitive adjustments of low flow up to maximum flow.
- Large bypass check valves allow high flow at low pressure drop.
- NG06 - FM2 (CETOP 03)
NG10 - FM3 (CETOP 05)
NG16 - FM4 (CETOP 07)
NG25 - FM6 (CETOP 08)

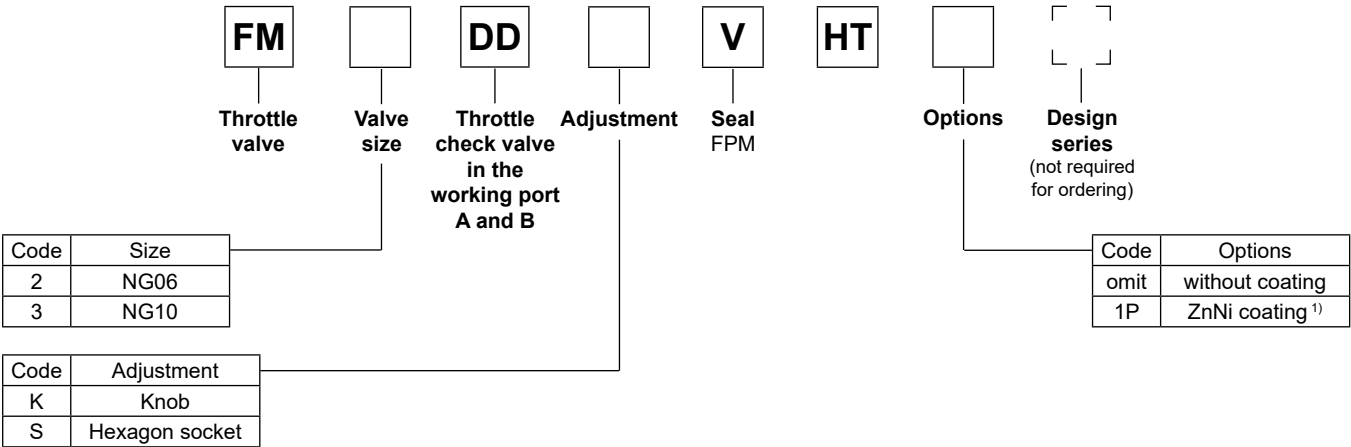


FM3

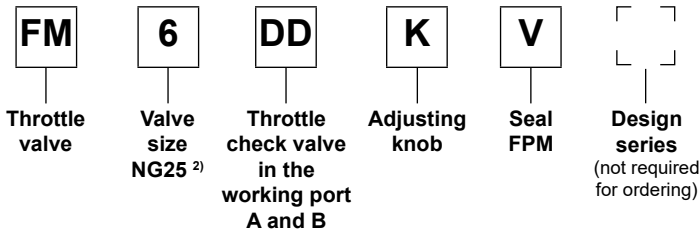
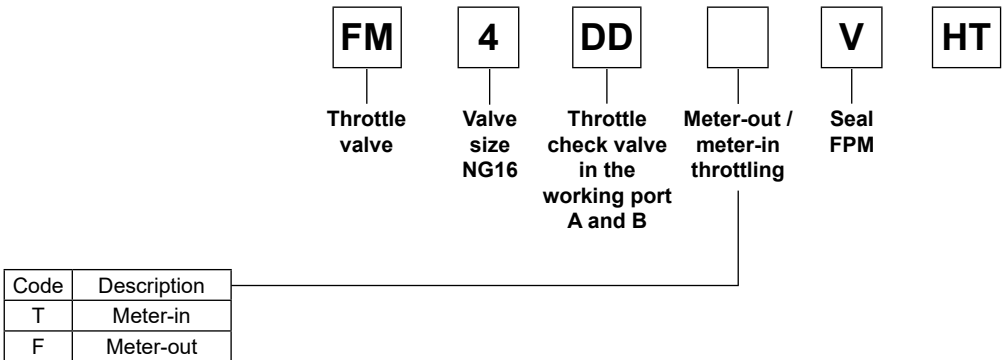


Technical data

General					
Series		FM2	FM3	FM4	FM6
Size		NG06	NG10	NG16	NG25
Mounting interface		NFPA D03 CETOP 03	NFPA D05 CETOP 05	NFPA D07 CETOP07	NFPA D08 CETOP 08
Mounting position		unrestricted			
Ambient temperature	[°C]	-20...+70			
MTTF _D value	[years]	150			
Weight	[kg]	1.3	2.9	5.4	7.9
Hydraulic					
Max. operating pressure	[bar]	350	350	350	210
Max. Flow	[l/min]	80	160	200	341
Opening pressure	[bar]	0.5	0.5	0.3	0.3
Meter-in throttle		•	•	•	—
Meter-out throttle		•	•	•	•
Fluid		Hydraulic oil according to DIN 51524			
Fluid temperature	[°C]	-20...+70			
Viscosity	permitted	20...400			
	recommended	30...80			
Filtration		ISO 4406; 18/16/13			



7



¹⁾ On request.

²⁾ Only meter-out available.