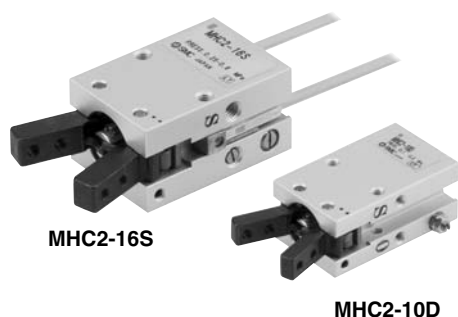


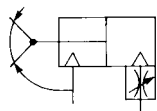
# Series MHC2

- A large amount of gripping force is provided through the use of a double piston mechanism, while maintaining a compact design.
- Built-in variable throttle
- A solid state auto switch with an indicator light can be mounted.

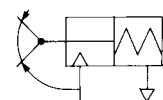


## JIS Symbol

Double acting



Single acting



**Made to Order**

(Refer to page 683 to 713 for details.)

Symbol	Specifications/Description
-X4	Heat resistance (100°C)
-X5	Fluororubber seal
-X50	Without magnet
-X53	EPDM seal/Fluorine grease
-X56	Axial Ported
-X63	Fluorine grease
-X64	Finger: Side tapped mounting
-X65	Finger: Through-hole mounting
-X79	Grease for food

## Specifications

Fluid	Air	
Operating pressure	Double acting	0.1 to 0.6 MPa
	Single acting	0.25 to 0.6 MPa
Ambient and fluid temperature	-10 to 60°C	
Repeatability	±0.01 mm	
Max. operating frequency	180 c.p.m	
Lubrication	Not required	
Action	Double acting, Single acting	
Auto switch (Option) <small>Note)</small>	Solid state auto switch (3-wire, 2-wire)	



Note) Refer to pages 761 to 809 for further information on auto switches.

## Model

Action	Model	Bore size (mm)	Gripping moment (N·m) (Effective value) <sup>(1)</sup>	Opening/closing angle (Both sides)	Mass <sup>(2)</sup> (g)
Double acting	MHC2-10D	10	0.10	30° to -10°	39
	MHC2-16D	16	0.39		91
	MHC2-20D	20	0.70		180
	MHC2-25D	25	1.36		311
Single acting	MHC2-10S	10	0.070	30° to -10°	39
	MHC2-16S	16	0.31		92
	MHC2-20S	20	0.54		183
	MHC2-25S	25	1.08		316



Note 1) At the pressure of 0.5 MPa.

Refer to "Effective Gripping Force" data on page 635 for gripping force of each gripping point.

Note 2) Except auto switch.