



The Timken Company

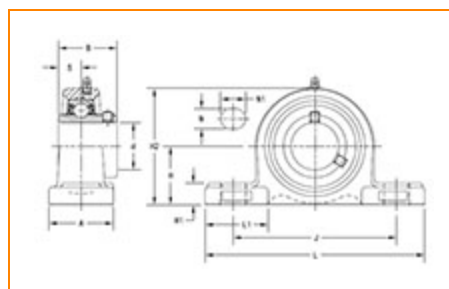
4500 Mt Pleasant St. NW

N. Canton, OH 44720

Phone: (234) 262-3000

E-Mail: CustomerCAD@timken.com • **Web site:** www.timken.com

Part Number UCP308, UCP 300 Pillow Block Mounted Bearings - Set Screw Locking



[Specifications](#) | [Dimensions](#) | [Basic Load Ratings](#)

Specifications

Bearing Number	UC308
Shaft Size d	40 mm
Locking Style	Set Screw Locking
Housing Construction	Two-Bolt Pillow Block

Dimensions

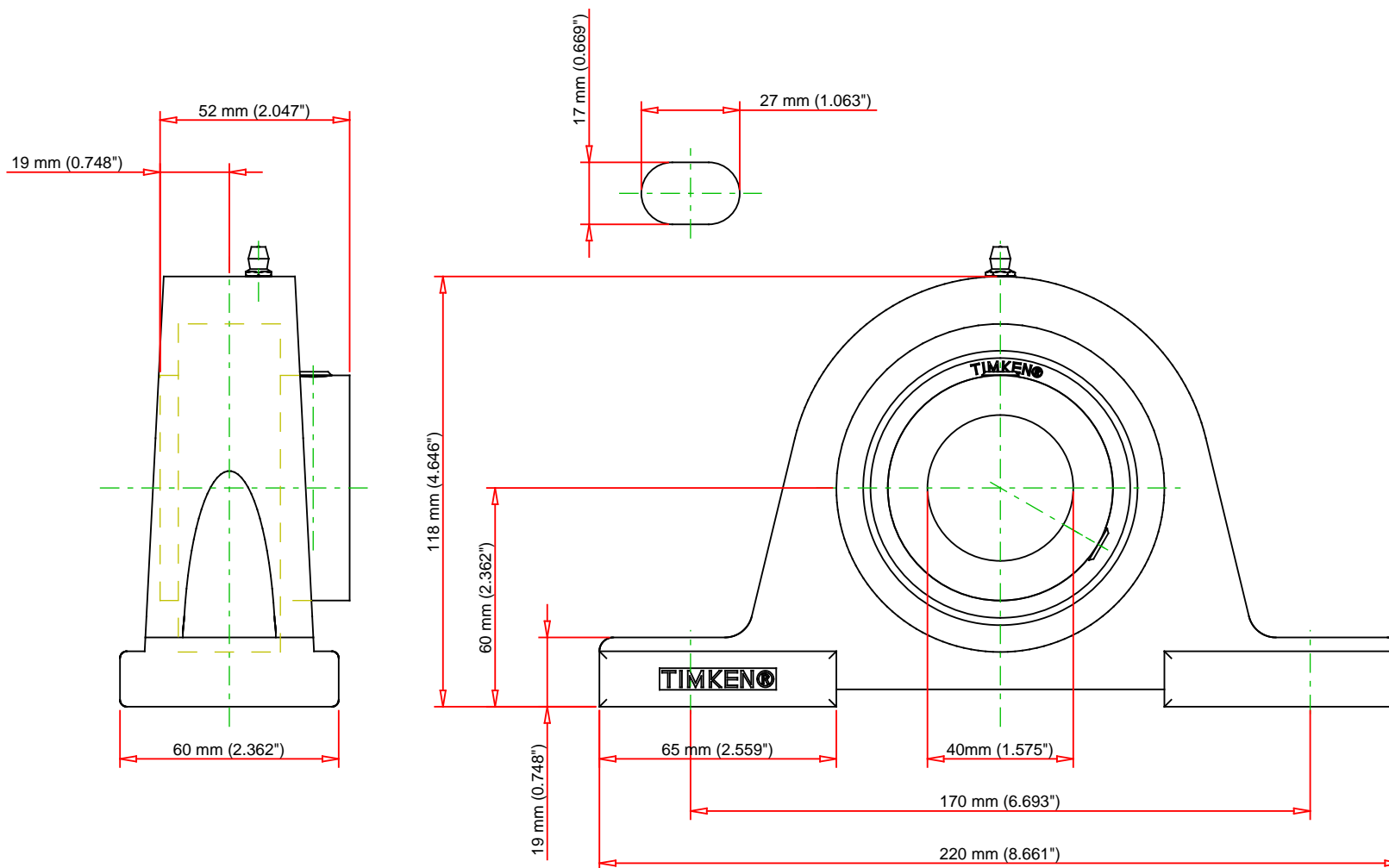
Base to Center Height H	60 mm 2.362 in
Total Length L	220 mm 8.661 in
Housing Width A	60.000 mm 2.362 in
Bolt Hole Spacing J	170 mm 6.693 in



Bolt Hole Size N	17 mm 0.669 in
Bolt Hole Length N1	27 mm 1.063 in
Foot Height H1	19 mm
Total Height H2	118 mm 4.646 in
Dimension L1	65 mm 2.559 in
Inner Ring Width B	52 mm 2.047 in
Center of Bearing from End S	19 mm 0.748 in

Basic Load Ratings

Static Load Rating	24000 N 5395 lbf
Dynamic Load Rating	40700 N 9150 lbf



Bearing Number	UC308			
Load Ratings - C _r	9150	lbf	40700	N
Load Ratings - C _{0r}	5395	lbf	24000	N
Weight	8.4	lb	3.8	kg
Bolt Size	M14			

TIMKEN

THE TIMKEN COMPANY
NORTH CANTON, OHIO USA

UCP308

UCP 300 Pillow Block Mounted Bearings -
Set Screw Locking

Every reasonable effort has been made to ensure the accuracy of the information contained in this writing, but no liability is accepted for errors, omissions or for any other reason.

FOR DISCUSSION ONLY