

# Free Mount Cylinder Double Acting, Single Rod Series *CU*

ø6, ø10, ø16, ø20, ø25, ø32

## How to Order

**CU 6 - 30 D -**

**With auto switch** **CDU 6 - 30 D - M9BW -**

**Built-in magnet**

**Bore size**

6	6 mm
10	10 mm
16	16 mm
20	20 mm
25	25 mm
32	32 mm

**Port thread type**

Symbol	Type	Bore size
Nil	M5 x 0.8	ø6, ø10, ø16, ø20, ø25
	Rc 1/8	ø32
TN	NPT 1/8	ø32
TF	G 1/8	ø32

**Action**

D	Double acting
---	---------------

**Standard stroke (mm)**

ø6, ø10, ø16	5, 10, 15, 20, 25, 30
ø20, ø25, ø32	5, 10, 15, 20, 25, 30, 40, 50

**Auto switch**

Nil	Without auto switch
-----	---------------------

**Number of auto switches**

Nil	2 pcs.
S	1 pc.

**Made to order**  
\* Refer to page 484 for the Made to Order specifications.

**Built-in Magnet Cylinder Model**  
If a built-in magnet cylinder without an auto switch is required, there is no need to enter the symbol for the auto switch.  
(Example): CDU20-25D

## Applicable Auto Switches/Refer to pages 1263 to 1371 for further information on auto switches.

Type	Special function	Electrical entry	Indicator light	Wiring (Output)	Load voltage		Auto switch model		Lead wire length (m)				Pre-wired connector	Applicable load		
					DC	AC	Perpendicular	In-line	0.5 (Nil)	1 (M)	3 (L)	5 (Z)				
Solid state switch	—	Grommet	Yes	3-wire (NPN)	24 V	5 V, 12 V	—	M9NV	M9N	●	●	●	○	○	IC circuit	Relay, PLC
	3-wire (PNP)			M9PV				M9P	●	●	●	○	○			
	2-wire			M9BV				M9B	●	●	●	○	○			
	3-wire (NPN)			5 V, 12 V		M9NWV		M9NW	●	●	●	○	○	IC circuit		
	3-wire (PNP)					M9PWV		M9PW	●	●	●	○	○			
	2-wire					M9BWW		M9BW	●	●	●	○	○		—	
Reed switch	—	Grommet	Yes	3-wire (NPN equivalent)	—	5 V	—	A96V	A96	●	—	●	—	—	IC circuit	—
				2-wire	24 V	12 V	100 V	A93V	A93	●	—	●	—	—	—	—
			No	2-wire	100 V or less	A90V	A90	●	—	●	—	—	—	—	IC circuit	

\* Lead wire length symbols: 0.5 m ..... Nil (Example) M9NW  
1 m ..... M (Example) M9NWM  
3 m ..... L (Example) M9NWL  
5 m ..... Z (Example) M9NWZ

\* Solid state auto switches marked with "○" are produced upon receipt of order.

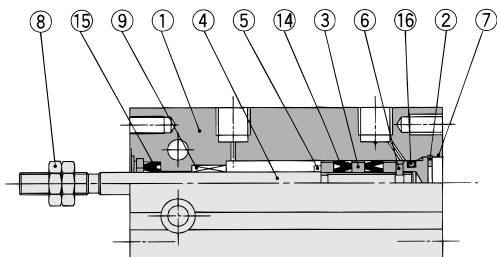
\* Since there are applicable auto switches other than the above, refer to page 538 for details.  
\* For detail about auto switches with pre-wired connector, refer to pages 1328 to 1329.  
\* Auto switches are shipped together but not assembled.

CUJ  
CU  
CQS  
CQ2  
RQ  
CQM  
MU

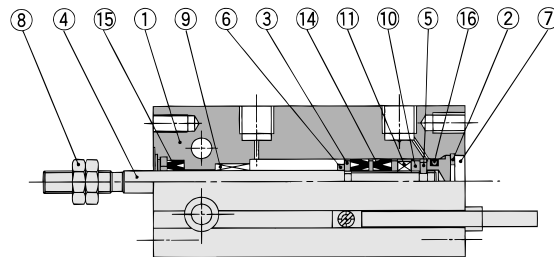
D-□  
-X□  
Individual  
-X□  
Technical data

## Construction

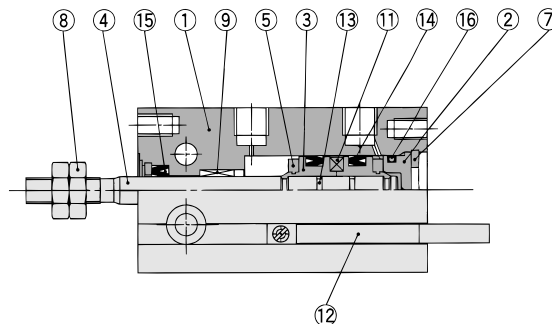
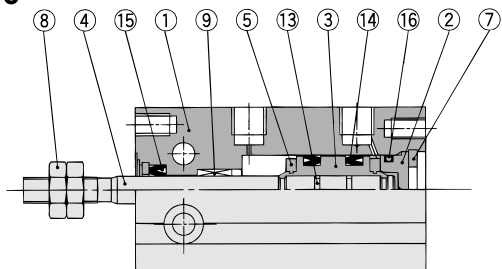
ø6



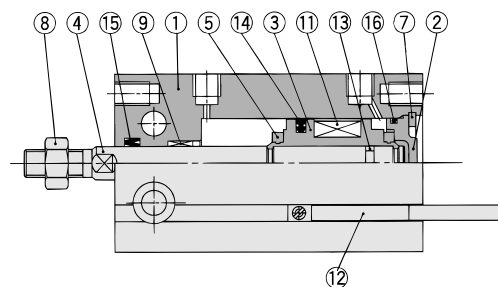
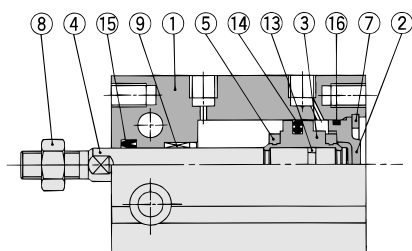
With auto switch



ø10



ø16 to ø32



### Component Parts

No.	Description	Material	Note
1	Cylinder tube	Aluminum alloy	Hard anodized
2	Head cover	Brass	ø6 to ø10, Electroless nickel plated
		Aluminum alloy	ø16 to ø32, Chromated
3	Piston	Brass	ø6 to ø10
		Aluminum alloy	ø16 to ø32, Chromated
4	Piston rod	Stainless steel	
5	Bumper A	Urethane	
6	Bumper B	Urethane	
7	Retaining ring	Carbon tool steel	Phosphate coated

### Component Parts

No.	Description	Material	Note
8	Rod end nut	Carbon steel	Nickel plated
9	Bushing	Oil-impregnated sintered alloy	
10	Magnet holder	Brass	ø6
11	Magnet	—	
12	Auto switch	—	
13	Piston gasket	NBR	
14*	Piston seal		
15*	Rod seal		
16*	Gasket		

### Replacement Parts: Seal Kit

Bore size (mm)	Kit no.	Contents
10	CU10D-PS	Set of nos. above 14, 15, 16
16	CU16D-PS	
20	CU20D-PS	
25	CU25D-PS	
32	CU32D-PS	



\* Seal kit includes 14, 15, 16. Order the seal kit, based on each bore size.

\* Seal kit includes a grease pack (10 g).

Order with the following part number when only the grease pack is needed.

Grease pack part number: GR-S-010 (10 g)