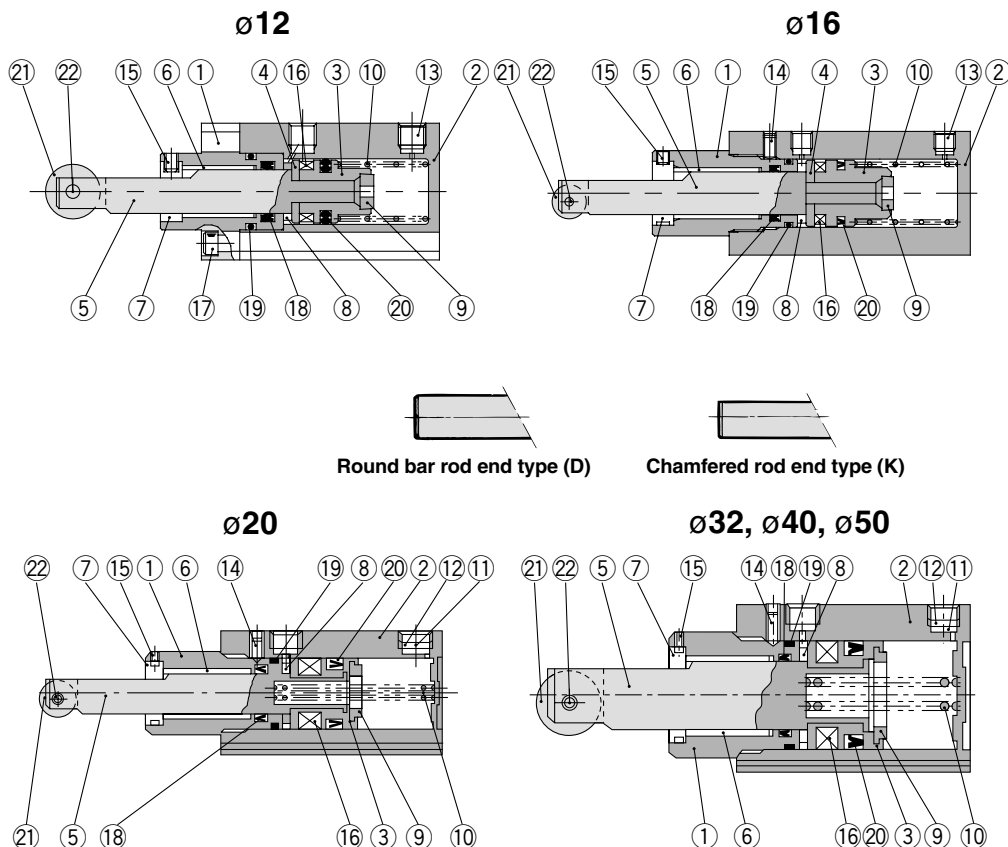
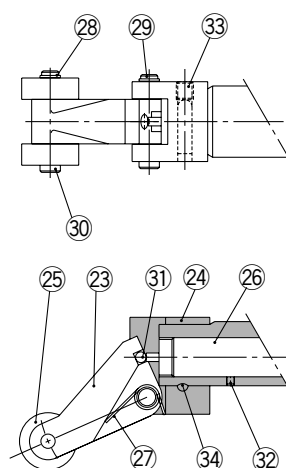


Construction

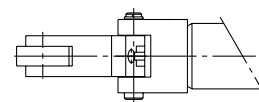
Roller rod end



Built-in shock absorber Lever rod end type (ø32, ø40, ø50 only)



Only one roller is provided for ø32.



Component Parts

No.	Description	Material	Note
1	Rod cover	Aluminum alloy	Anodized*
2	Cylinder tube	Aluminum alloy	Hard anodized
3	Piston	Aluminum alloy	Chromated
4	Spacer for switch	Aluminum alloy	ø12, ø16 only
5	Piston rod	ø12, ø16, ø20 Stainless steel ø32, ø40, ø50 Carbon steel	Hard chrome plated
6	Bushing	Copper alloy	
7	Non-rotating guide	Rolled steel	Non-rotating type only
8	Bumper A	Urethane	
9	Bumper B	Urethane	
10	Return spring	Steel wire	Zinc chromated (Except double acting)
11	Element	Sintered metallic BC	ø20 to ø50 (Single acting only)
12	Retaining ring	Carbon tool steel	ø20 to ø50 (Single acting only)
13	Plug with fixed orifice	Alloy steel	ø12, ø16 only
14	Hexagon socket head set screw	Chromium molybdenum steel	Except ø12
15	Hexagon socket head set screw	Chromium molybdenum steel	
16	Magnet	—	
17	Hexagon socket head cap screw	Alloy steel	ø12 only
18	Rod seal	NBR	
19	Gasket	NBR	
20	Piston seal	NBR	

Roller type

21	Roller A	Resin	
22	Spring pin	Carbon tool steel	

Component Parts (For single acting)

No.	Description	Material	Note
Lever type			
23	Lever	Cast iron	
24	Lever holder	Rolled steel	
25	Roller B	Resin	
26	Shock absorber	—	ø32-RB1007-X225 ø40, 50-RB1407-X552
27	Lever spring	Stainless steel wire	
28	Type C retaining ring for axis	Carbon tool steel	
29	Lever pin	Carbon steel	
30	Roller pin	Carbon steel	
31	Steel balls	High carbon chrome bearing steel	
32	Hexagon socket head set screw	Chromium molybdenum steel	
33	Hexagon socket head set screw	Chromium molybdenum steel	
34	One-side tapered pin	Carbon steel	

Replacement Parts/Seal Kit

Bore size (mm)	Kit no.			Contents
	Double acting	Double acting with spring loaded	Single acting	
12	RSQ12D-PS	RSQ12T-PS		Set of above nos. (18, 19, 20)
16	RSQ16D-PS	RSQ16B-PS	RSQ16T-PS	
20	RSQ20D-PS	RSQ20B-PS	RSQ20T-PS	
32	RSQ32D-PS	RSQ32B-PS	RSQ32T-PS	
40	RSQ40D-PS	RSQ40B-PS	RSQ40T-PS	
50	RSQ50D-PS	RSQ50B-PS	RSQ50T-PS	

* Seal kit includes (18, 19, 20). Order the seal kit, based on each bore size.

* Since the seal kit does not include a grease pack, order it separately.

Grease pack part no.: GR-S-010 (10g)

Replacement Parts: Shock Absorber

Bore size (mm)	Kit no.
32	RB1007-X225
40, 50	RB1407-X552