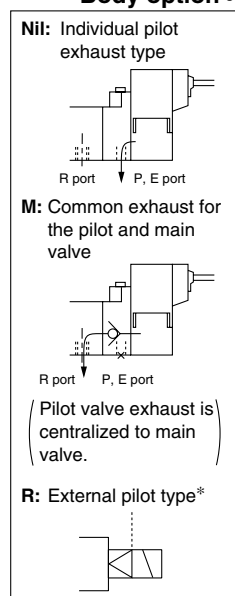
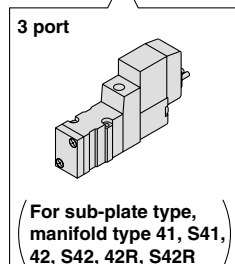
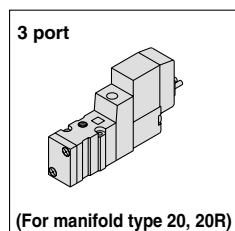


## How to Order



**Type of actuation**

1	Normally closed
2	Normally open

### Rated voltage

**DC**

5	24 VDC
6	12 VDC
V	6 VDC
S	5 VDC
R	3 VDC

**AC (50/60 Hz)**

1	100 VAC
2	200 VAC
3	110 VAC [115 VAC]
4	220 VAC [230 VAC]

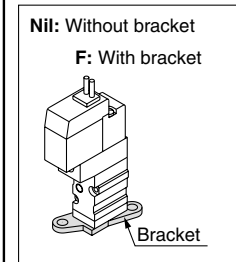
\* For type "W□", DC voltage is only available.

### Light/Surge voltage suppressor

Nil	Without light/surge voltage suppressor
S	With surge voltage suppressor
Z	With light/surge voltage suppressor
R	With surge voltage suppressor (Non-polar type)
U	With light/surge voltage suppressor (Non-polar type)

\* For AC voltage valves there is no "S" option. It is already built-in to the rectifier circuit.  
\* For type R, U, DC voltage is only available.  
\* Power saving circuit is only available in the "Z" type.

### Bracket



\* Bracket is mounted.  
\* External pilot type is not available.

**Body ported** SYJ3 1 2 □ □ 5 M □ □ M3 □

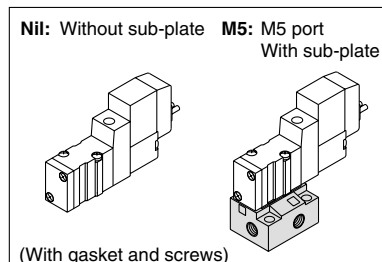
**Base mounted** SYJ3 1 4 □ □ 5 M □ □ □

### Coil specifications

Nil	Standard
T	With power saving circuit (24, 12 VDC only)

\* Power saving circuit is not available in the case of "W□" type.

### Port size

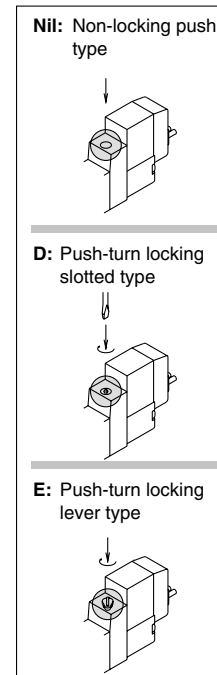


### Electrical entry

24, 12, 6, 5, 3 VDC/100, 110, 200, 220 VAC				24, 12, 6, 5, 3 VDC
Grommet	L plug connector	M plug connector		M8 connector
<b>G:</b> Lead wire length 300 mm	<b>L:</b> With lead wire (Length 300 mm)	<b>M:</b> With lead wire (Length 300 mm)	<b>MN:</b> Without lead wire	<b>WO:</b> Without connector cable
<b>H:</b> Lead wire length 600 mm	<b>LN:</b> Without lead wire	<b>LO:</b> Without connector	<b>MO:</b> Without connector	

\* "LN," "MN" type: with 2 sockets.  
\* For connector cable of M8 connector, refer to page 4-4-60.

### Manual override

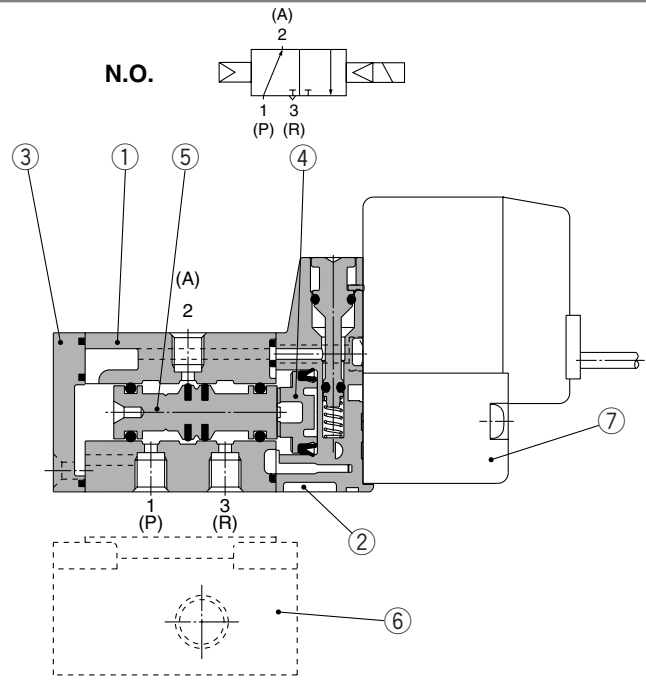
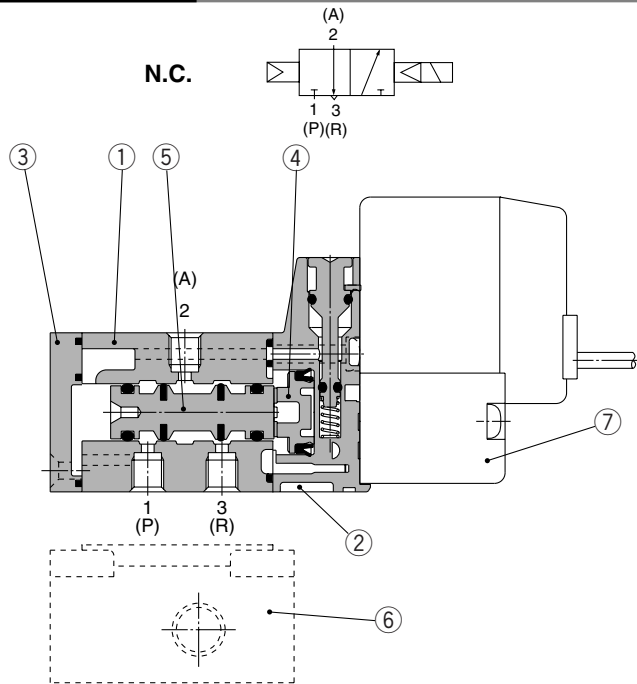


\* SYJ3□2R is only for manifold use.

Note) When placing an order for body ported solenoid valve as a single unit, mounting bolt for manifold and gasket are not attached. Order them separately, if necessary. (For details, refer to page 4-4-11.)

# 3 Port Pilot Operated Solenoid Valve Rubber Seal Series SYJ300

## Construction



### Component Parts

No.	Description	Material	Note
①	Body	Zinc die-casted	White
②	Piston plate	Resin	White
③	End cover	Resin	White
④	Piston	Resin	—
⑤	Spool valve assembly	Aluminum, HNBR	—

### Replacement Parts

No.	Description	Part no.	Note
⑥	Sub-plate	SYJ300-9-1	Zinc die-casted
⑦	Pilot valve	V111(T)-□□□□	

## How to Order Pilot Valve Assembly

V111□—5G□

### Coil specifications

Nil	Standard: DC specifications
A	Standard: AC specifications
T	With power saving circuit (24, 12 VDC only)

\* Power saving circuit is not available in the case of "W□" type.

### Rated voltage

5	24 VDC
6	12 VDC
V	6 VDC
S	5 VDC
R	3 VDC
1	100 VAC 50/60 Hz
2	200 VAC 50/60 Hz
3	110 VAC 50/60 Hz [115 VAC 50/60 Hz]
4	220 VAC 50/60 Hz [230 VAC 50/60 Hz]

\* For type "W□", DC voltage is only available.

### Electrical entry

G	Grommet, 300 mm lead wire
H	Grommet, 600 mm lead wire
L	L plug connector
LN	Without lead wire
LO	Without connector
M	M plug connector
MN	Without lead wire
MO	Without connector
WO	M8 connector Without connector cable

\* For connector cable of M8 connector, refer to page 4-4-60.

### Light/Surge voltage suppressor

Nil	Without light/surge voltage suppressor
S	With surge voltage suppressor
Z	With light/surge voltage suppressor
R	With surge voltage suppressor (Non-polar type)
U	With light/surge voltage suppressor (Non-polar type)

\* For AC voltage valves there is no "S" option. It is already built-in to the rectifier circuit.  
\* For "R" and "U", DC voltage is only available.  
\* Power saving circuit is only available in the "Z" type.

## How to Order Connector Assembly for L/M Plug Connector

For DC: SY100-30-4A-

For 100 VAC: SY100-30-1A-

For 200 VAC: SY100-30-2A-

For other voltages of AC: SY100-30-3A-

Without lead wire: SY100-30-A  
(with connector and 2 of sockets only)

### Lead wire length

Nil	300 mm
6	600 mm
10	1000 mm
15	1500 mm
20	2000 mm
25	2500 mm
30	3000 mm
50	5000 mm

## How to Order M8 Connector Cable

V100-49-1-

### Cable length

1	300 mm
2	500 mm
3	1000 mm
4	2000 mm
7	5000 mm

V100

SY

SYJ

VK

VZ

VT

VP

VG

VP

S070

VQ

VKF

VQZ

VZ

VS

VFN