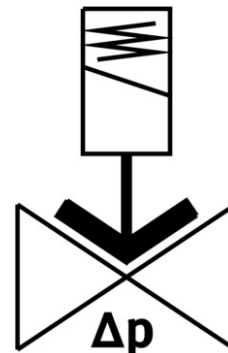
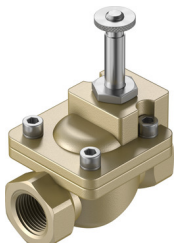



# Solenoid valve VZWM-L-M22C-G12-F4

Part number: 546148

FESTO



 General operating condition

## Data sheet

Feature	Value
Design	Diaphragm valve servo-controlled
Type of actuation	Electric
Sealing principle	Soft
Mounting position	Preferably vertical
Type of mounting	In-line installation
Connection Process valve	G1/2
Electrical connection	Solenoid coil type MD-... , coil can be ordered as an accessory
Nominal size	13.5 mm
Valve function	2/2-way, closed, monostable
Flow direction	Non-reversible
Medium	Compressed air to ISO 8573-1:2010 [7:4:4] Inert gases Water Neutral fluids
Medium pressure, valve for liquid media	0.5 bar ... 6 bar
Medium pressure, valve for gaseous media	0.5 bar ... 10 bar
Pressure difference	0.5 bar
Type of piloting	Pilot actuated
Symbol	00995681
Max. viscosity	22 mm <sup>2</sup> /s
Media temperature	-10 °C ... 60 °C
Media temperature for fluids	5 °C ... 50 °C
Ambient temperature	-10 °C ... 60 °C
Flow rate Kv	2.4 m <sup>3</sup> /h
Standard nominal flow rate	2400 l/min
Switching time on	8 ms
Switch-on time for fluids	110 ms
Switching time off	10 ms
Switch-off time for fluids	220 ms

Feature	Value
b value	0.37
C value	9.8 l/sbar
Note on materials	RoHS-compliant
LABS (PWIS) conformity	VDMA24364 zone III
Material housing	Brass
Material number housing	2.0402
Material seals	NBR
Material plunger tube	High-alloy steel
Product weight	450 g
Corrosion resistance class CRC	1 - Low corrosion stress
Max. tightening torque for cover screw	20 Nm
Max. tightening torque for connecting thread	105 Nm
Max. tightening torque for coil fastening	0.5 Nm