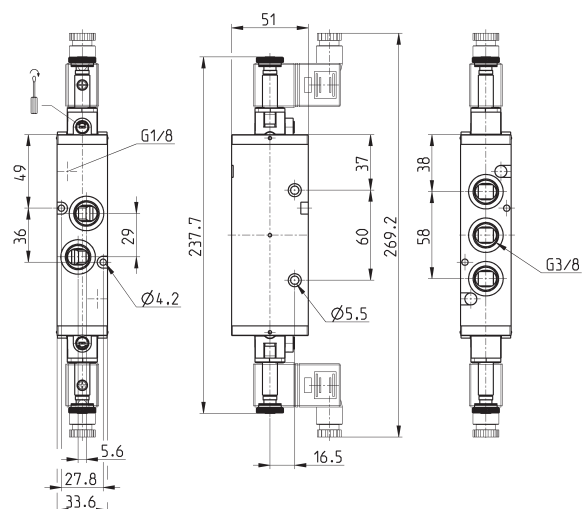
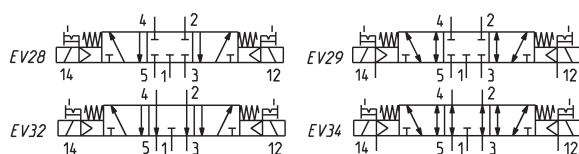


5/3-way solenoid valve, G3/8 - Mod. 463-011... and 473-011...

New



CC = Centres Closed
CO = Centres Open

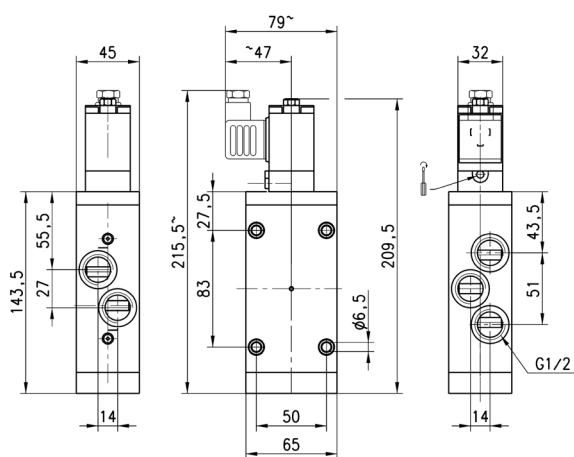
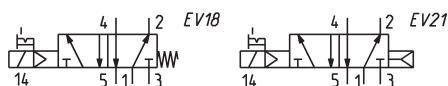


Mod.	Function	Flow Qn (Nl/min)	Working pressure (bar)	Min. pilot pressure (bar)	Symbol
463-011-22	5/3 CC	1600	2.5 ÷ 10	-	EV28
463-E11-22	5/3 CC	1600	-0.9 ÷ 10	2.5	EV29
473-011-22	5/3 CO	1600	2.5 ÷ 10	-	EV32
473-E11-22	5/3 CO	1600	-0.9 ÷ 10	2.5	EV34

5/2-way solenoid valve, G1/2, monostable - Mod. 452C...



These solenoid valves, which have electropneumatic actuation and spring or pneumatic spring return are suitable for operating double-acting cylinders.



Mod.	Function	Flow rate Qn (Nl/min)	Operating pressure (bar)	Symbol	
452C-015-50-A6*	5/2	2500	2.5 ÷ 10	EV18	* choose the desired voltage
452C-016-50-A6*	5/2	2500	2.5 ÷ 10	EV21	* choose the desired voltage