

# Miniature Regulator

## Series ARJ210

■ Lightweight body made of aluminum (60 g)

■ Two styles of piping connections provided for the IN side: 1/8 (male thread) and M5 (female thread)

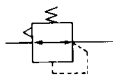


ARJ210-M5



ARJ210-M5BG

JIS Symbol



### Standard Specifications

Model		ARJ210-M5
Port size	IN side	1/8 (Male thread), M5 x 0.8 (Female thread)
	OUT side	M5 x 0.8 (Female thread 2 pcs.)
Fluid		Air
Proof pressure		1.2 MPa
Maximum operating pressure		0.8 MPa
Regulating pressure range		0.2 to 0.7 MPa
		0.2 MPa setting 0.05 to 0.2 MPa
Pressure gauge port size		M5 x 0.8 (Female thread)
Ambient and fluid temperature		-5 to 60°C (No freezing)
Weight (kg)		0.06

### Accessory (Option)/Part No.

Bracket	134856
Pressure gauge (Note)	G27-10-M5-X201



Note) If ordering the pressure gauge, M-5N (nipple) is required. Part number of the pressure gauge with a nipple assembled is G27-10-M5-X215.

### How to Order

**ARJ 2 10 — M5 BG — 1**

Miniature regulator  
Body size

Option

1	0.2 MPa setting
S	With seal

Note 1) Compared with standard specifications, its adjusting spring has only been changed. It is not the product which does not allow the pressure more than 0.2 MPa. Adjusting spring is not replaceable.

Accessory

Port size

M5	IN	1/8 (Male thread) M5 x 0.8 (Female thread)
	OUT	M5 x 0.8 (Female thread)

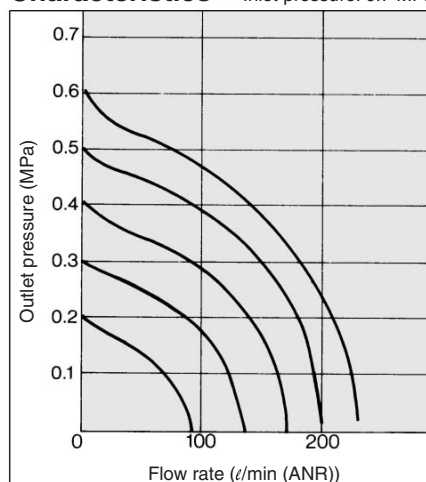
Symbol	Description
Nil	—
B	With bracket
G	With pressure gauge

Model

1	Relieving type (Standard)
---	---------------------------

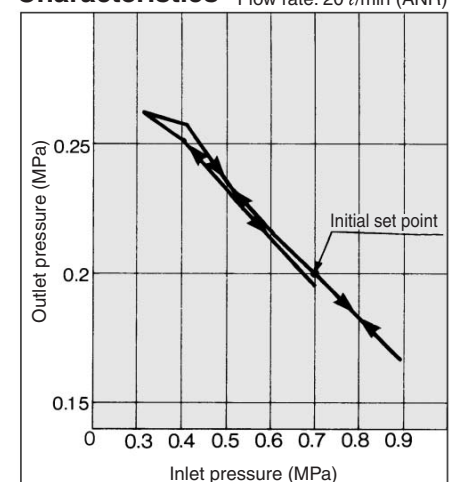
### Flow Characteristics

Inlet pressure: 0.7 MPa



### Pressure Characteristics

(Initial setting)  
Inlet pressure: 0.7 MPa  
Outlet pressure: 0.2 MPa  
Flow rate: 20 l/min (ANR)

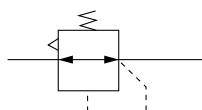


# Miniature Regulator

## Series *ARJ310*



JIS Symbol



### Standard Specifications

Pressure gauge port size	Rc 1/8, NPT 1/8 (Female thread)
Fluid	Air
Proof pressure	1.2 MPa
Maximum operating pressure	0.8 MPa
Regulating pressure range	Standard: 0.2 to 0.7 MPa, Low pressure use (0.2 MPa setting): 0.05 to 0.2 MPa
Ambient and operating temperature range	-5 to 60°C (With no freezing)
Weight	Approx. 65 g

### Model

Model	Port size	
	IN *	OUT
ARJ310-01	R 1/8, M5 x 0.8	Rc 1/8
ARJ310-N01	NPT 1/8, M5 x 0.8	NPT 1/8
ARJ310F-01-04	R 1/8, M5 x 0.8	ø4 One-touch fitting
ARJ310F-01-06		ø6 One-touch fitting
ARJ310F-N01-03	NPT 1/8, M5 x 0.8	ø5/32" One-touch fitting
ARJ310F-N01-07		ø1/4" One-touch fitting

\* M5 x 0.8 female thread is cut inside the pipe.

### Accessory (Option) Part No.

Bracket	134856
Pressure gauge <small>Note)</small>	G15-10-01 (Rc 1/8)/G15-P10-N01 (NPT 1/8)

Note) Pressure gauges (G15) for 0.2 MPa are not available.

### How to Order

**Port size (IN, OUT)**

01	IN	1/8 (Male thread), M5 x 0.8 (Female thread)
	OUT	1/8 (Female thread)

**ARJ 3 10** — **01** **BG**

**With One-touch fitting** **ARJ 3 10 F** — **01** **BG** — **04**

**Body size**  
10 Relieving type

**Model**  
10 Relieving type

**With One-touch fitting**

**Thread type**

Nil	R, Rc
N	NPT

**Port size (IN)**

01	1/8 (Male thread), M5 x 0.8 (Female thread)
----	---

**Accessory**

Nil	None
B	Bracket
G	Pressure gauge

Note 2) For products with pressure gauge, pressure gauge is shipped together with product.

**Option**

Nil	0.7 MPa setting (Standard)
1	0.2 MPa setting <sup>(1)</sup>
S	With seal

Note 1) Compared with standard specifications, its adjusting spring has been only changed for 0.2 MPa. It is not the product which does not allow the pressure more than 0.2 MPa. Adjusting spring is not replaceable. Besides, in the case with the pressure gauge, the pressure gauge will be the one for 1 MPa.

**Applicable tubing O.D. (OUT)**

**Metric size**

04	4 mm	ARJ310-01
06	6 mm	

**Inch size**

03	5/32"	ARJ310F-N01
07	1/4"	