



**The Timken Company**

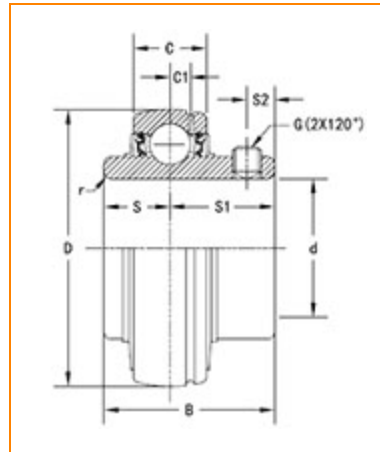
4500 Mt Pleasant St. NW

N. Canton, OH 44720

**Phone:** (234) 262-3000

**E-Mail:** [CustomerCAD@timken.com](mailto:CustomerCAD@timken.com) • **Web site:** [www.timken.com](http://www.timken.com)

## Part Number UC312, UC 300 Wide Inner Ring Ball Bearings - Set Screw Locking



[Specifications](#) | [Dimensions](#) | [Basic Load Ratings](#)

### Specifications

<b>Bore Type</b>	Cylindrical bore
<b>Bearing Type</b>	Ball Bearing
<b>Shaft Size d</b>	60 mm
<b>Material</b>	Bearing Steel
<b>Locking Device</b>	Set Screw Locking

### Dimensions

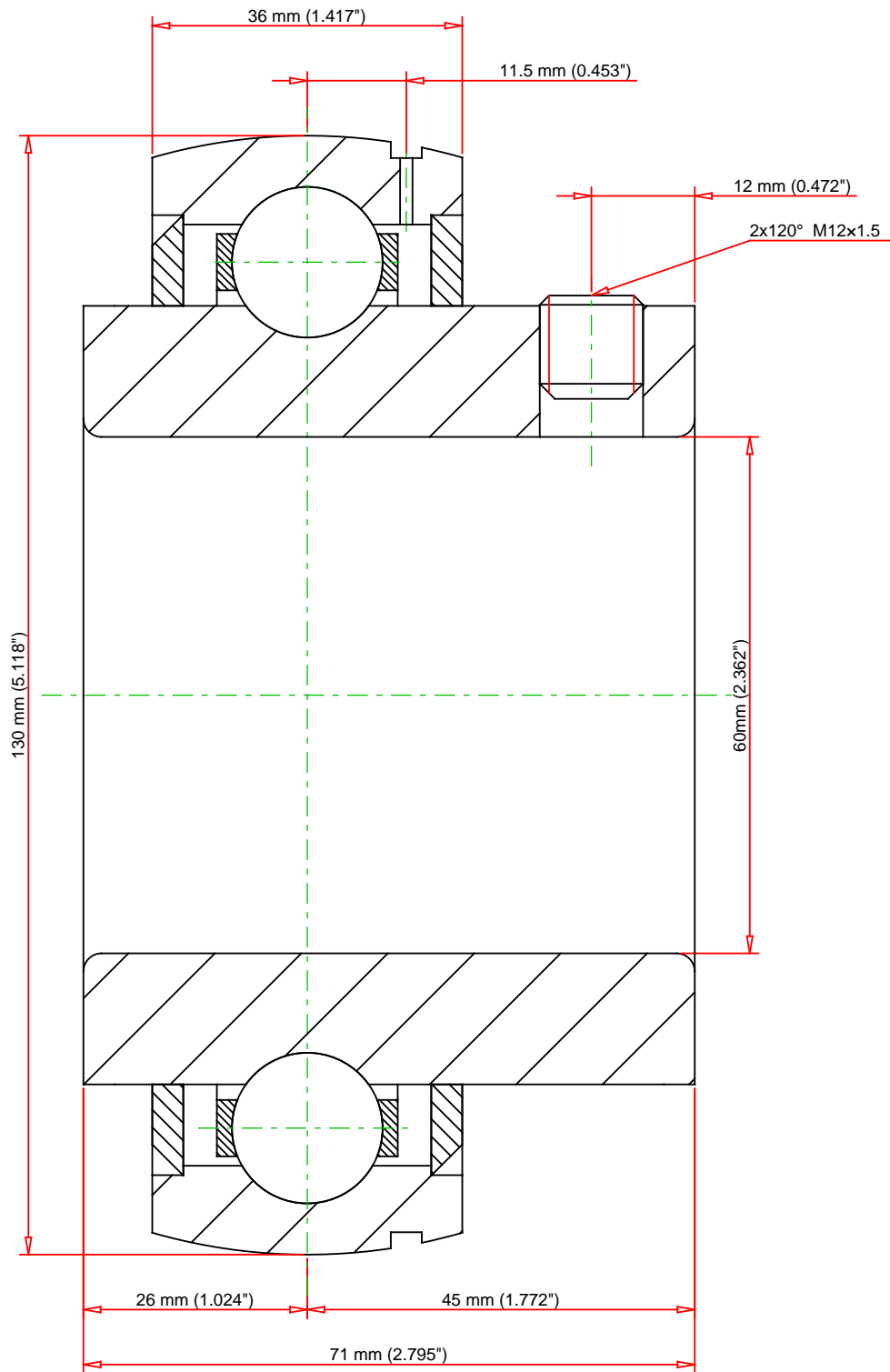
<b>Outside Diameter D</b>	130.000 mm 5.1180 in
---------------------------	-------------------------



<b>Outside Ring Width C</b>	36 mm 1.417 in
<b>Radius r</b>	2.1 mm 0.083 in
<b>Groove Position C1</b>	11.5 mm 0.453 in
<b>Center of Bearing from End S</b>	26 mm 1.024 in
<b>Dimension S1</b>	45 mm 1.772 in
<b>Set Screw Distance S2</b>	12 mm 0.472 in
<b>Set Screw Size</b>	M12×1.5
<b>Number of Set Screws</b>	2
<b>Angle between Set Screws</b>	120 °

## Basic Load Ratings

<b>Static Load Rating</b>	52200 N 11735 lbf
<b>Dynamic Load Rating</b>	81900 N 18412 lbf



Weight	2.6 lb	1.2 kg
--------	--------	--------

**TIMKEN®**

**THE TIMKEN COMPANY**  
NORTH CANTON, OHIO USA

**UC312**

UC 300 Wide Inner Ring Ball Bearings - Set Screw Locking

Basic Load Ratings - C <sub>r</sub>	18412 lbf	81900 N
Load Ratings - C <sub>0r</sub>	11735 lbf	52200 N

Every reasonable effort has been made to ensure the accuracy of the information contained in this writing, but no liability is accepted for errors, omissions or for any other reason.

**FOR DISCUSSION ONLY**