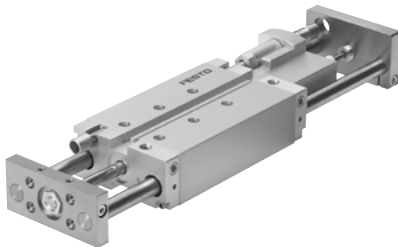
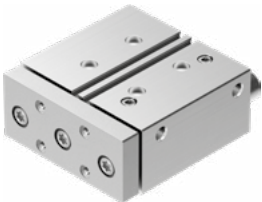


Characteristics

At a glance			
Drive and guide unit in a single housing		Sturdy and precise	High resistance to torques and transverse loads
<ul style="list-style-type: none">Minimal space requirementMinimal mounting timeChoice of compressed air supply portsWide range of mounting options		<ul style="list-style-type: none">Good protection against torsionHigh rigidityMaintenance-free	<ul style="list-style-type: none">With plain-bearing guide: high rigidity thanks to large-diameter guide rods and four plain-bearing bushesWith recirculating ball bearing guide: for applications involving torque loads

Wide choice of variants	
Guided drive DFM	Guided drive DFM-B
<ul style="list-style-type: none">Basic drive with strokes of up to 200 mm	<ul style="list-style-type: none">Drive with strokes of up to 400 mmWith precision adjustment of end positionsWith pneumatic cushioning, adjustable PPVWith shock absorber, self-adjusting, progressive



Application examples		
Clamping The guided drive is perfectly suited to clamping components for reliable further processing.	Lifting The guided drive effortlessly transports and lifts loads of over 200 kg, powerfully and dynamically.	Stopping Loads of up to 150 kg are stopped reliably and safely, making the guided drive a resilient and sturdy stopper cylinder.

