

Air Saving Valve Pressure Valve

Flow Valve

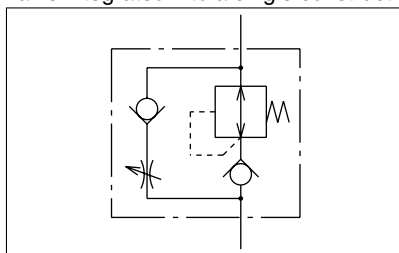
Series ASR/Series ASQ

How to Order

Pressure valve: Series ASR



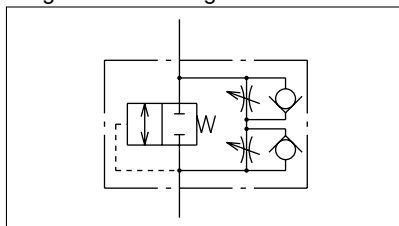
Regulator with check valve and flow control valve integrated into a single construction



Flow valve: Series ASQ



Pilot valve and two-way flow control valve integrated into a single construction



The diagram illustrates the components of the ASQ 0F0206S F20 pressure washer model. Each part of the model number is linked to a specific feature or specification:

- ASR**: Motor type. Options: ASR (Pressure valve), ASQ (Flow valve).
- 4**: Body size. Options: 4 (1/4 standard), 5 (3/8 standard), 6 (1/2 standard).
- 3**: Type. Option: 3 (Universal).
- 0**: With One-touch fitting.
- F**: Option.
- 02**: Port size. Options: 02 (R1/4), 03 (R3/8), 04 (R1/2).
- 06**: Applicable tubing O.D. Options: 06 (6 mm), 08 (8 mm), 10 (10 mm), 12 (12 mm).
- S**: With seal.
- F20**: Variable set pressure type (0.1 to 0.3 MPa). Option: F20 (Fixed set pressure type (0.2 MPa)).

Model

Model		Port size	Applicable tubing O.D. (mm)			
Pressure valve	Flow valve		6	8	10	12
ASR430F-02	ASQ430F-02	R1/4	●	●	●	
ASR530F-02	ASQ530F-02	R1/4	●	●	●	●
ASR530F-03	ASQ530F-03	R3/8	●	●	●	●
ASR630F-03	ASQ630F-03	R3/8			●	●
ASR630F-04	ASQ630F-04	R1/2			●	●

Specifications

Proof pressure		1.5 MPa
Maximum operating pressure		1.0 MPa
Set pressure range	Variable	0.1 to 0.3 MPa
	Fixed (option)	0.2 MPa
Ambient and fluid temperature		−5 to 60°C (with no freezing)
Number of needle rotations		10 rotations
Applicable tubing material		Nylon, Soft nylon, Polyurethane