



The Timken Company

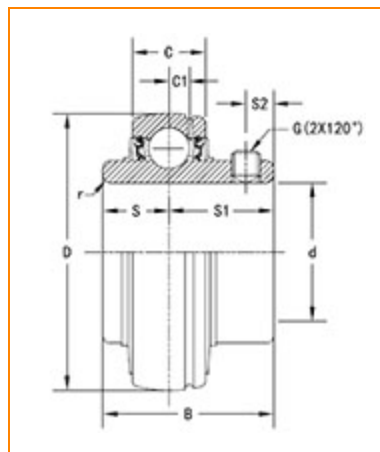
4500 Mt Pleasant St. NW

N. Canton, OH 44720

Phone: (234) 262-3000

E-Mail: CustomerCAD@timken.com • **Web site:** www.timken.com

Part Number UC311, UC 300 Wide Inner Ring Ball Bearings - Set Screw Locking



[Specifications](#) | [Dimensions](#) | [Basic Load Ratings](#)

Specifications

Bore Type	Cylindrical bore
Bearing Type	Ball Bearing
Shaft Size d	55 mm
Material	Bearing Steel
Locking Device	Set Screw Locking

Dimensions

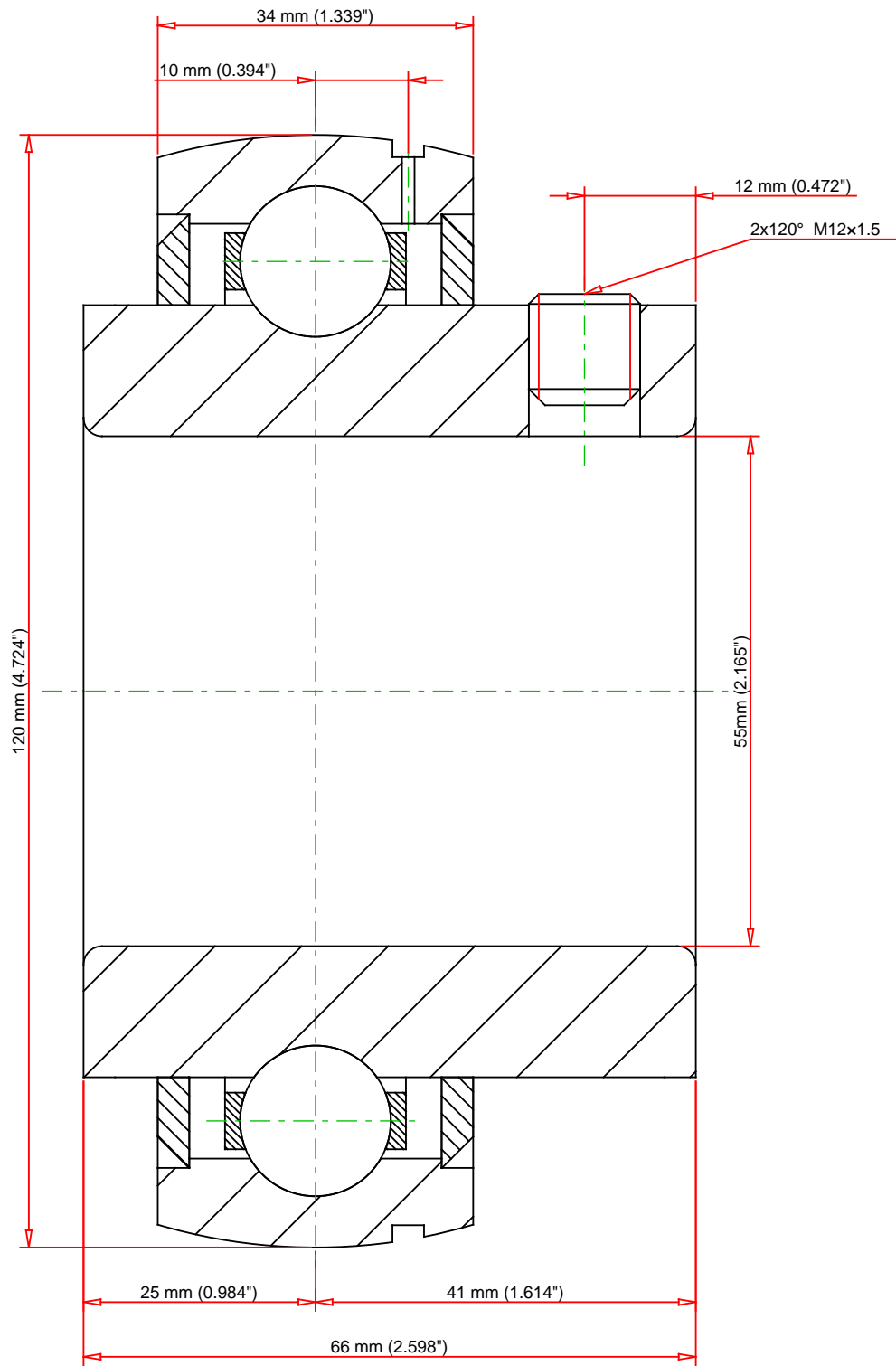
Outside Diameter D	120.000 mm
Outside Ring Width C	34 mm
Radius r	2.0 mm
Groove Position C1	10 mm



Center of Bearing from End S	25 mm
Dimension S1	41 mm
Set Screw Distance S2	12 mm
Set Screw Size	M12×1.5
Number of Set Screws	2
Angle between Set Screws	120 °

Basic Load Ratings

Static Load Rating	45000 N
Dynamic Load Rating	71600 N



Weight	1.9 lb	0.9 kg	<div>TIMKEN®</div> <div>THE TIMKEN COMPANY NORTH CANTON, OHIO USA</div>			<div>UC311</div> <div>UC 300 Wide Inner Ring Ball Bearings - Set Screw Locking</div>		
						Basic Load Ratings - C _r		16096 lbf
			Load Ratings - C _{0r}		10117 lbf	45000 N		
Every reasonable effort has been made to ensure the accuracy of the information contained in this writing, but no liability is accepted for errors, omissions or for any other reason.						FOR DISCUSSION ONLY		