



The Timken Company

4500 Mt Pleasant St. NW

N. Canton, OH 44720

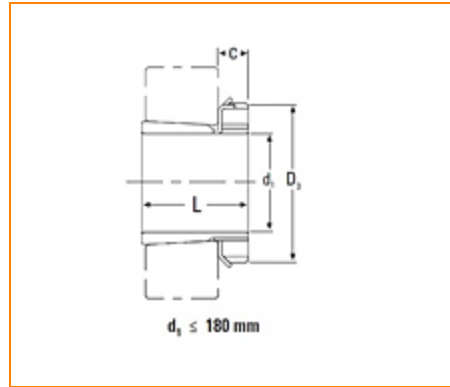
Phone: (234) 262-3000

E-Mail: CustomerCAD@timken.com • **Web site:** www.timken.com

Part Number H322, Metric H Adapter Sleeve

- Safe and effective tapered bore bearing assembly.
- Includes mounting sleeve, locknut and lockwasher or lockplate.
- Other dimensions may be available, consult your Timken sales representative.

* Adapters with a C1 dimension use a lockplate as the locking device as shown in the illustration; otherwise, a lockwasher is used as the locking device.

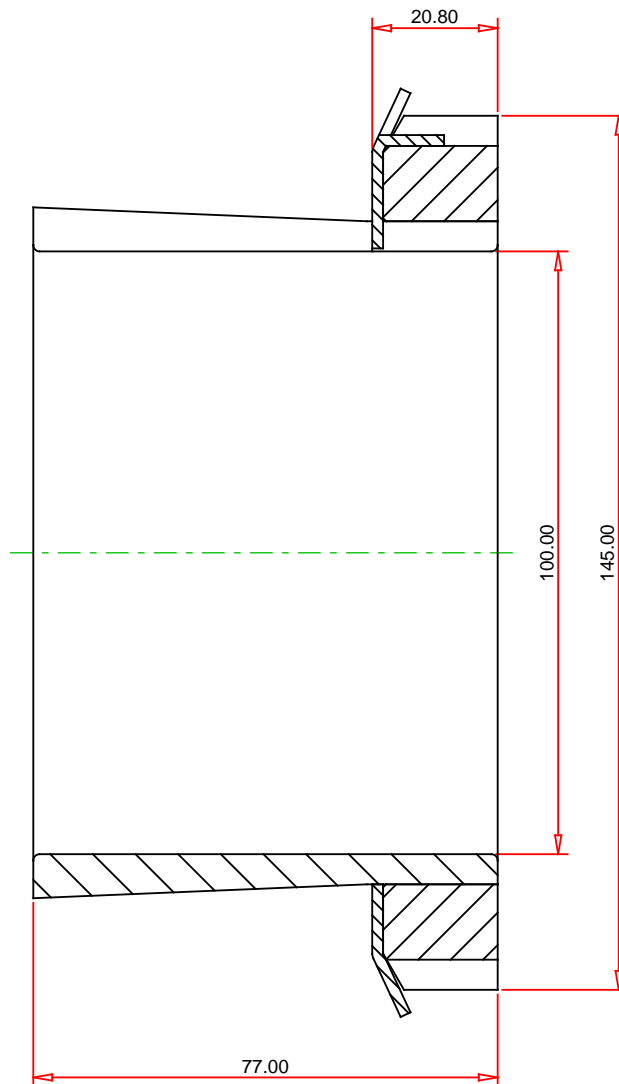


Specifications

d_1	100.00 mm
L	77.00 mm
C	21 mm
Thread G	M110x2
D_3	145 mm
Weight	2.18 Kg
Locknut	KM22
Lockwasher and Lockplates	MB22

Appropriate Hydraulic Nut

HMV22



METRIC UNITS

TIMKEN®

THE TIMKEN COMPANY
NORTH CANTON, OHIO USA

H322
Metric H Adapter Sleeve