



The Timken Company

4500 Mt Pleasant St. NW

N. Canton, OH 44720

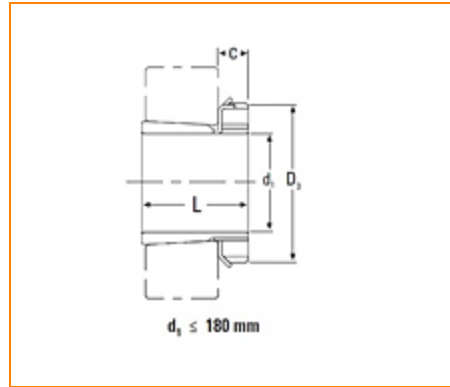
Phone: (234) 262-3000

E-Mail: CustomerCAD@timken.com • **Web site:** www.timken.com

Part Number H3140, Metric H Adapter Sleeve

- Safe and effective tapered bore bearing assembly.
- Includes mounting sleeve, locknut and lockwasher or lockplate.
- Other dimensions may be available, consult your Timken sales representative.

* Adapters with a C1 dimension use a lockplate as the locking device as shown in the illustration; otherwise, a lockwasher is used as the locking device.

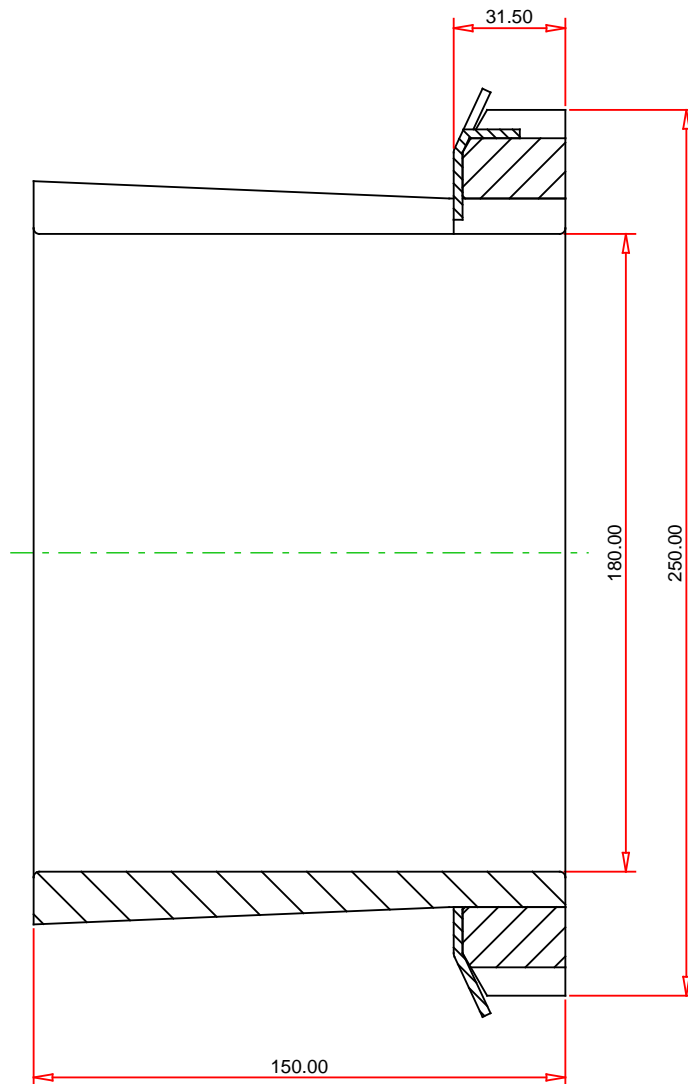


Specifications

d_1	180.00 mm
L	150.00 mm
C	31.5 mm
Thread G	M200x3
D_3	250 mm
Weight	12 Kg
Locknut	KM40
Lockwasher and Lockplates	MB40

Appropriate Hydraulic Nut

HMV40



METRIC UNITS

TIMKEN®

THE TIMKEN COMPANY
NORTH CANTON, OHIO USA

H3140
Metric H Adapter Sleeve

Every reasonable effort has been made to ensure the accuracy of the information contained in this writing, but no liability is accepted for errors, omissions or for any other reason.

FOR DISCUSSION ONLY