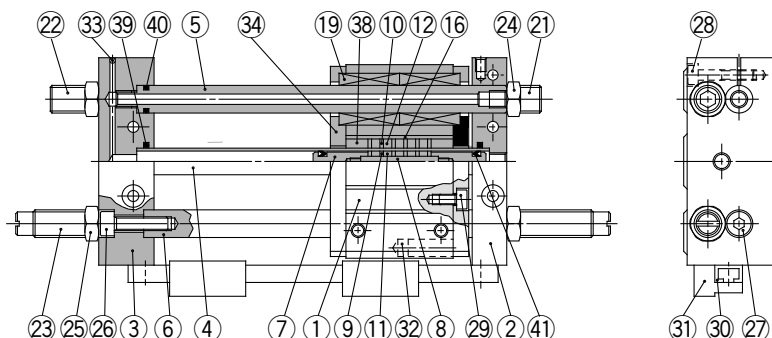


Series CY1L

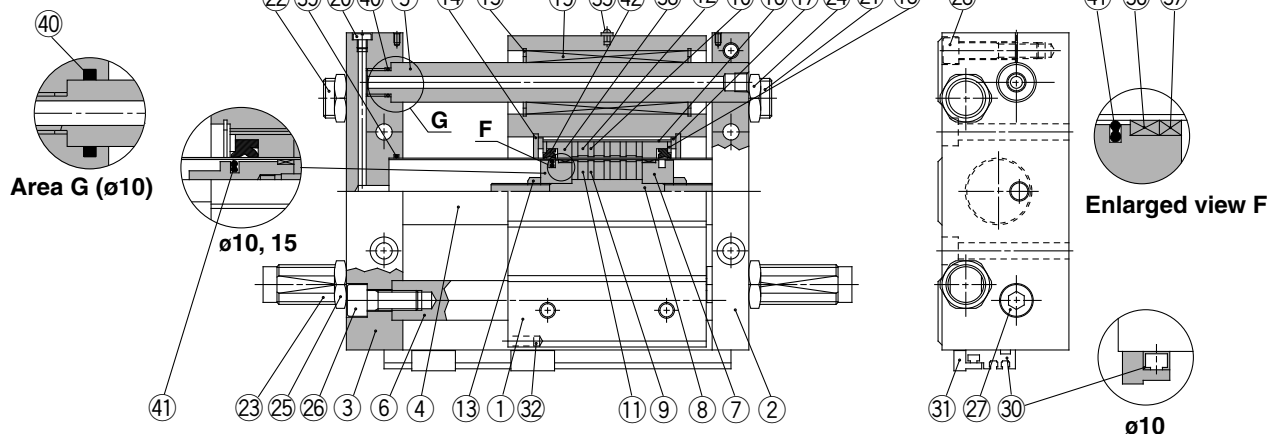
Construction

Slider type/Ball bushing bearing

CY1L6



CY1L10 to 40



Component Parts

No.	Description	Material	Note
1	Slide block	Aluminum alloy	Anodized
2	Plate A	Aluminum alloy	Anodized
3	Plate B	Aluminum alloy	Anodized
4	Cylinder tube	Stainless steel	
5	Guide shaft A	Carbon steel	Hard chrome plated
6	Guide shaft B	Carbon steel	Hard chrome plated
7	Piston	Aluminum alloy ^{Note 1)}	Chromated
8	Shaft	Stainless steel	
9	Piston side yoke	Rolled steel	Zinc chromated
10	External slider side yoke	Rolled steel	Zinc chromated
11	Magnet A	—	
12	Magnet B	—	
13	Piston nut	Carbon steel	Zinc chromated ø25 to ø40
14	Retaining ring	Carbon tool steel	Nickel plated
15	Retaining ring	Carbon tool steel	Nickel plated
16	External slider tube	Aluminum alloy	
17	Slider spacer	Rolled steel	Nickel plated
18	Spacer	Rolled steel	Nickel plated
19	Ball bushing	—	
20	Plug	Brass	ø25, ø32, ø40 only
21	Adjusting bolt A	Chromium molybdenum steel	Nickel plated
22	Adjusting bolt B	Chromium molybdenum steel	Nickel plated
23	Shock absorber	—	
24	Hexagon nut	Carbon steel	Nickel plated
25	Hexagon nut	Carbon steel	Nickel plated
26	Hexagon socket head cap screw	Chromium molybdenum steel	Nickel plated
27	Hexagon socket head cap screw	Chromium molybdenum steel	Nickel plated
28	Hexagon socket head cap screw	Chromium molybdenum steel	Nickel plated

Note 1) Brass for ø6, ø10 and ø15

No.	Description	Material	Note
29	Hexagon socket head cap screw	Chromium molybdenum steel	Nickel plated
30	Switch mounting rail	Aluminum alloy	
31	Auto switch	—	
32	Magnet for auto switch	—	
33	Steel ball	—	ø6, ø10, ø15 only
34	Side cover	Carbon steel	ø6 only
35	Grease cup	Carbon steel	ø15 or larger
36 *	Wear ring A	Special resin	
37 *	Wear ring	Special resin	
38 *	Wear ring B	Special resin	
39 *	Cylinder tube gasket	NBR	
40 *	Guide shaft gasket	NBR	
41 *	Piston seal	NBR	
42 *	Scraper	NBR	

Replacement Parts: Seal Kit

Bore size (mm)	Kit no.	Contents
6	CY1S6-PS-N	Set of nos. above 38, 39, 40, 41
10	CY1L10-PS-N	Set of nos. above 36, 38, 39, 40, 41, 42
15	CY1L15-PS-N	
20	CY1L20-PS-N	Set of nos. above 36, 37, 38, 39, 40, 41, 42
25	CY1L25-PS-N	
32	CY1L32-PS-N	
40	CY1L40-PS-N	

* Seal kit includes 38, 39, 40, 41 for ø6. 36, 38 to 42 are for ø10, ø15. 36 to 42 are for ø20 to ø40. Order the seal kit, based on each bore size.

* ø6: Same for CY1S6

* Seal kit includes a grease pack (ø6, ø10: 5 and 10 g, ø15 to ø40: 10 g). Order with the following part number when only the grease pack is needed.
Grease pack part no. for ø6, ø10: GR-F-005 (5 g) for external sliding parts, GR-S-010 (10 g) for tube interior
Grease pack part no. for ø15 to ø40: GR-S-010 (10 g)