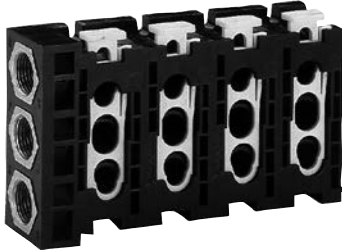


## Directional valves ► Pneumatically operated

### Series 740 Accessories

#### Subbases and accessories



5727-501

Ambient temperature min./max.  
Medium  
Working pressure min./max.

-15°C / +50°C  
Compressed air  
See table below

Materials:  
Base plate  
Seals

Polyoxymethylene  
Acrylonitrile Butadiene Rubber

#### Technical Remarks

- The min. control pressure must be adhered to, since otherwise faulty switching and valve failure may result!
- The pressure dew point must be at least 15 °C under ambient and medium temperature and may not exceed 3 °C.
- The oil content of compressed air must remain constant during the life cycle.
- Use only the approved oils from AVENTICS, see chapter „Technical information“.

Type	Working pressure min./max.	Weight [kg]	Part No.
Supply plate, complete with O-rings	0 / 10	0.245	<b>8985003902</b>
Supply plate, corrosion-protected, complete with O-rings	0 / 10	0.237	<b>8985003972</b>
Sandwich plate 740, complete with O-rings.	0 / 10	0.089	<b>8985003922</b>
End plate	0 / 10	0.092	<b>8985003912</b>
Dummy flange for reserve places complete with seals	0 / 10	0.033	<b>5727406012</b>
Adapter for separate air supply	-	0.008	<b>8939102500</b>
Sealing kit: 10 O-rings, connection "R" and "S", 5 O-rings, connection "P" Ø 8 mm, 5 O-rings, connection "P" Ø 10 mm	0 / 10	0.009	<b>5727400092</b>