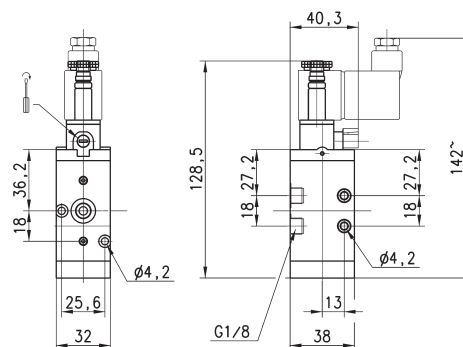
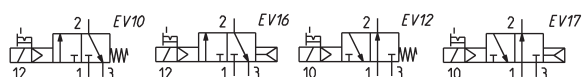


3/2-way solenoid valve G1/8, monostable - Mod. 438... and 448...



These solenoid valves, which have electropneumatic actuation and spring return, are available in the NC (closed) or NO (open) version.

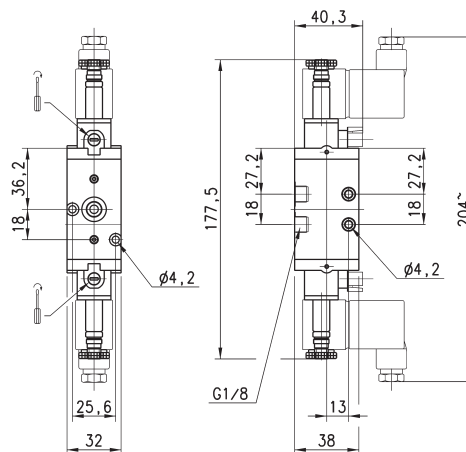
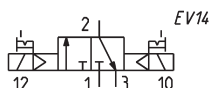


Mod.	Function	Flow rate Qn (NL/min)	Operating pressure (bar)	Symbol
438-015-22	3/2 NC	650	2.5 ÷ 10	EV10
438-016-22	3/2 NC	650	2.5 ÷ 10	EV16
448-015-22	3/2 NO	650	2.5 ÷ 10	EV12
448-016-22	3/2 NO	650	2.5 ÷ 10	EV17

3/2-way solenoid valve G1/8, bistable - Mod. 438-011...



These solenoid valves, which have electropneumatic actuation and return, assume the NC (closed) or NO (open) operating status depending on the last pulse received.



Mod.	Function	Flow rate Qn (NL/min)	Operating pressure (bar)
438-011-22	3/2	650	2 ÷ 10