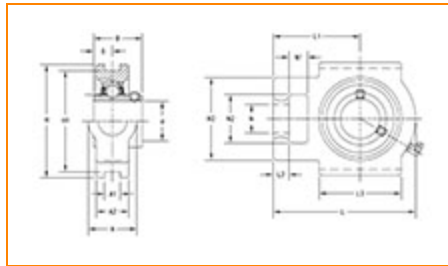



The Timken Company

4500 Mt Pleasant St. NW

N. Canton, OH 44720

Phone: (234) 262-3000

E-Mail: CustomerCAD@timken.com • **Web site:** www.timken.com
Part Number UCT217, UCT 200 Take-Up Mounted Bearings - Set Screw Locking

[Specifications](#) | [Dimensions](#) | [Basic Load Ratings](#)
Specifications

Bearing Number	UC217
Shaft Size d	85 mm
UPC Code	087796141131
Locking Style	Set Screw Locking
Housing Construction	Take-Up

Dimensions

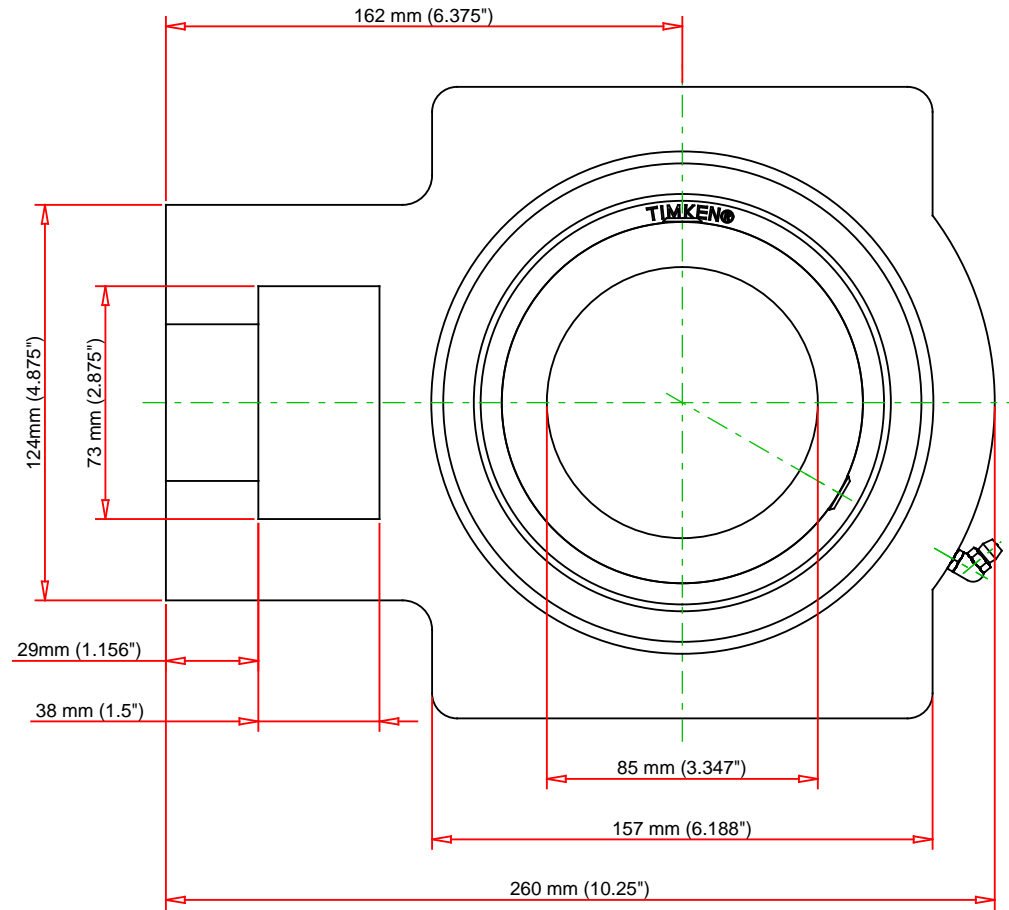
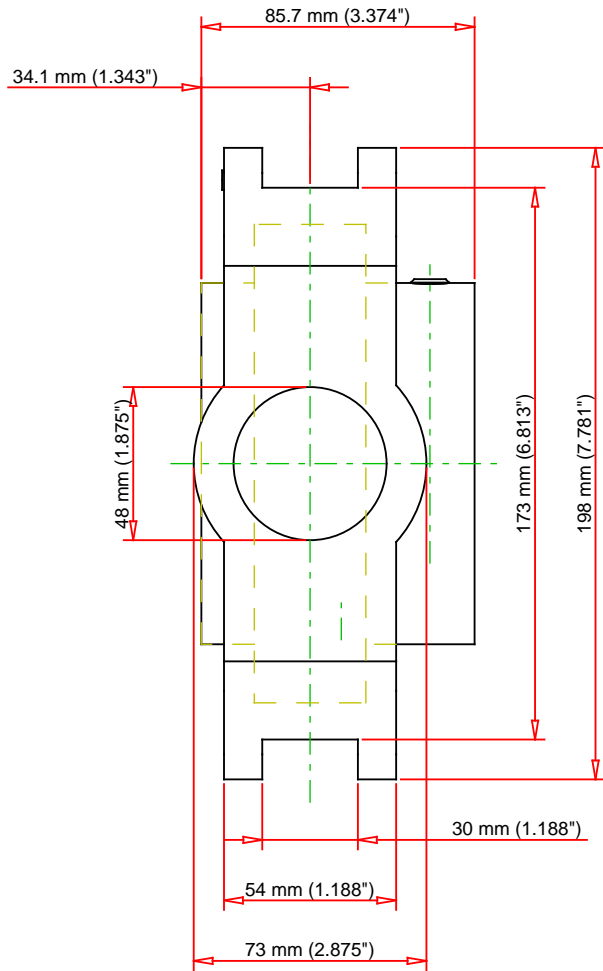
Housing Width A	73 mm
Slot Width A1	30 mm
Socket Width A2	54 mm
Total Height H	198 mm



Pitch Height H1	173 mm
Height H2	124 mm
Total Length L	260 mm
Shaft Length L1	162 mm
Dimension L2	29 mm
Slot Length L3	157 mm
Adjustment Screw Bore N	48 mm
Opening Width N1	38 mm
Opening Height N2	73 mm
Inner Ring Width B	85.7 mm
Center of Bearing from End S	34.1 mm
Grease Nipple Size	A-R1/8

Basic Load Ratings

Static Load Rating	61900 N
Dynamic Load Rating	84000 N



Bearing Number	UC217			
Load Ratings - C _r	18884	lbf	84000	N
Load Ratings - C _{0r}	13916	lbf	61900	N
Weight	24.3	lb	11	kg

TIMKEN

THE TIMKEN COMPANY
NORTH CANTON, OHIO USA

UCT217

UCT 200 Take-Up Mounted Bearings - Set
Screw Locking

Every reasonable effort has been made to ensure the accuracy of the information contained in this writing, but no liability is accepted for errors, omissions or for any other reason.

FOR DISCUSSION ONLY