



The Timken Company

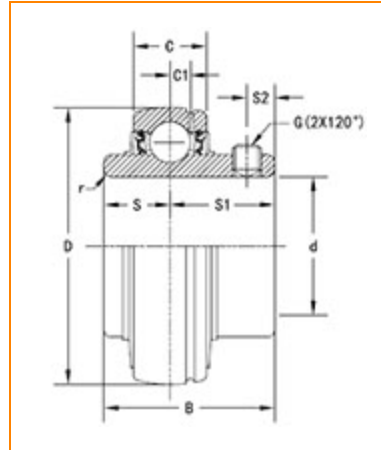
4500 Mt Pleasant St. NW

N. Canton, OH 44720

Phone: (234) 262-3000

E-Mail: CustomerCAD@timken.com • **Web site:** www.timken.com

Part Number UC309, UC 300 Wide Inner Ring Ball Bearings - Set Screw Locking



[Specifications](#) | [Dimensions](#) | [Basic Load Ratings](#)

Specifications

Bore Type	Cylindrical bore
Bearing Type	Ball Bearing
Shaft Size d	45 mm
Material	Bearing Steel
Locking Device	Set Screw Locking

Dimensions

Outside Diameter D	100.000 mm 3.9370 in
---------------------------	-------------------------



Outside Ring Width C
30 mm
1.181 in

Radius r
1.5 mm
0.059 in

Groove Position C1
8.5 mm
0.335 in

Center of Bearing from End S
22 mm
0.866 in

Dimension S1
35 mm
1.378 in

Set Screw Distance S2
10 mm
0.394 in

Set Screw Size
M10×1.25

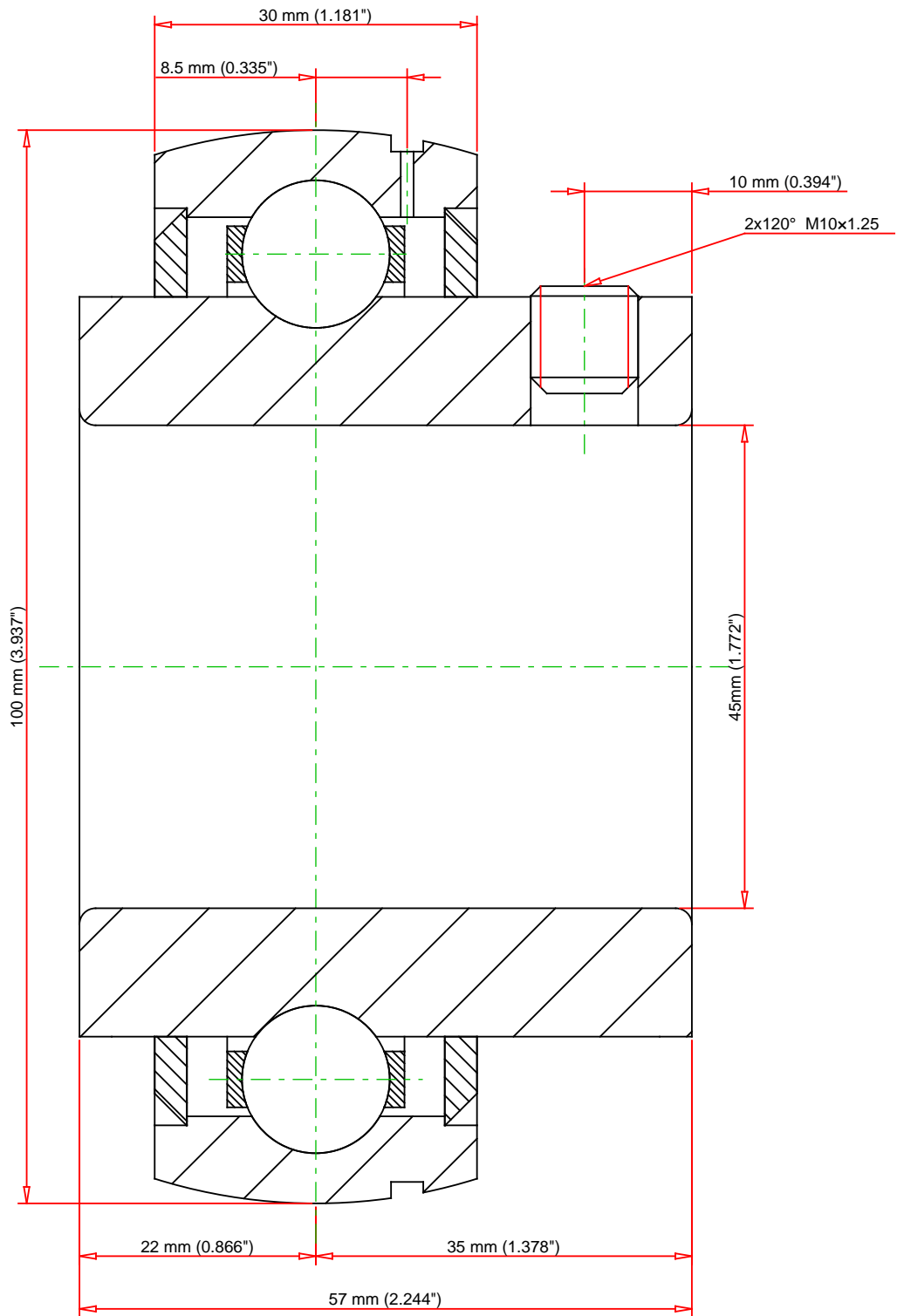
Number of Set Screws
2



Angle between Set Screws
120 °

Basic Load Ratings

Static Load Rating
29500 N
6632 lbf

Dynamic Load Rating
48900 N
10993 lbf



Weight	1.3 lb	0.6 kg		UC309 UC 300 Wide Inner Ring Ball Bearings - Set Screw Locking	
					
			Basic Load Ratings - C _r	10993 lbf	48900 N
Every reasonable effort has been made to ensure the accuracy of the information contained in this writing, but no liability is accepted for errors, omissions or for any other reason.			Load Ratings - C _{0r}	6632 lbf	29500 N
			FOR DISCUSSION ONLY		