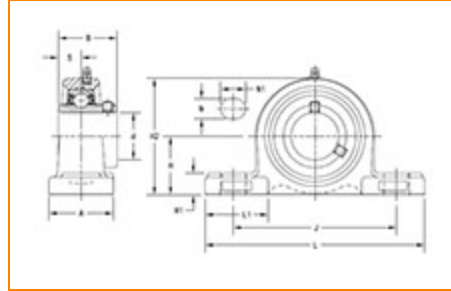




The Timken Company
 4500 Mt Pleasant St. NW
 N. Canton, OH 44720
Phone: (234) 262-3000

E-Mail: CustomerCAD@timken.com • **Web site:** www.timken.com

Part Number UCP212, UCP 200 Pillow Block Housed Units - Set Screw Locking



[Specifications](#) | [Dimensions](#) | [Basic Load Ratings](#)

Specifications

Bearing Number	UC212
Shaft Size d	60 mm
Weight	10.8 lb 4.90 Kg
UPC Code	087796072862
Locking Style	Set Screw Locking
Housing Construction	Two-Bolt Pillow Block

Dimensions

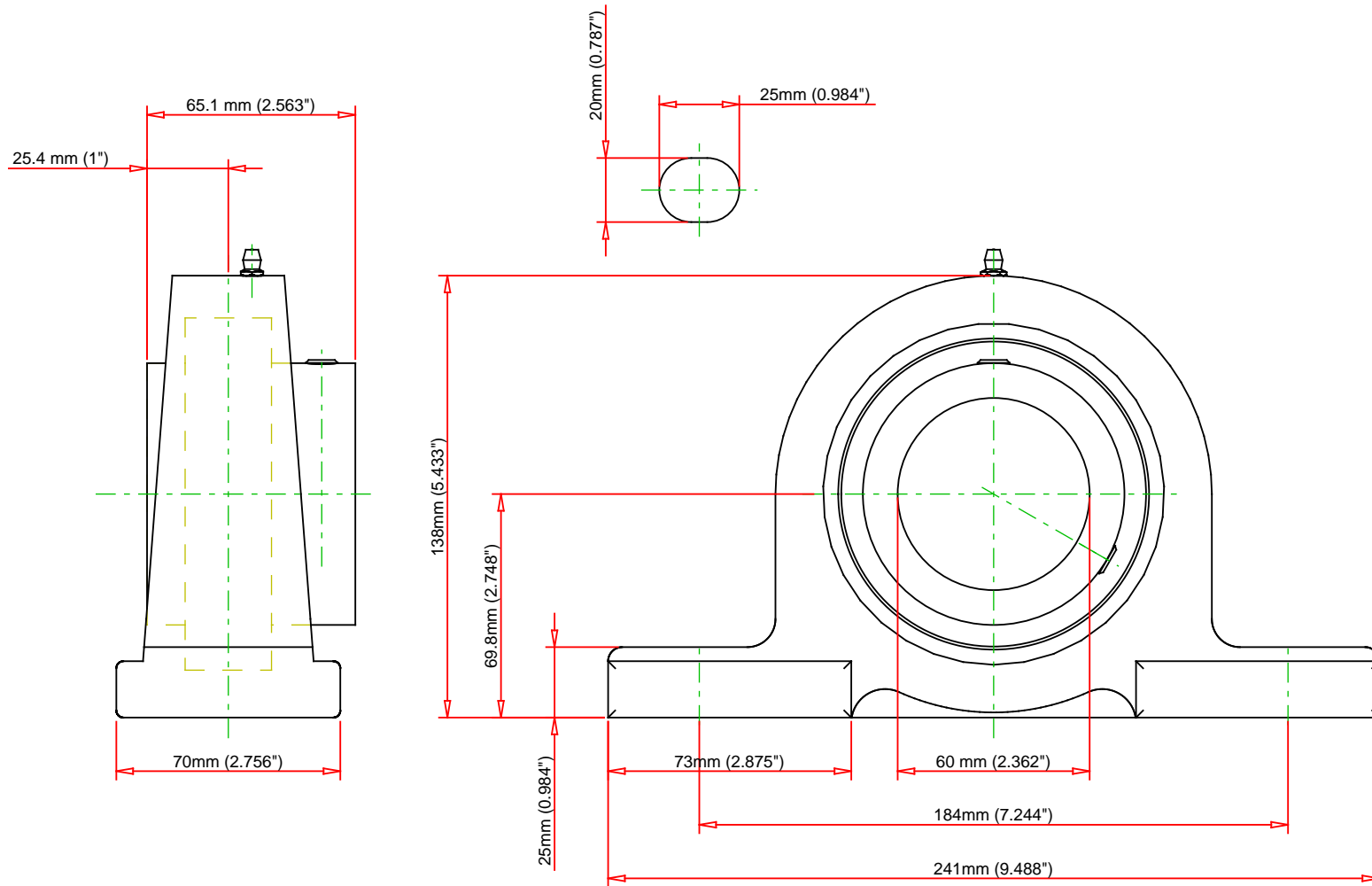
Base to Center Height H	69.80 mm 2.748 in
Total Length L	241.00 mm 9.488 in
Housing Width A	70.00 mm 2.756 in

2.750 in

Bolt Hole Spacing J184.00 mm
7.244 in**Bolt Hole Size N**20.00 mm
0.787 in**Bolt Hole Length N1**25.00 mm
0.984 in**Foot Height H1**

25.00 mm

Total Height H2138.00 mm
5.433 in**Dimension L1**73.00 mm
2.875 in**Inner Ring Width B**65.10 mm
2.563 in**Center of Bearing from End S**25.4 mm
1.000 in**Basic Load Ratings****Static Load Rating**8138 lbf
36200 N**Dynamic Load Rating**11780 lbf
52400 N



Bearing Number	UC212			
Load Ratings - C _r	11780	lbf	52400	N
Load Ratings - C _{0r}	8138	lbf	36200	N
Weight	10.8	lb	4.9	kg
Bolt Size	M16			

TIMKEN

THE TIMKEN COMPANY
NORTH CANTON, OHIO USA

UCP212

UCP 200 Pillow Block Housing Units - Set
Screw Locking

Every reasonable effort has been made to ensure the accuracy of the information contained in this writing, but no liability is accepted for errors, omissions or for any other reason.

FOR DISCUSSION ONLY