

Check Valve with One-touch Fitting Series *AKH/AKB*

How to Order

Straight type

AKH **04** — 00

Male connector type

AKH **04** **A** — **01** **S**

Applicable tubing O.D.
Metric size Inch size

04	ø4	03	ø5/32
06	ø6	07	ø1/4
08	ø8	09	ø5/16
10	ø10	11	ø3/8
12	ø12	13	ø1/2

• With seal (Standard)

* M5 and 10-32 UNF types are not required.

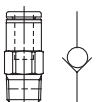
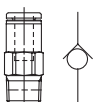
• Thread type

Nil	Metric thread (M5)
	Unified thread (10-32 UNF)
	R
N	NPT

• Port size

M5	M5 x 0.8
U10/32	10-32 UNF
01	1/8
02	1/4
03	3/8
04	1/2

Check valve free flow direction

A	From male thread to One-touch fitting	
B	From One-touch fitting to male thread	

Applicable Tubing O.D./Port Size Combinations

Metric size

Model	Applicable tubing O.D.	R thread				
		M5	1/8	1/4	3/8	1/2
AKH04 □	ø4	●	●			
AKH06 □	ø6	●	●	●		
AKH08 □	ø8		●	●	●	
AKH10 □	ø10			●	●	●
AKH12 □	ø12				●	●

Inch size

Model	Applicable tubing O.D.	NPT thread				
		10-32 UNF	1/8	1/4	3/8	1/2
AKH03 □	ø5/32	●	●			
AKH07 □	ø1/4	●	●	●		
AKH09 □	ø5/16		●	●	●	
AKH11 □	ø3/8			●	●	●
AKH13 □	ø1/2				●	●

Bushing type

AKB **01** **A** — **01** **S**

Body size

01	1/8
02	1/4
03	3/8
04	1/2

• With seal (Standard)

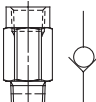
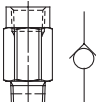
• Port size

01	1/8
02	1/4
03	3/8
04	1/2

• Thread type

Nil	R
N	NPT

Check valve free flow direction

A	From male to female thread	
B	From female to male thread	

Female/Male Threads Combinations

R thread

Model	Female thread Rc	Male thread R				
		1/8	1/4	3/8	1/2	
AKB01 □	1/8	●				
AKB02 □	1/4		●			
AKB03 □	3/8			●		
AKB04 □	1/2				●	

NPT thread

Model	Female thread NPT	Male thread NPT				
		1/8	1/4	3/8	1/2	
AKB01 □	1/8	●				
AKB02 □	1/4		●			
AKB03 □	3/8			●		
AKB04 □	1/2				●	



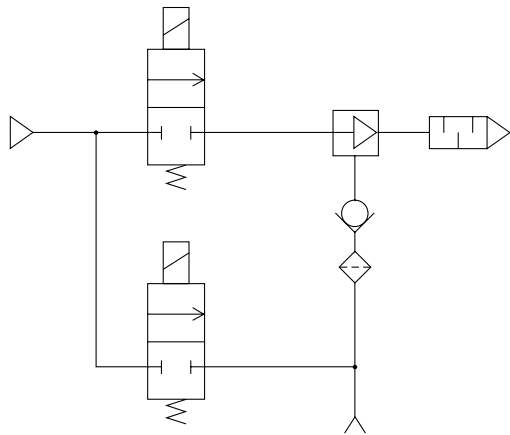
Specifications

Fluid	Air
Proof pressure	1.5 MPa
Operating pressure range	-100 kPa to 1 MPa
Cracking pressure	0.005 MPa
Ambient temperature and operating fluid temperature	-5 to 60°C (No freezing)
Applicable tubing material ^{Note)}	Nylon, Soft nylon, Polyurethane

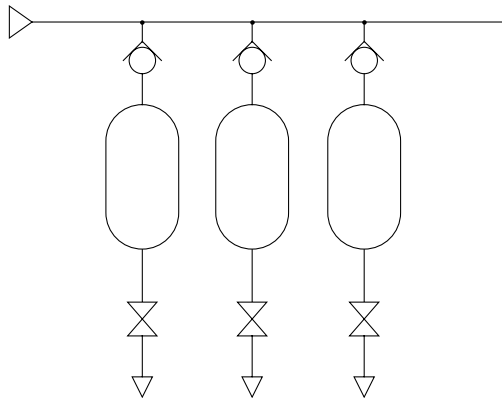
Note) Use caution regarding the max. operating pressure when soft nylon or polyurethane tubing is used.
(Refer to pages 15-6-3 to 15-6-5 for details.)

Application Example for Check Valve with One-touch Fitting

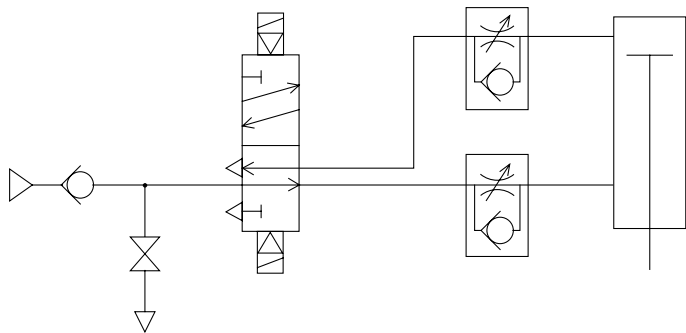
Prevention of reverse flow to vacuum source *
(Simple vacuum holding)



Tank pressure reverse flow prevention



Drop prevention *



* A certain amount of leakage is allowed in the specifications of this product.
Please note that it is not suitable for holding over an extended period of time.

⚠ Caution

Be sure to read before handling. Refer to pages 15-18-3 to 15-18-4 for Safety Instructions and Common Precautions on the products mentioned in this catalog, and refer to pages 15-8-6 to 15-8-8 for Precautions on every series.

- AS
- ASP
- ASN
- AQ
- ASV
- AK**
- ASS
- ASR
- ASF