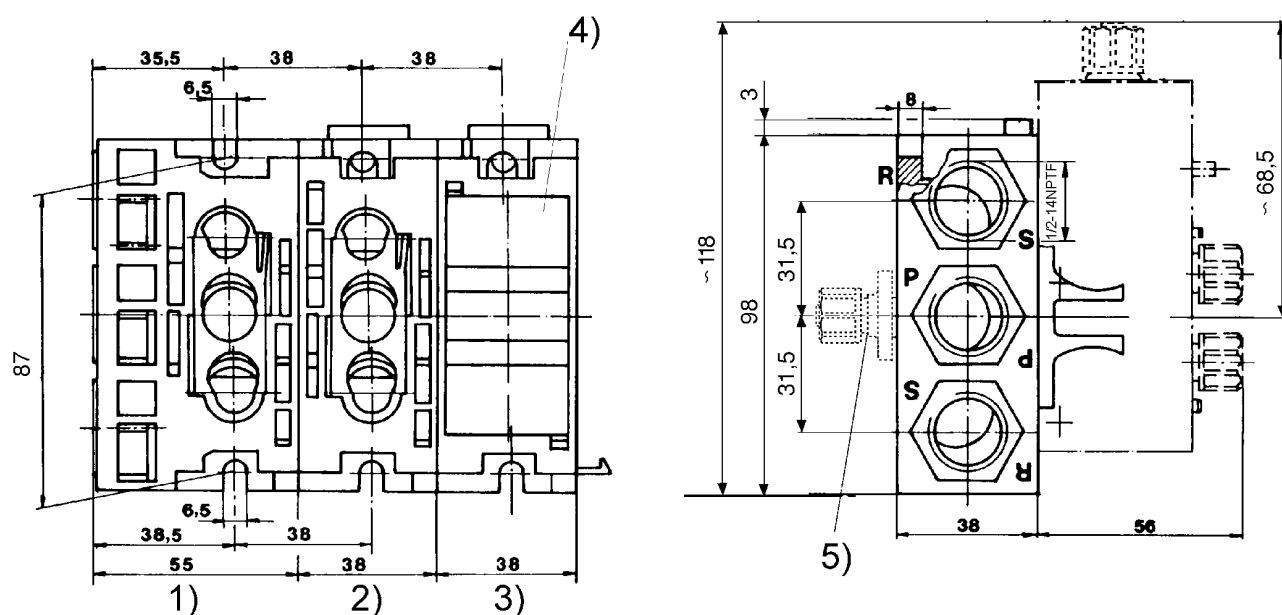


## Directional valves ► Electrically operated

### Series 740 Accessories

Type	Working pressure min./max.	Weight [kg]	Part No.
End plate	0 / 10	0.092	<b>8985003912</b>
Dummy flange for reserve places complete with seals	0 / 10	0.033	<b>5727406012</b>
Adapter for separate air supply	-	0.008	<b>8939102500</b>
Sealing kit: 10 O-rings, connection "R" and "S", 5 O-rings, connection "P" Ø 8 mm, 5 O-rings, connection "P" Ø 10 mm	0 / 10	0.009	<b>5727400092</b>

### Dimensions



Tightening torque for all screws max. 35 Nm

- 1) Inlet plate
- 2) Through plate
- 3) End plate
- 4) Dummy flange
- 5) Adapter for separate air supply

D898\_397\_NPTF

### Adapter for contact bridges



P894\_605

- 1) contact as per DIN EN 175301-803, form A
- 2) contact as per DIN EN 175301-803, form C