

## 40301035. - cubio cupboard

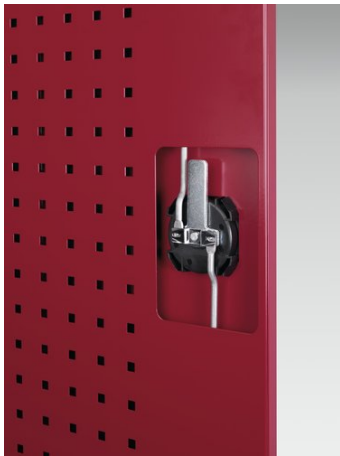
### Short Description

cubio cupboard louvre doors, 4x sliding louvre panels

WxDxH: 1050x650x2000mm

### Product Images





## Additional Information

|                         |  |
|-------------------------|--|
| Description             | cubio panel cupboard. Featuring a heavy duty, reinforced steel housing with up to 1 tonne total capacity with double, louvre panel lined, reinforced doors with 4x sliding vertical louvre panels. Finished in durable powder coat paint. WxDxH: 1050x650x2000mm |
| Width                   | 1050   |
| Depth                   | 650  |
| Height                  | 2000   |
| Customs tariff number   | 94032080   |
| Product material        | Sheet steel  |
| Product surface         | Powder coated  |
| Door type               | Louvre   |
| Door height 1           | 1900 mm  |
| Number of louvre panels | 4  |

## Product Options

|         |                 |
|---------|-----------------|
| Colour: | Anthracite grey |
|         | Crimson red     |
|         | Gentian blue    |
|         | Light grey      |