



**The Timken Company**

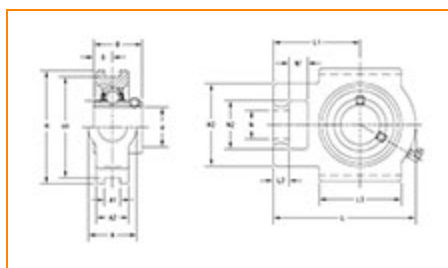
4500 Mt Pleasant St. NW

N. Canton, OH 44720

**Phone:** (234) 262-3000

**E-Mail:** [CustomerCAD@timken.com](mailto:CustomerCAD@timken.com) • **Web site:** [www.timken.com](http://www.timken.com)

## Part Number UCT216, UCT 200 Take-Up Mounted Bearings - Set Screw Locking



[Specifications](#) | [Dimensions](#) | [Basic Load Ratings](#)

### Specifications

<b>Bearing Number</b>	UC216
<b>Shaft Size d</b>	80 mm
<b>UPC Code</b>	087796141117
<b>Locking Style</b>	Set Screw Locking
<b>Housing Construction</b>	Take-Up

### Dimensions

<b>Housing Width A</b>	70 mm 2.75 in
------------------------	------------------



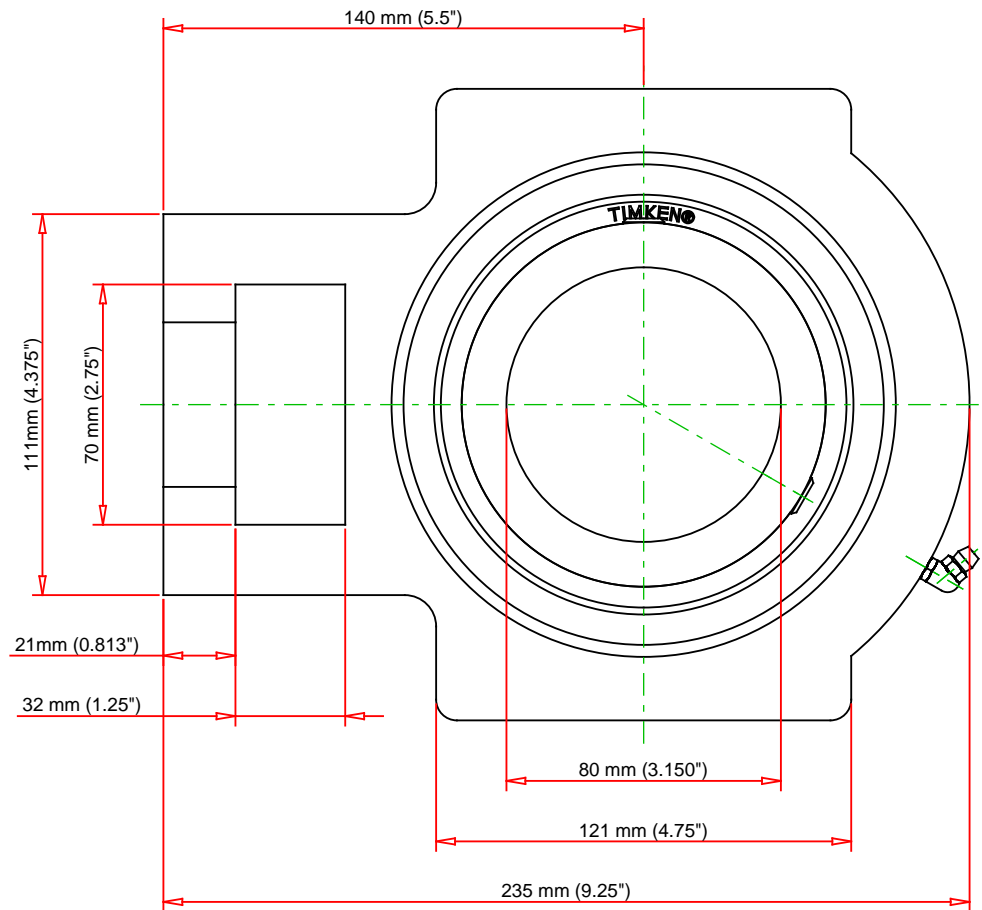
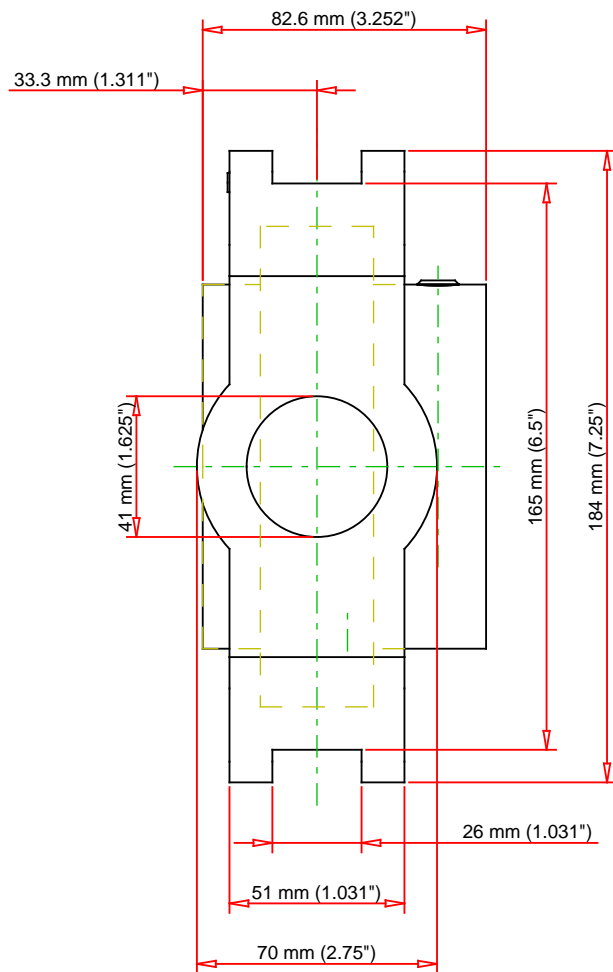
<b>Slot Width A1</b>	26 mm 1.031 in
<b>Socket Width A2</b>	51 mm 1.031 in
<b>Total Height H</b>	184 mm 7.25 in
<b>Pitch Height H1</b>	165 mm
<b>Height H2</b>	111 mm
<b>Total Length L</b>	235 mm 9.25 in
<b>Shaft Length L1</b>	140 mm 5.5 in
<b>Dimension L2</b>	21 mm
<b>Slot Length L3</b>	121 mm 4.75 in
<b>Adjustment Screw Bore N</b>	41 mm 1.625 in
<b>Opening Width N1</b>	32 mm 1.25 in
<b>Opening Height N2</b>	70 mm 2.75 in
<b>Inner Ring Width B</b>	82.6 mm 3.2520 in
<b>Center of Bearing from End S</b>	33.3 mm 1.311 in
<b>Grease Nipple Size</b>	A-R1/8

## Basic Load Ratings



<b>Static Load Rating</b>	53000 N 11915 lbf
---------------------------	----------------------

<b>Dynamic Load Rating</b>	72700 N 16344 lbf
----------------------------	----------------------



Bearing Number	UC216			
Load Ratings - C <sub>r</sub>	16344	lbf	72700	N
Load Ratings - C <sub>0r</sub>	11915	lbf	53000	N
Weight	18.1	lb	8.2	kg

**TIMKEN®**

THE TIMKEN COMPANY  
NORTH CANTON, OHIO USA

**UCT216**  
UCT 200 Take-Up Mounted Bearings - Set  
Screw Locking

Every reasonable effort has been made to ensure the accuracy of the information contained in this writing, but no liability is accepted for errors, omissions or for any other reason.

**FOR DISCUSSION ONLY**