



The Timken Company

4500 Mt Pleasant St. NW

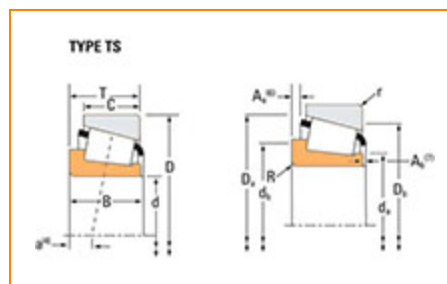
N. Canton, OH 44720

Phone: (234) 262-3000

E-Mail: CustomerCAD@timken.com • **Web site:** www.timken.com

Part Number 49580, Tapered Roller Bearings - Single Cones - Imperial

This is the most basic and most widely used type of tapered roller bearing. It consists of two main separable parts: the cone (inner ring) assembly and the cup (outer ring). It is typically mounted in opposing pairs on a shaft.



[Specifications](#) | [Dimensions](#) | [Abutment and Fillet Dimensions](#) | [Basic Load Ratings](#) | [Factors](#)

Specifications

Series	49500
Cone Part Number	49580
Design Units	Imperial
Cage Type	Stamped Steel
C1 - Dynamic Radial Rating (Two-Row, 1 million revolutions)¹	52000 lbf 231000 N
C90(2) - Dynamic Radial Rating (Two-Row, 90 million revolutions)²	13500 lbf 59900 N



Dimensions

d - Cone Bore	1 7/8 in 47.625 mm
----------------------	-----------------------

B - Cone Width	1.2500 in 31.750 mm
-----------------------	------------------------

Abutment and Fillet Dimensions

R - Cone Backface "To Clear" Radius³	0.140 in 3.6 mm
--	--------------------

da - Cone Frontface Backing Diameter	2.2 in 56 mm
---	-----------------

db - Cone Backface Backing Diameter	2.48 in 63 mm
--	------------------

Ab - Cage-Cone Frontface Clearance	0.09 in 2.3 mm
---	-------------------

Aa - Cage-Cone Backface Clearance	0.07 in 1.8 mm
--	-------------------

a - Effective Center Location⁴	-0.28 in -7.1 mm
--	---------------------

Basic Load Ratings

C90 - Dynamic Radial Rating (90 million revolutions)⁵	7740 lbf 34400 N
---	---------------------

C1 - Dynamic Radial Rating (1 million revolutions)⁶	29800 lbf 133000 N
---	-----------------------

C0 - Static Radial Rating	35000 lbf 155000 N
----------------------------------	-----------------------

C_{a90} - Dynamic Thrust Rating (90 million revolutions)⁷	5310 lbf 23600 N
---	---------------------

Factors

K - Factor⁸

1.46

Cg - Geometry Factor⁹

0.0946

¹ Based on 1×10^6 revolutions L_{10} life, for the ISO life calculation method.

² Based on 90×10^6 revolutions L_{10} life, for The Timken Company life calculation method. C_{90} and C_{a90} are radial and thrust values for a single-row, $C_{90(2)}$ is the two-row radial value.

³ These maximum fillet radii will be cleared by the bearing corners.

⁴ Negative value indicates effective center inside cone backface.

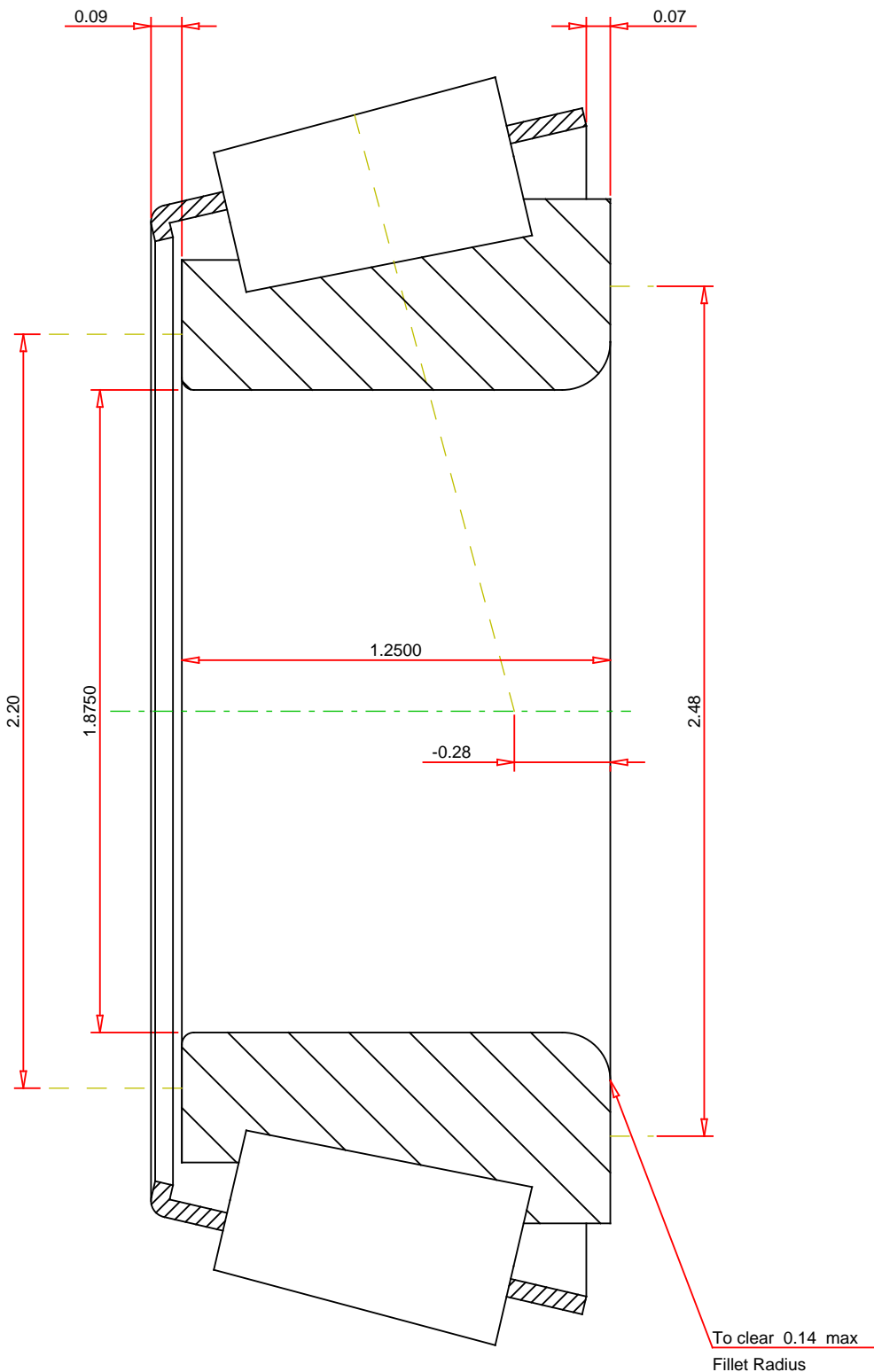
⁵ Based on 90×10^6 revolutions L_{10} life, for The Timken Company life calculation method. C_{90} and C_{a90} are radial and thrust values.

⁶ Based on 1×10^6 revolutions L_{10} life, for the ISO life calculation method.

⁷ Based on 90×10^6 revolutions L_{10} life, for The Timken Company life calculation method. C_{90} and C_{a90} are radial and thrust values for a single-row, $C_{90(2)}$ is the two-row radial value.

⁸ These factors apply for both inch and metric calculations. Consult your Timken representative for instruction on use.

⁹ Geometry constant for Lubrication Life Adjustment Factor a_3 .



IMPERIAL UNITS

<div>Number of Rollers Per Row16</div>	<div><div>TIMKEN®</div><div>THE TIMKEN COMPANY</div><div>NORTH CANTON, OHIO USA</div></div>	<div><div>49580</div><div>Tapered Roller Bearings - Single Cones - Imperial</div></div> <div><div><div>K Factor</div><div>Dynamic Radial Rating - C90</div><div>Dynamic Thrust Rating - Ca90</div><div>Dynamic Radial Rating - C1</div></div><div><div>1.46</div><div>7740</div><div>5310</div><div>29800</div></div><div><div>lbf</div><div>lbf</div><div>lbf</div><div>lbf</div></div></div>
--	---	--